

Goodhue County Land Use Management

Goodhue County Government Center | 509 West Fifth Street | Red Wing, Minnesota 55066

Lisa M. Hanni, L.S. Director



County Surveyor / Recorder

Building | Planning | Zoning
Telephone: 651.385.3104
Fax: 651.385.3106

Environmental Health | Land Surveying | GIS
Telephone: 651.385.3223
Fax: 651.385.3098

NOTICE OF PUBLIC HEARING

**GOODHUE COUNTY
Board of Adjustment
Monday, June 26, 2017
5:30 PM**

**Goodhue County Government Center- Board Room
509 West Fifth Street
Red Wing, MN 55066**

BOARD OF ADJUSTMENT

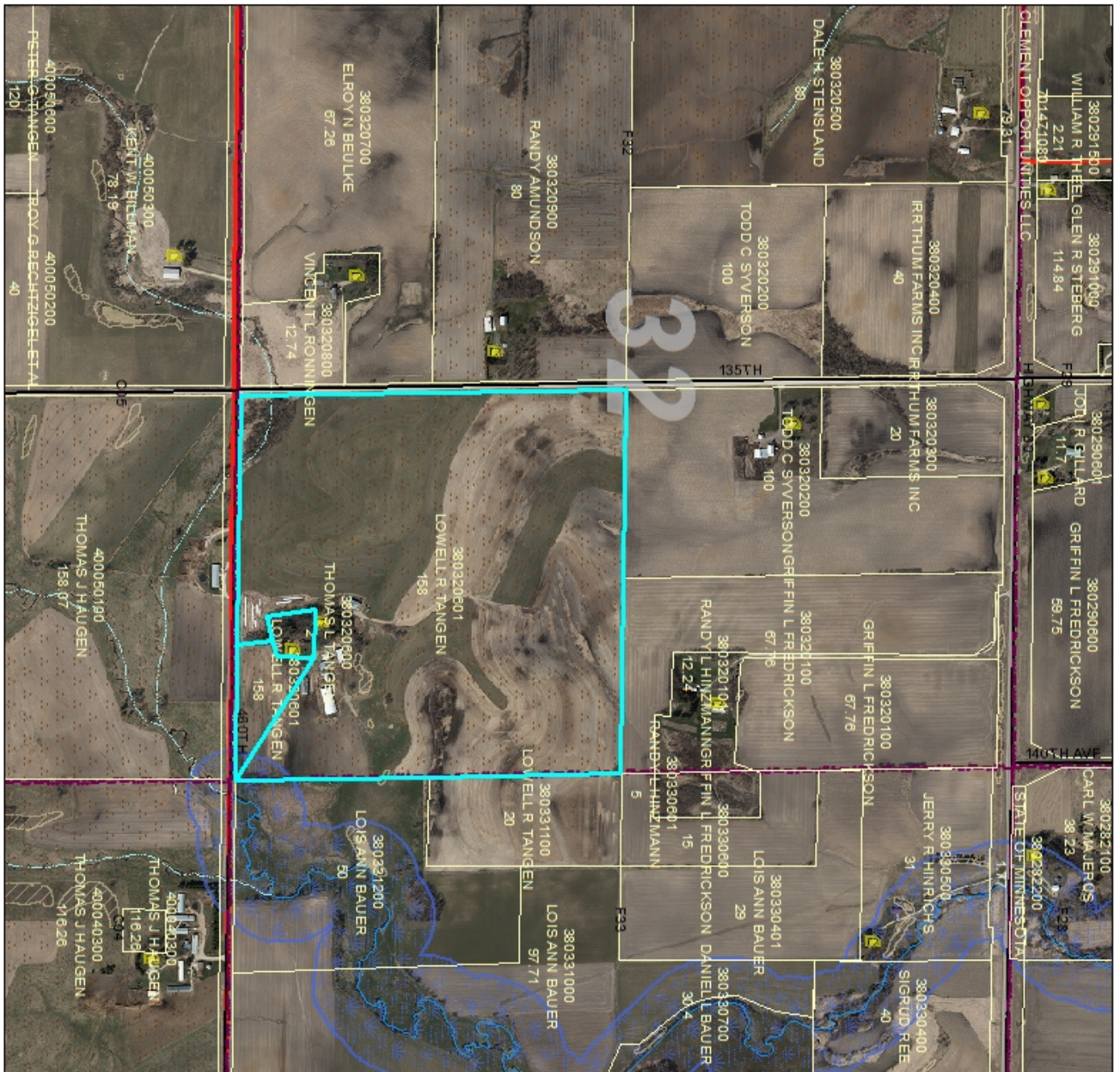
5:30 pm Call Meeting to Order

1. Approval of the agenda
2. Approval of previous month's meeting minutes
3. Conflict/Disclosure of interest
4. Public Hearings:

PUBLIC HEARING: Lowell Tangen -13835 460th Street Wanamingo, MN 55983 A1 zoned district, Parcel 38.032.0601 SE ¼ of Sec 32 Twp 110 Range 16 in Minneola Township . Request for a Request for a Variance to Article 13 Confined Feedlot Regulations, required 1000 foot setback, for an existing feedlot to expand.

5. STAFF UPDATES
6. OTHER-DISCUSSION
7. Adjourn

Anyone interested is invited to attend. Agenda items may be subject to change. Please contact Land Use Management at (651)385-3104, or visit us on the web at www.co.goodhue.mn.us for the most current agenda.



PUBLIC HEARING: Lowell Tangen -
 13835 460th Street Wamamingo,
 MN 55983

Parcel 38: 032.0601
 the SE ¼ Sec 32 Twp 110 Range 16 in
 Minneola Township.
 Request for a conditional use permit (CUP)
 for an existing 260.5 Animal Unit (AU) Dairy Feedlot
 to expand to 1,499,553 gallons of
 animal waste liquid storage.

Legend

- Parcel
- Water
- 135th St
- 140th St
- 145th St
- 150th St
- 155th St
- 160th St
- 165th St
- 170th St
- 175th St
- 180th St
- 185th St
- 190th St
- 195th St
- 200th St
- 205th St
- 210th St
- 215th St
- 220th St
- 225th St
- 230th St
- 235th St
- 240th St
- 245th St
- 250th St
- 255th St
- 260th St
- 265th St
- 270th St
- 275th St
- 280th St
- 285th St
- 290th St
- 295th St
- 300th St
- 305th St
- 310th St
- 315th St
- 320th St
- 325th St
- 330th St
- 335th St
- 340th St
- 345th St
- 350th St
- 355th St
- 360th St
- 365th St
- 370th St
- 375th St
- 380th St
- 385th St
- 390th St
- 395th St
- 400th St
- 405th St
- 410th St
- 415th St
- 420th St
- 425th St
- 430th St
- 435th St
- 440th St
- 445th St
- 450th St
- 455th St
- 460th St
- 465th St
- 470th St
- 475th St
- 480th St
- 485th St
- 490th St
- 495th St
- 500th St
- 505th St
- 510th St
- 515th St
- 520th St
- 525th St
- 530th St
- 535th St
- 540th St
- 545th St
- 550th St
- 555th St
- 560th St
- 565th St
- 570th St
- 575th St
- 580th St
- 585th St
- 590th St
- 595th St
- 600th St
- 605th St
- 610th St
- 615th St
- 620th St
- 625th St
- 630th St
- 635th St
- 640th St
- 645th St
- 650th St
- 655th St
- 660th St
- 665th St
- 670th St
- 675th St
- 680th St
- 685th St
- 690th St
- 695th St
- 700th St
- 705th St
- 710th St
- 715th St
- 720th St
- 725th St
- 730th St
- 735th St
- 740th St
- 745th St
- 750th St
- 755th St
- 760th St
- 765th St
- 770th St
- 775th St
- 780th St
- 785th St
- 790th St
- 795th St
- 800th St
- 805th St
- 810th St
- 815th St
- 820th St
- 825th St
- 830th St
- 835th St
- 840th St
- 845th St
- 850th St
- 855th St
- 860th St
- 865th St
- 870th St
- 875th St
- 880th St
- 885th St
- 890th St
- 895th St
- 900th St
- 905th St
- 910th St
- 915th St
- 920th St
- 925th St
- 930th St
- 935th St
- 940th St
- 945th St
- 950th St
- 955th St
- 960th St
- 965th St
- 970th St
- 975th St
- 980th St
- 985th St
- 990th St
- 995th St
- 1000th St

0 250 500 1,000 1,500 2,000 Feet

DATA DISCLAIMER: Goodhue County assumes NO liability for the accuracy or completeness of this map OR responsibility for any associated direct, indirect, or consequential damages that may result from its use or misuse. Goodhue County Copyright 2016.

2016 Aerial Imagery
 Map Created 2017 Kaw Eynck