

# Goodhue County Commissioners & SWCD Supervisors - COW

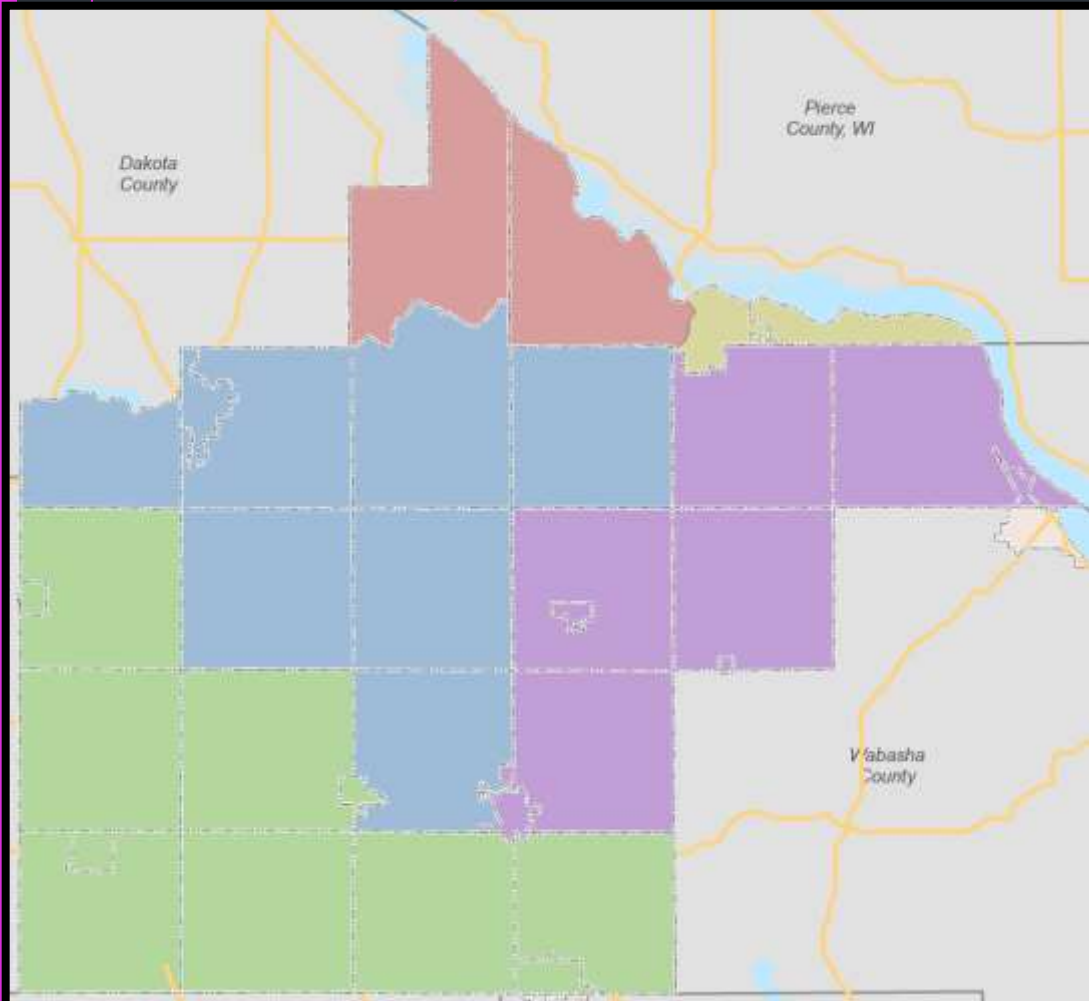
August 11<sup>th</sup> 2022 8am Zumbrota City Hall

## Agenda

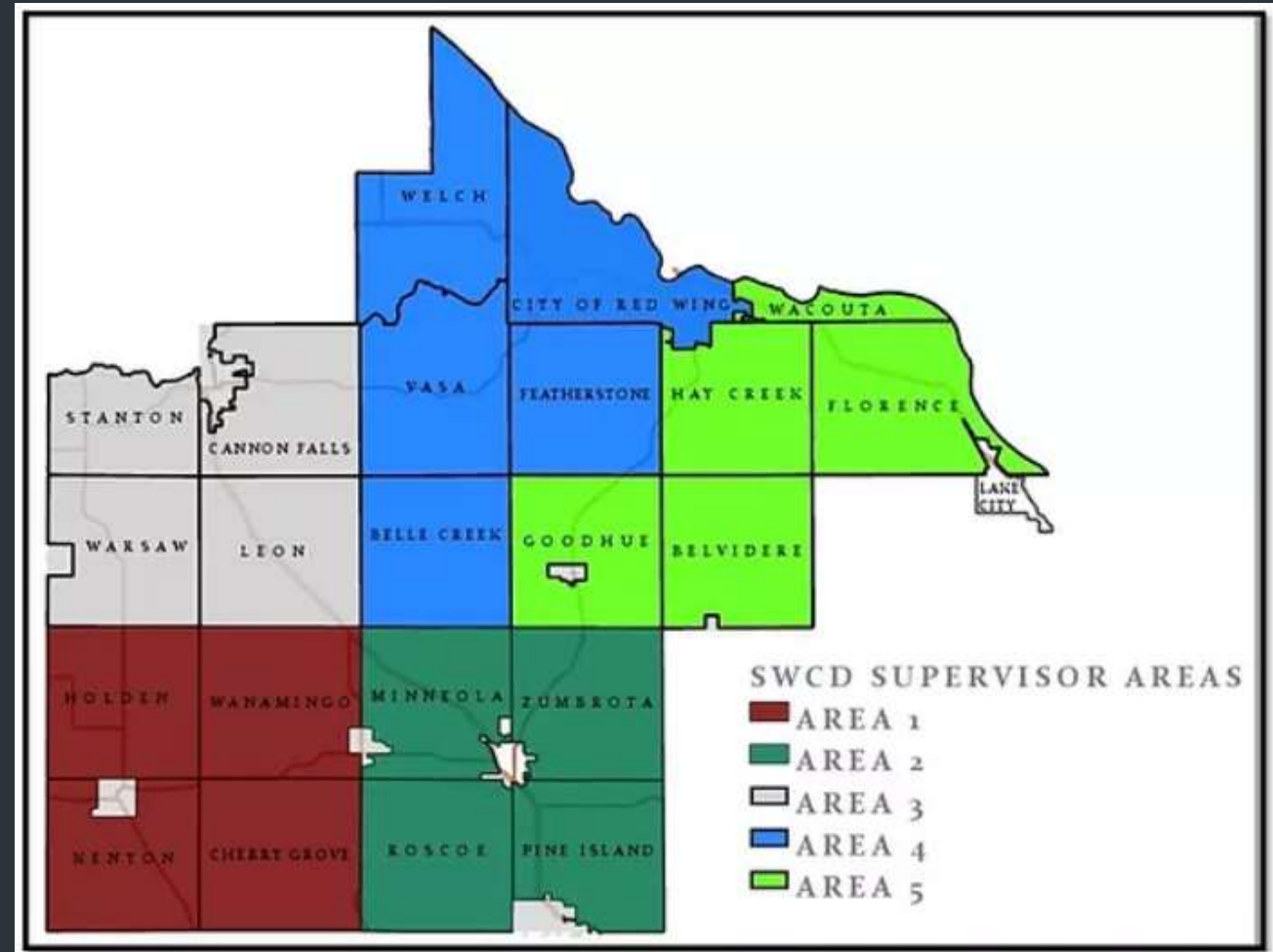
- Introductions
- Review of County/SWCD Cooperative Programs
- Status of Water Quality in Goodhue County
- Q/A

# Welcome and Introductions

Commissioner Districts



SWCD Supervisor Districts



## - County/SWCD Cooperative Programs

### County Feedlot Program

- County Delegated the MPCA Feedlot Program to the SWCD in ~2000
- Assist landowners with Minnesota's Feedlot Regulations and Nutrient Management Guidelines
- County Feedlot Ordinance and County Registrations (~1,000\*)

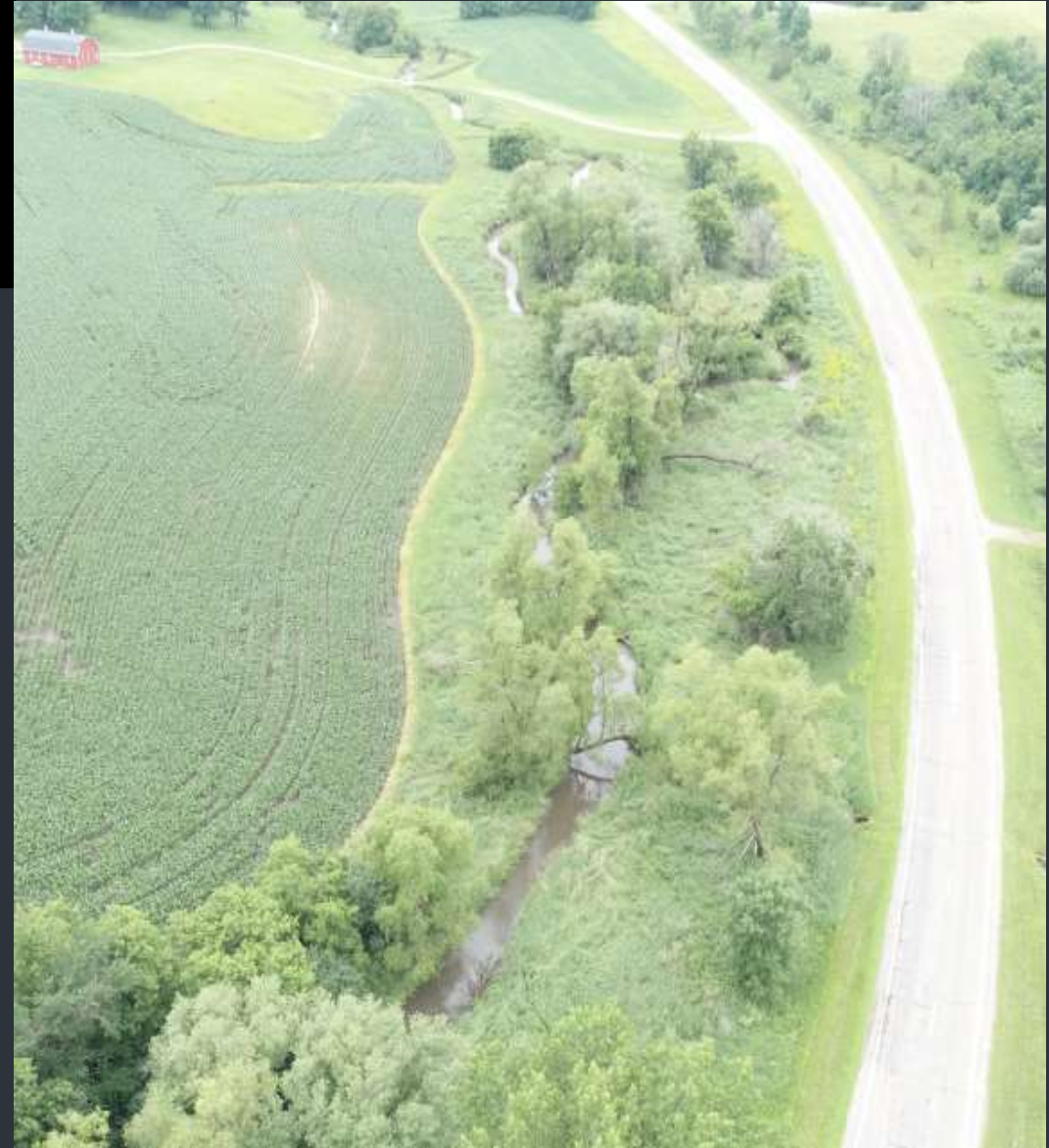




## - County/SWCD Cooperative Programs

### Stream Buffers

- SWCD Provides Technical Assistance to Landowners and Verify Compliance
- Goodhue County Land Use Enforces the Buffer Law
- Current Non-Compliant Parcels = 1
- 2022 Aerial Flight



## - County/SWCD Cooperative Programs

### Wetland Conservation Act

- County Delegated the Wetland Conservation Act to the SWCD in 1990s.
- Assist landowners with Minnesota's "No Net Loss" of Wetlands Rule

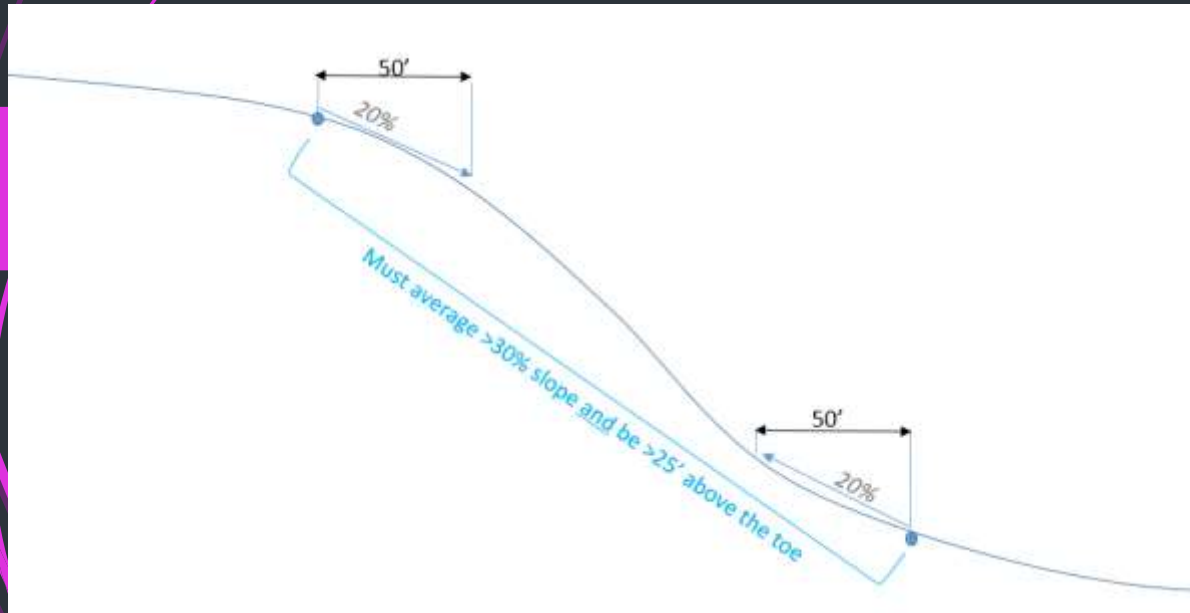




## - County/SWCD Cooperative Programs

Technical Assistance with the County Zoning Ordinance

- Seeding Recommendations
- Solar Project Reviews/Maintenance
- Erosion Control Review/Inspections
- Bluffland Inspections
- Building Permit Reviews, CUPs
- AIS Team



## - County/SWCD Cooperative Programs

### County Ditch

- Assist with Surveys and Inspections
- Local Contact for Ditch Questions
- Tile Installation nearly complete





## - Status of Water Quality in Goodhue Co.

MPCA is the State Agency Tasked with Monitoring our Streams/Lakes

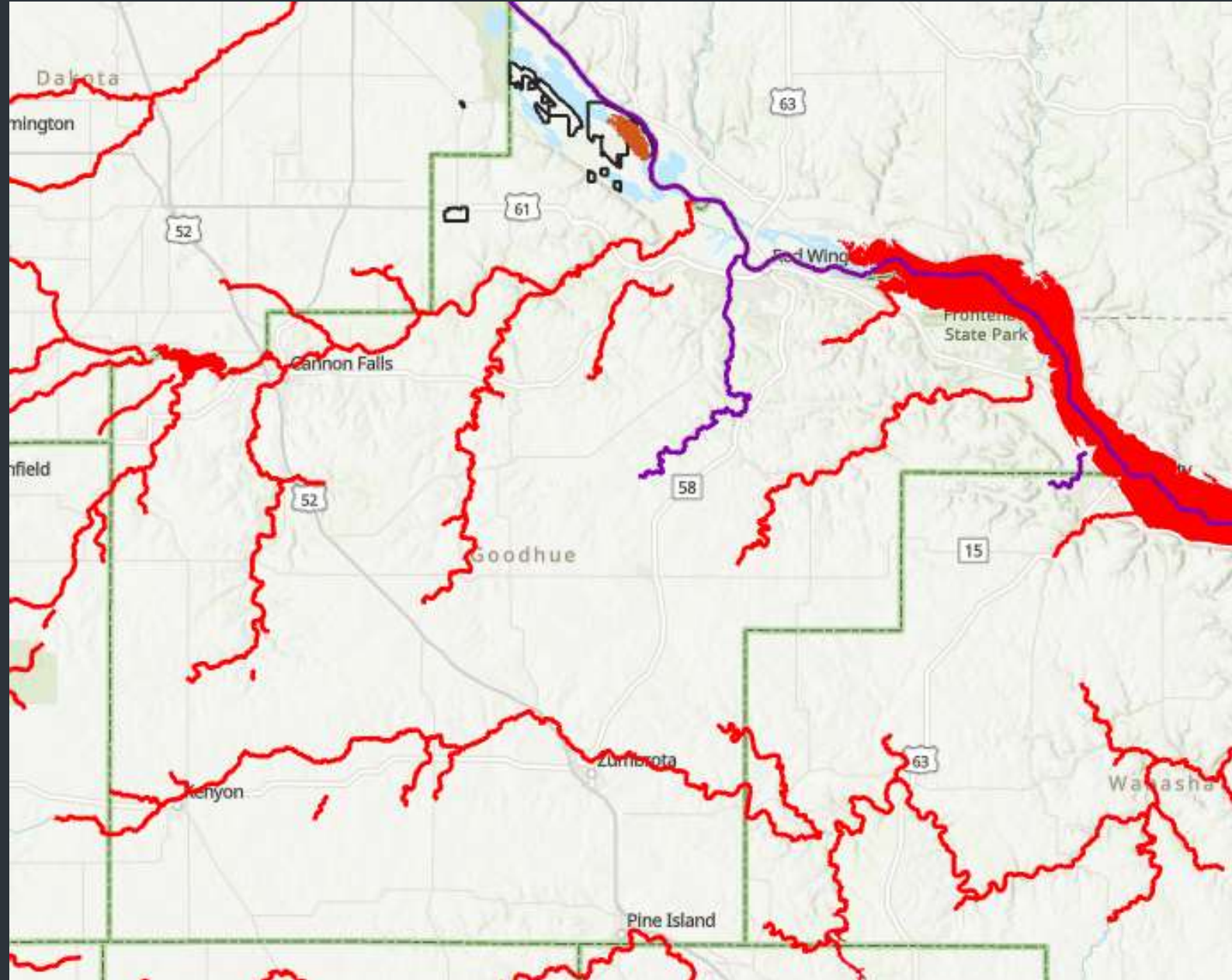
- 10 year cycle on testing
- Assess for 3 main uses
  - Aquatic Life
  - Aquatic Recreation
  - Drinking Water

Source from MPCA Impaired Waters List:

<https://www.pca.state.mn.us/water/impaired-waters-viewer-iwav>

And the MPCA Tableau site:

<https://public.tableau.com/app/profile/mpca.data.services/viz/WaterQualityAssessmentResultsDataViewer/HomePage>





# - Status of Water Quality in Goodhue Co.

## Turbidity Impairments - AQL

- N. Fork Zumbro
- Belle Creek
- Little Cannon
- Spring Creek
- Mississippi River
- Cannon River
- Butler Creek
- Wells Creek\*

## E.Coli Impairments - AQR

- N. Fork Zumbro
- Belle Creek
- Little Cannon
- Spring Creek
- Mississippi River
- Cannon River
- Butler Creek
- Wells Creek
- Hay Creek
- Bullard Creek

## Most Recent Monitoring

- Cannon River 2022-23
- Miss/Lake Pepin 2018-19
- Zumbro 2023-24

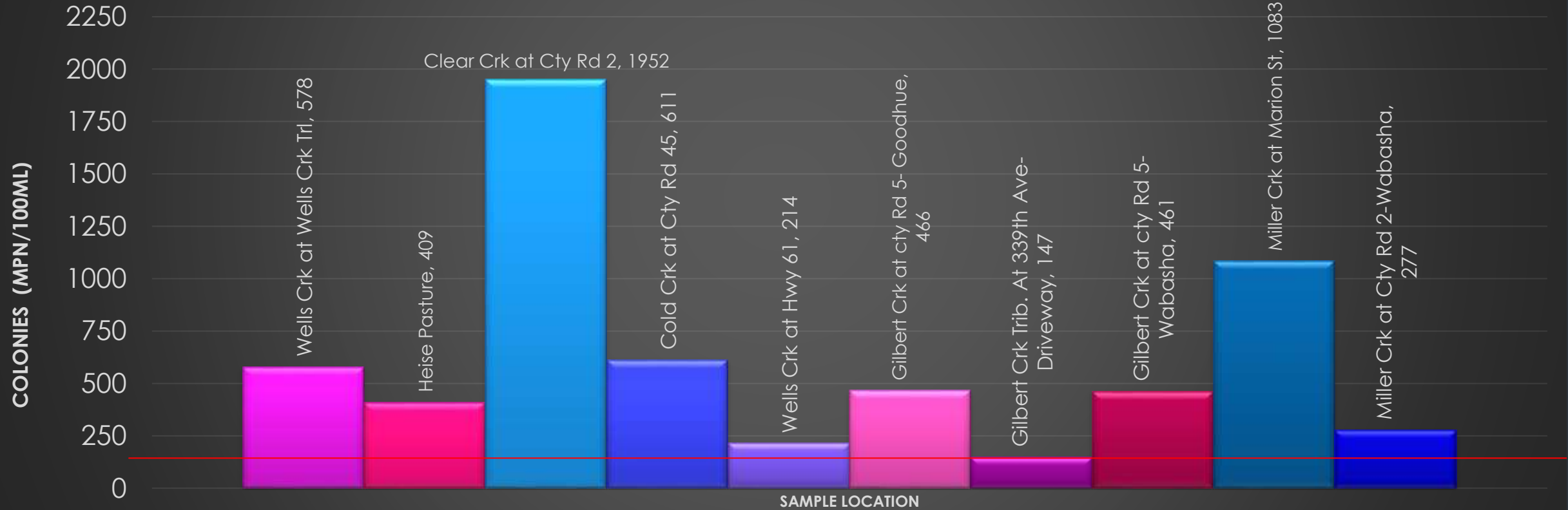
## Our Cold Water Streams

- Belle Creek
- Little Cannon
- Spring Creek
- Wells Creek
- Hay Creek
- Bullard Creek
- Trout Brook



# - Status of Water Quality in Goodhue Co.

Geometric Mean of E.coli Sampling efforts in Mississippi River/Lake Pepin Watershed 2012-2013 and 2018-2019  
(25 sample rounds, 126 MPN/100mL Standard)



DNA Analysis - Inconclusive



# - Other

Watershed Planning is now in Implementation Stages

- Zumbro and the Cannon River Watersheds
- Focus on Surface Water Runoff and Groundwater Quality
- Utilizing State Funds to Address the Plan(s) Priorities







Examples of other programs & initiatives that the citizens of Goodhue County utilize because of County support!  
Thank you again

Comments / Questions

