



Child and Family Unit Year End Report 2022

Katie Bystrom
Social Services Supervisor – Child & Family Unit

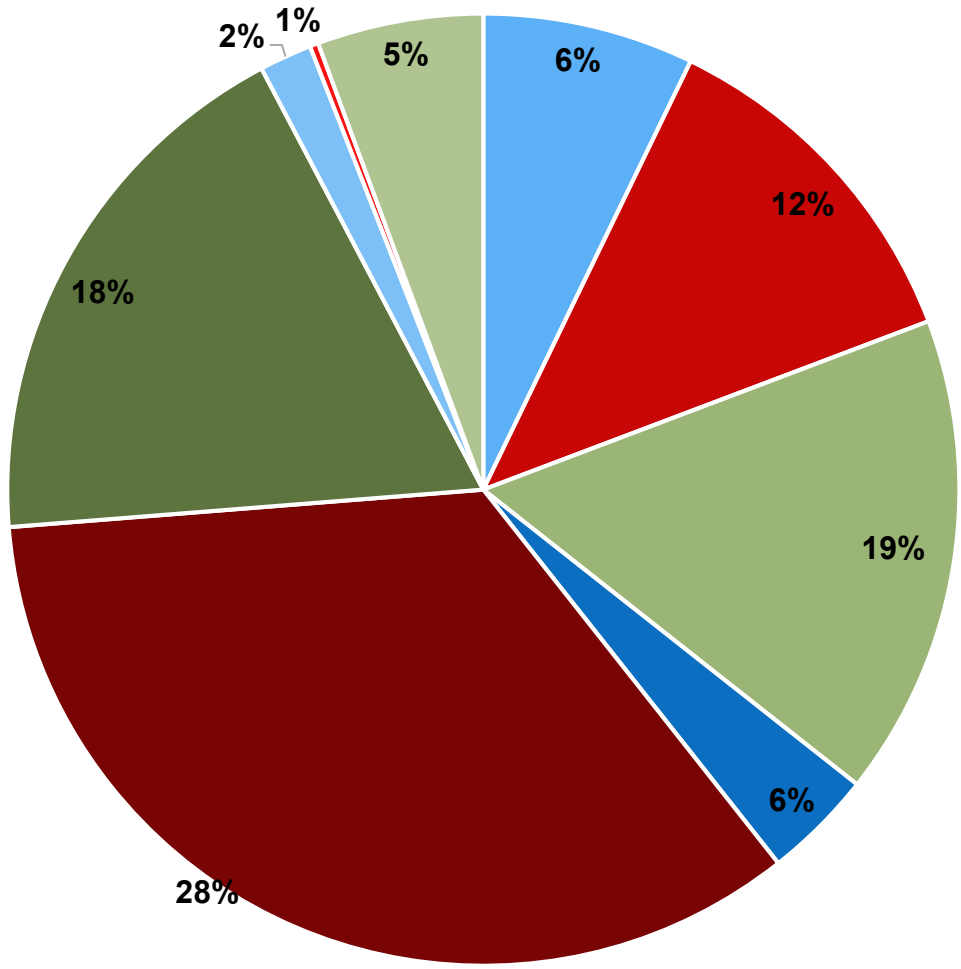


Intake Statistics 2022

Program	Total Number
Adoption/Licensing requests or complaints	59
Adult Mental Health	173
Adult Protective Services	291
Adult Services (General)	395
Chemical Dependency (report/service request)	90
Child Protective Services	829
Child Welfare	447
Children's Mental Health (report/service request)	43
Developmental Disabilities	7
Parent Support Outreach Program	136
TOTAL	2470

Intake Percentage 2022

*rounded to the nearest whole number



- Adult Mental Health
- Adult Protective Services
- Adult Services (General)
- Chemical Dependency (Report/Service Request)
- Child Protective Services
- Child Welfare
- Children's Mental Health (Report/Service Request)
- Developmental Disabilities
- Parent Support Outreach Program

Intake 2022

Intake is the first point of contact between the community and Goodhue County Social Services. Our agency values of Excellence, Collaboration, Respect, Safety, and Compassion are evident from this first point of contact.

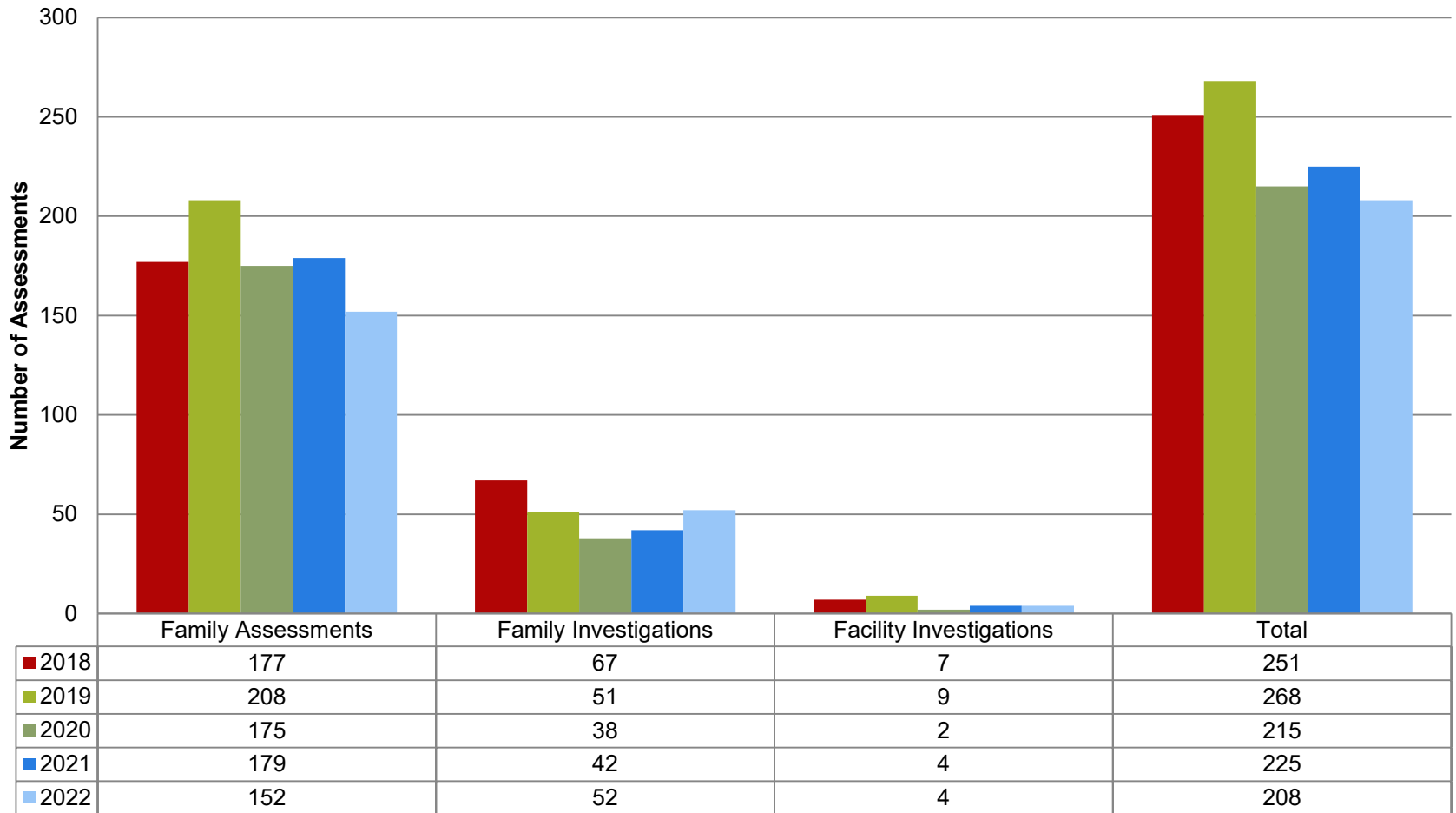
- Goodhue County Social Services received 17 fewer intakes in 2022 compared to 2021.
- Referrals for Adult Mental Health Services increased by 21 and Child Welfare and Parent Support Outreach increased by 11.
- Reports of child maltreatment increased by 120.
- Social Services Lead Workers handle the majority of the intake responsibilities, collecting information to allow the teams to determine eligibility for programs and make appropriate screening decisions.

Child Protection Screening

- Reports with allegations of maltreatment must be screened within 24 hours.
- Screening criteria is set by statute and guidance from the Department of Human Services.
- The child protection screening team meets a minimum of 30 minutes per day and twice on Friday to meet this standard.
- When a report of imminent harm is received, the screening team is convened immediately.
- Reports that are received after hours are screened by the on call worker and the on call supervisor.

Assessments/Investigations by Year

Child Protection Assessments/Investigations 2018-2022



Performance Measure

For all screened in child maltreatment reports closed during the year, what percentage of alleged victims were seen in face-to-face visits within the time limit specified by MN State Statute.

- Performance Standard: 100%
- Observed Performance: 89% (234 out of 263 children)
- Training and Turnover impacted this data point.
- Observed Performance for current employees: 95%

- Steps to improve:
 - When assignment is made, an email is sent to the assigned worker highlighting the required time to initial contact.
 - Increase oversight.
 - Training protocol for new staff provides increased shadowing requirements and documentation reviews.
 - Daily checks with assessment team about contact with new cases.

On Call Child Protection Worker

On Call Procedure

- Each child protection social worker has their own work cell phone that is used for on call. Dispatch has the master calendar of on call social workers, on call supervisors, and crisis foster care contacts.
- An email is sent each week to law enforcement chiefs, GCSO Investigation Captain, GCSO Dispatch, GCSO patrol, RWPD Investigation Sergeant, and RWPD patrol announcing the on call worker with their direct number. Information about special schedules- like holidays- are included in the email.
- New tracking forms were introduced and used this year.

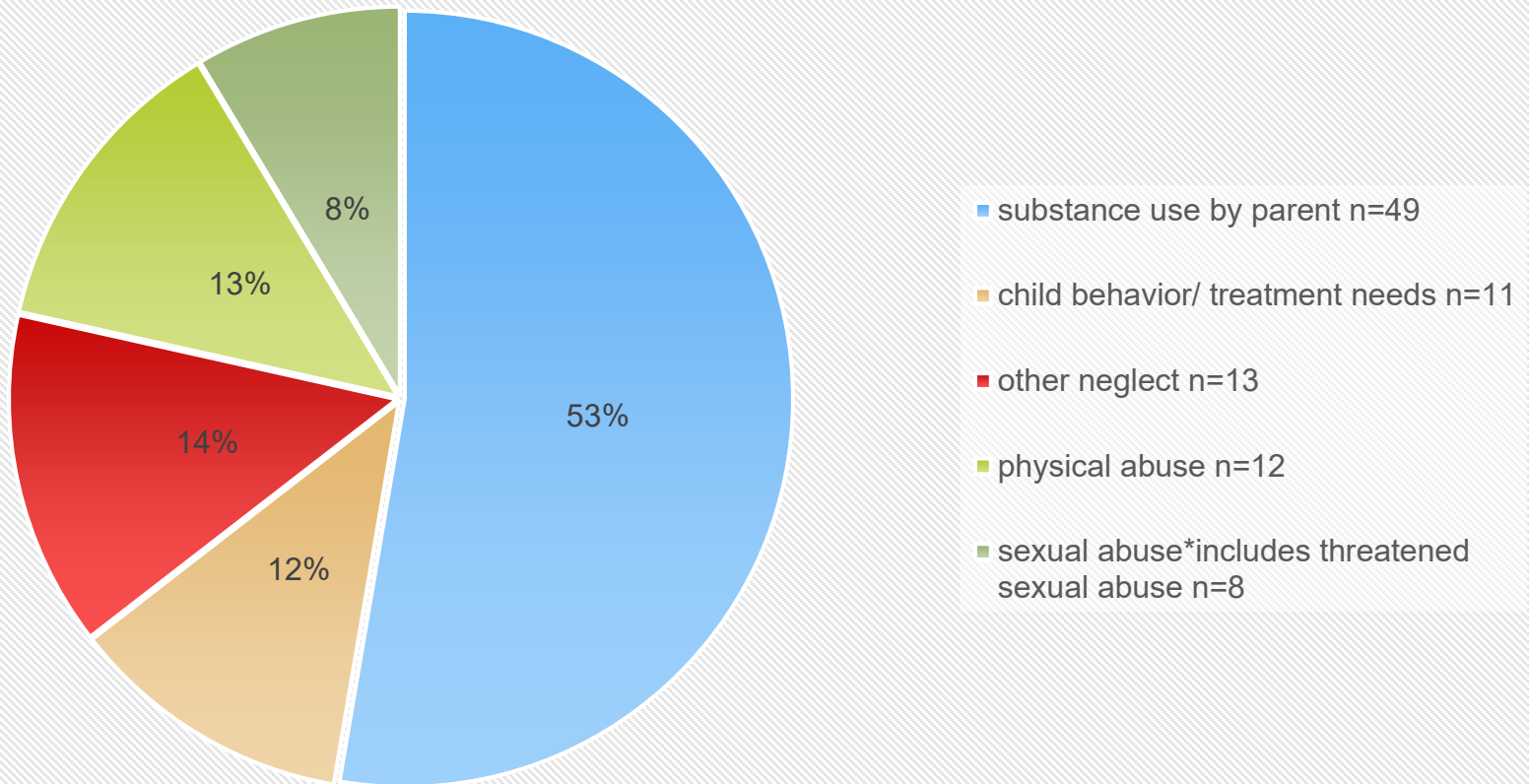
There were 85 total calls on the on-call phone in 2022.

- 21 were new child protection reports.
- 61 involved active child protection cases.
- 3 involved vulnerable adults, substance use, or adult mental health issues.
- Primary concerns were mental health crises, parent child conflict, and neglect concerns.

Children in Placement 2022

sorted by primary reason for initial placement

93 unduplicated children in placement



Performance Measures- Placement

All children in out of home care during the given period, a face to face contact is required between the social worker and child when the child is in care for the full month.

The performance standard is 95% or greater.

- In 2020, Goodhue County was at 85.9%.
- In 2021, Goodhue County was at 91.5%.
- **In 2022, Goodhue County achieved 96%!**
- The Goodhue County Child Protection Case Managers have been working diligently to meet this standard, sometimes being on the road for more than 10 hours in a day.
- Our case management team achieved this goal even though we had only five case managers for a portion of the year.

Performance Measure

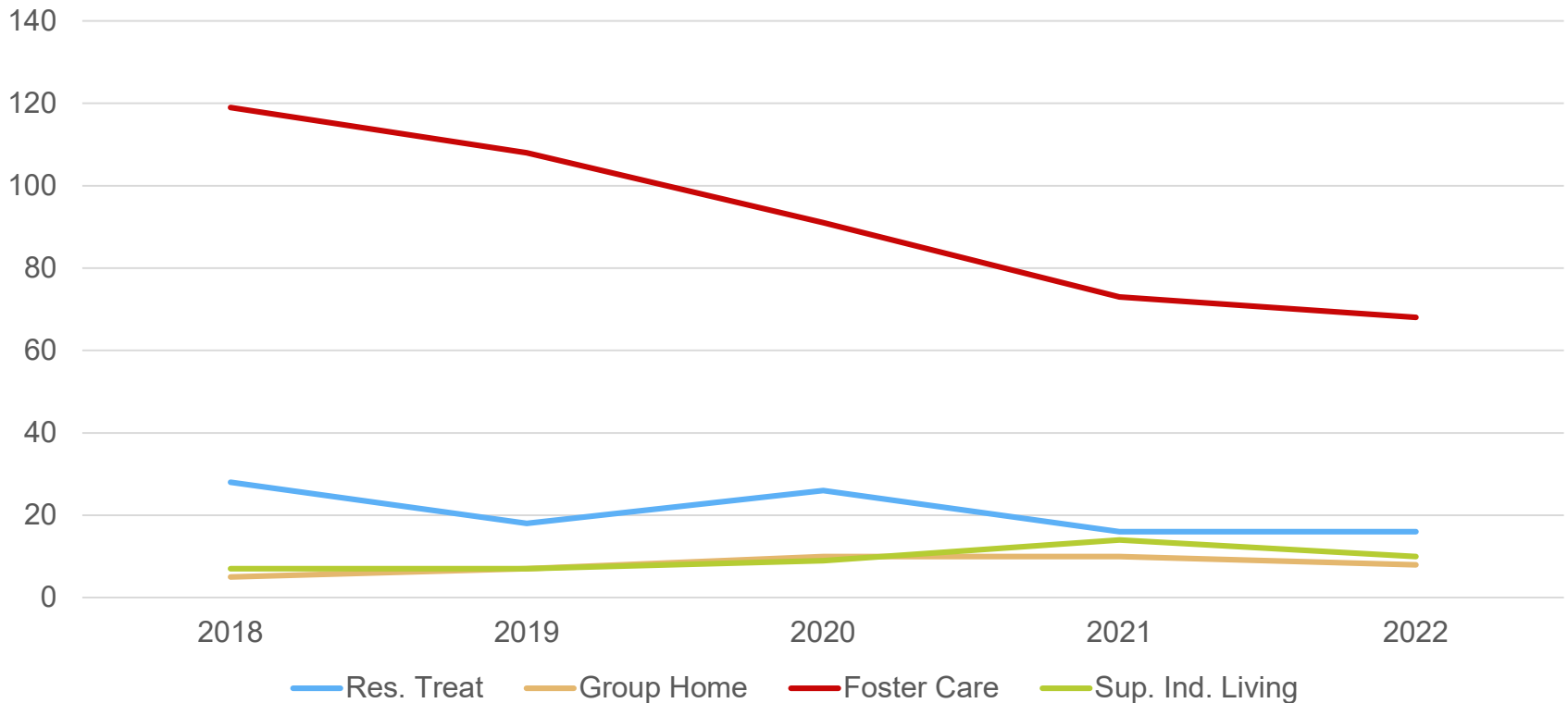
The percentage of all days that children were in a family foster care setting that were spent with a relative during a given period

- Performance Standard: 35.7%
- Goodhue County: **42.7%**

- MN Statute requires that relatives are not only given consideration for placement, but that the agency will work to assist relatives and kin to become eligible, licensed placement options.
- Kinship placement allows a child to be placed with a relative or family friend to sustain cultural traditions and support family connections.
- Kinship placements require more support due to education and training required for foster care licensure as a family is facing a crisis.
- Eleven children and youth were in kinship placements in 2022.

Children in Placement by setting 2018-2022

Duplicated count--1 child may have several placements



Successful Transition to Adulthood for Youth (STAY)

- Extended Foster Care or Supervised Independent Living allow youth who turn 18 while they are in foster care to continue to receive support from Goodhue County Health and Human Services until they turn 21.
- Ten youth are receiving this support in areas like job search, education planning, budgeting, housing, and mental health.
- Some youth choose to remain in their foster care setting.
- Some youth choose to set up an independent living plan that is supervised by their case manager.
- Goodhue County Social Services works with Rise Up Red Wing to provide independent living skills training for this population.
- When youth are discharged from services, they often have high school diplomas or equivalency (GED), full time jobs, stable housing, and savings.

Permanency Outcomes in 2022

Permanency Outcome	Percentage of Children in Placement During 2022 *rounded to the nearest whole number
Reunification with primary parent n= 16	17%*
Adoption n= 8	9%*
Transfer of Legal Custody to agency or relative n= 5	5%*
Working toward permanency as of 12/31/22 -Trial Home Visit Status n=2 -Pre-adoptive n=5	8%*

Performance Measure- Permanency

- MN Department of Human Services measures the amount of time that is required to achieve permanency for children in out of home placement.
- Performance Standards
 - Permanency achieved within 12 months: 40.5% **GC= 42.4%**
 - Permanency achieved 12-23 months: 43.6% **GC= 72.2%**
 - Permanency achieved within 24 months: 30.3% **GC= 33.3%**

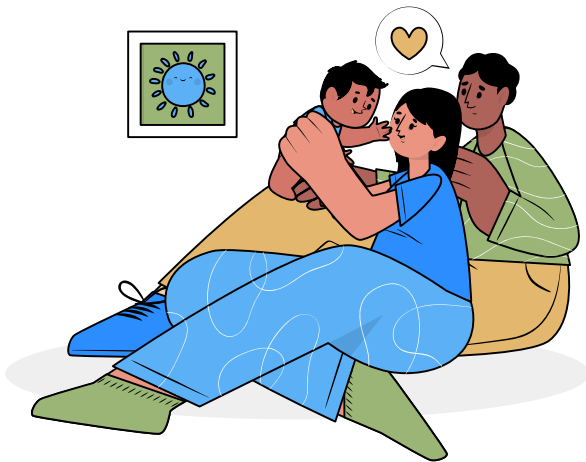
Family First Prevention Services Act FFPSA

- We have completed our first full year of implementation using Qualified Residential Treatment Placements (QRTP).
- Parents are participating in the Juvenile Placement Screening Team, advocating for their family's needs.
- We are working with courts to ensure the appropriate reviews and judicial findings are made within the required timelines.
- Challenges have included educating our therapeutic providers about the requirements for QRTP, ensuring that community resources have been utilized, and working with the facilities to ensure that adequate support is available to the child and family at discharge.

FFPSA- Prevention Services

- In 2021, Goodhue County Health and Human Services identified a lack of parenting education and support for families with school age children (ages 6-12).
- After reaching out to community agencies, GCHHS found limited parent support groups, mostly virtual, and no in person educational opportunities for parents with children in this age range.
- Several curricula were reviewed and “The Incredible Years”, an evidence based parenting education program, was selected.
- A GCHHS staff member completed training and is implementing the in-home parenting skills program with three families, who have an identified need of “Parenting Skills”.
- GCHHS worked with graduate students at the University of Minnesota Humphrey School of Public Affairs to help us develop a plan to evaluate our implementation of this program.

Incredible Years Program



IY Offers Three Training Programs for Parents:
Baby/Toddler (1 month - 2 years)
Preschool (3-5 years)
School Age (6-12 years)

**Goodhue
County**

To address the lack of parenting education resources for school aged children

**Incredible
Years**

An evidence based program for parents, children, and teachers that aims to prevent and treat children's behavioral problems and promote their social, emotional, and academic competence

Staff, Participants, and Activities

Activities

- Video instructions
- Homework tasks
- Role play
- Motivational interviews

Budget

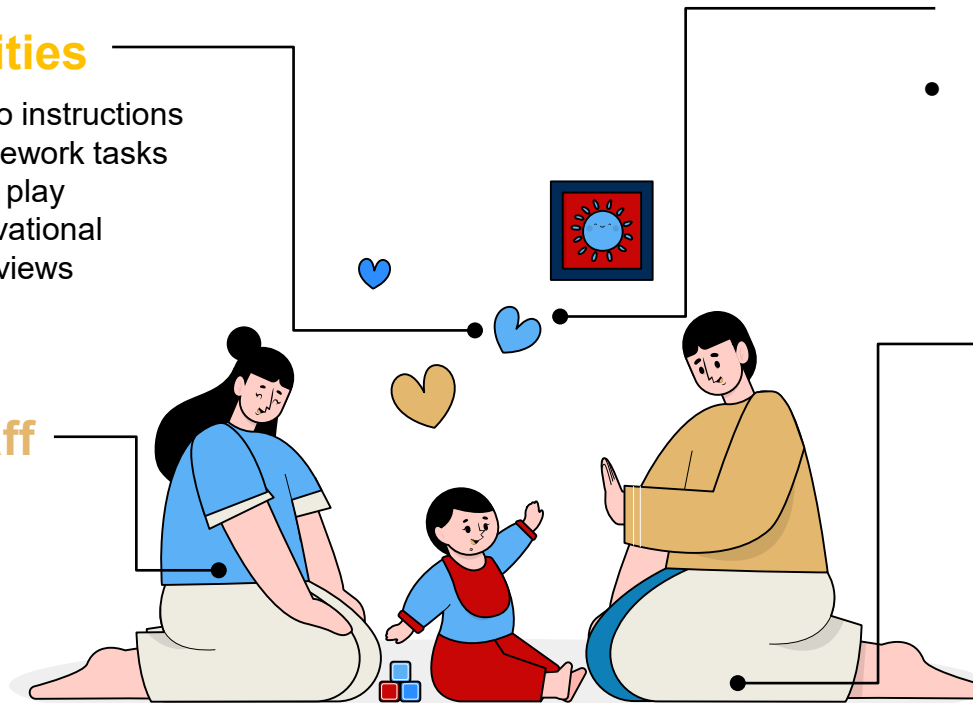
- Child Protection Opioid Epidemic Response allocation

Staff

- Social Service Supervisor
- Case Aid (IY Trainer)

Participants

- Two families at risk for out of home placement with parenting skills as an identified need.



FFPSA- Prevention Services

- The Parallel Protection Process allows families, their attorneys, social workers, guardians ad litem, and the county attorney to meet outside of court to share information and strive to reach a settlement agreement to help families successfully navigate the child protection court process.
- Family Group Decision Making and Case Planning conferences are used to increase family engagement not only by parents but also extended family members and the family's natural support network.
- These processes help ensure family's understand the child protection system and ensure they are participating in planning for next steps.
- In 2022, GC completed nine parallel protection process conferences and nine case planning conferences.

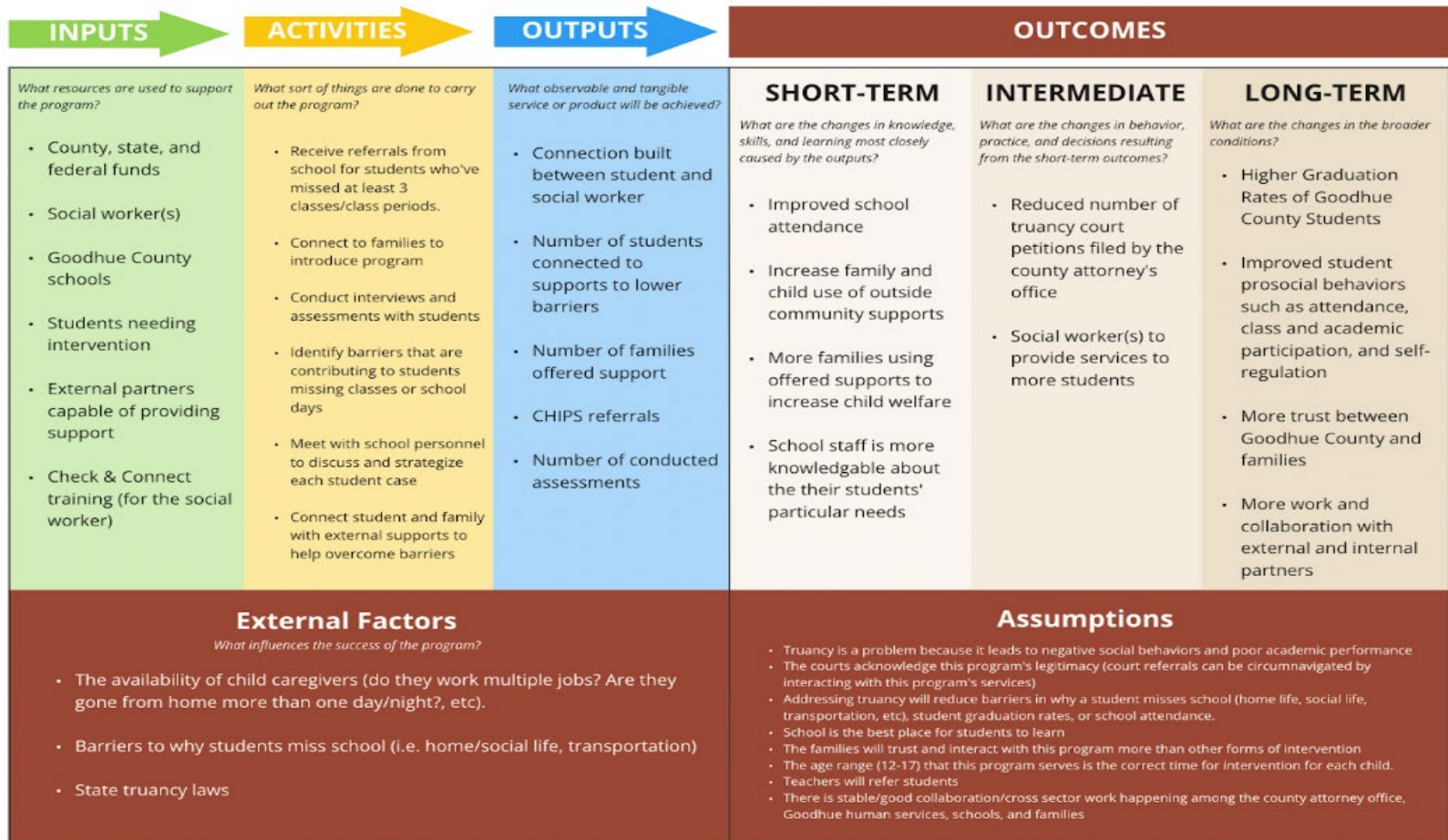
Parent Support Outreach Program

- The Parent Support Outreach Program (PSOP) is an early intervention program providing short-term voluntary support for at-risk children and families identified through screened out child maltreatment reports, community or self-referrals.
- Our PSOP case manager balanced a caseload of assessment and case management services of between 35-64 throughout 2022.
- The Early Childhood Social Worker, a shared position with the Goodhue County Education District, began providing PSOP services in the fall of 2022, increasing support to families at risk of maltreatment and out of home placement.

Truancy

- In August, 2021, GCHHS, the Goodhue County Attorney's Office, and the Goodhue County Education District worked together to make a plan to address truancy.
- GCHHS added a county agency social worker to focus on school attendance.
- The truancy caseload has consistently been over 40.
- In the fall of 2022, GCHHS worked with graduate students at the University of Minnesota Humphrey School of Public Affairs to help us evaluate the effectiveness of this shared position and the interventions implemented.
- The Goodhue County Family Collaborative has continued this work by engaging all school districts within Goodhue County, parents, youth, and the Goodhue County Attorney's Office in a truancy workgroup.

Goodhue County Health and Human Services: Truancy Intervention Logic Model



Licensing- Family Child Care

- One licensing social worker manages all family child care licensing duties- processing new applications, providing orientation, compliance with licensing regulations, annual home visits, and responding to reports of concern.
- DHS requires licensors to use ELICI, an electronic information management tool that is connected to the MN Licensing Look Up website, allowing families to have information about the status of a provider's license.



Licensing- Foster Care

- One foster care licensor carries a caseload of over 100 cases including Child Foster Care, Kinship Care, Adult Foster Care, Community Residential Setting, Child Welfare, Adoption/ Guardianship, and Interstate Compact referrals.
- The Rule 13 Audit completed in 2022 noted the competency of our licensor and her understanding of the regulations of each of these program areas.
- DHS staff also noted documentation deficiencies and we have implemented a plan to improve this by sending the home study documentation to DHS prior to the request for a license. However, delays with the review by DHS has created challenges.

Summary

- In 2022, Goodhue County Health and Human Services increased our utilization of family engagement tools including the parallel protection process, case planning conferences, in-home parenting skills, and family participation in the placement screening team.
- Goodhue County Health and Human Services caseload size is above recommended best practice guidelines and this could impact our ability to meet performance measures in the future.
- We continue to build partnerships to meet the needs of the family's we serve.
- Our dedicated and experienced staff members help families navigate challenges with compassion and skill!

- Questions? Thank you!