



Jess Greenwood, P.E.
Public Works Director/County Engineer
Goodhue County Public Works Department

2140 Pioneer Road
Red Wing, MN 55066
Office (651) 385-3025

TO: Honorable County Commissioners
Scott Arneson, County Administrator

FROM: Jess L. Greenwood, Public Works Director

RE: 2 May 2023 County Board Meeting
Approve the Establishment of School Zone Speed Limits on CSAH 66

Date: 27 April 2023

Summary

It is requested that the County Board approve the establishment of school zone speed limits on CSAH 66 (Pioneer Road) near Twin Bluff Middle School in Red Wing.

Background

In 2012, the Red Wing School District and the City of Red Wing, in cooperation with the County, were awarded a Mn/DOT SRTS Planning Grant for Twin Bluff Middle School. In 2013, a plan was finalized and implementation began. Since 2013, numerous plan recommendations, such as the construction of the Twin Bluff Road/Pioneer Road Roundabout and installation of rectangular rapid flashing beacons (RRFBs), and program recommendations, including Walking Wednesdays, have been implemented. The 2013 SRTS plan recommended performing an Engineering Study for the possible establishment of School Speed Zones around Twin Bluff Middle School. State statute allows local agencies to establish a school speed limit within a school zone of a public or non-public school upon the basis of an engineering and traffic investigation as prescribed by the Commissioner of Transportation. In 2020, the City received a SRTS grant to fund the required engineering/traffic investigation, and in 2021, County, City, and School District staff worked with an engineering consultant to finalize the study. The grant covered 100% of the study costs, which recommended a school speed zone near Twin Bluff Middle School. A map of the proposed school speed limit zone is attached. The current posted speed limit on CSAH 66 is 40 mph.

Alternatives

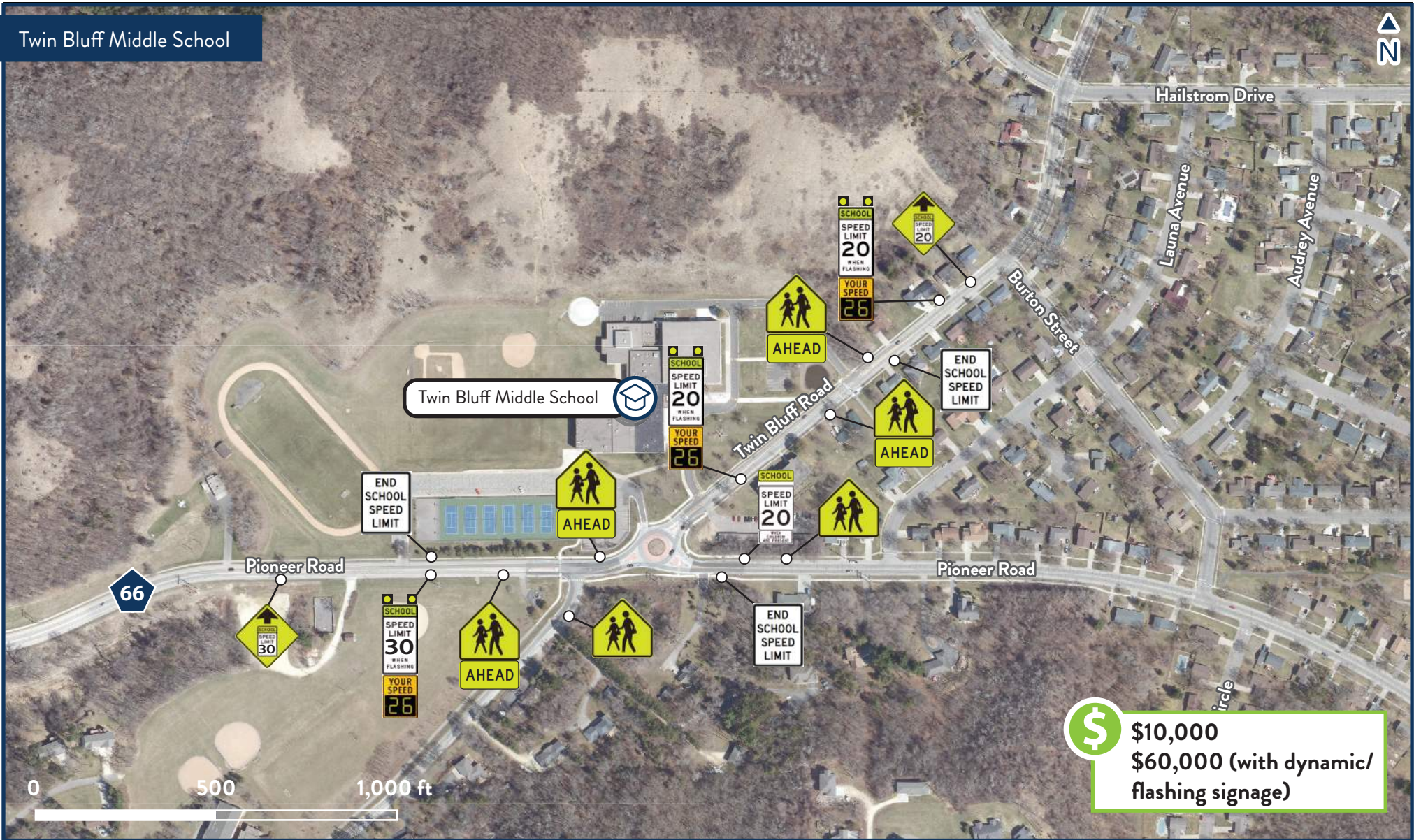
- Approve the establishment of speed zones on CSAH 66 near Twin Bluff Middle School.
- Take no action and leave the current speed limits on CSAH 66 in place.

Recommendations

It is the recommendation of staff that the County Board approve the establishment of school speed zone limits along CSAH 66 (Pioneer Road) near Twin Bluff Middle School in Red Wing. County staff would continue to work with the City and School District on sign placement, pavement markings, and other details associated with the school zone speed limit.

"To effectively promote the safety, health, and well-being of our residents"

Twin Bluff Middle School



SZ2. Proposed School Zone and Associated Signage

Red Wing, MN

Note: A sign inventory and detailed review of sight lines, roadway topography, and curvature was not completed due to the scope of this study. The sign locations are approximate and planning-level in design. Further review and design is required prior to implementation.

**BOARD OF COUNTY COMMISSIONERS
GOODHUE COUNTY, MINNESOTA**

02 May

Moved by C/____, seconded by C/____ and carried to approve the establishment of school zone speed limits on CSAH 66 (Pioneer Road) near Twin Bluff Middle School in Red Wing.

WHEREAS, the Minnesota Department of Transportation (MnDOT) administers the Safe Routes to School (SRTS) grants program which provides federal and state funding for projects to improve safety conditions and promote students walking and biking to school; and

WHEREAS, the City of Red Wing, in cooperation with the Red Wing School District, Goodhue County, successfully completed SRTS Plans for Twin Bluff Middle School in 2013 with many recommendations being implemented; and

WHEREAS, the City, School District, County, and MnDOT successfully completed a SRTS Engineering Study in 2021 to further advance remaining recommendations from the SRTS Plans; and

WHEREAS, the City proposes to establish school zone speed limits on several roads adjacent to Twin Bluff Middle School, including CSAH 66 (Pioneer Road), and

WHEREAS, approval from the County Board is needed to establish a school speed zone limit on CSAH 66; and

WHEREAS, County staff recommends approving the establishment of a school zone speed limit on CSAH 66.

NOW THEREFORE, BE IT RESOLVED, that the Goodhue County Board of Commissioners does hereby approve the establishment of school zone speed limits of 30 MPH "When Flashing" on CSAH 66 west of Twin Bluff Road.

State of Minnesota

County of Goodhue

Flanders	Yes ___	No ___
Anderson	Yes ___	No ___
Betcher	Yes ___	No ___
Majerus	Yes ___	No ___
Greseth	Yes ___	No ___

I, Scott Arneson, duly appointed, qualified and County Administrator of the County of Goodhue, State of Minnesota, do hereby certify that I have compared the foregoing copy of a resolution with the original minutes of the proceedings of the Board of County Commissioners, Goodhue County, Minnesota at their session held on the 2nd day of May, 2023, now on file in my office, and have found the same to be a true and correct copy thereof.

Witness my hand and official seal at Red Wing, Minnesota this 2nd day of May, 2023.

Scott Arneson

County Administrator