

MINNESOTA DEPARTMENT OF TRANSPORTATION RIGHT OF WAY PLAT NO. 25-9*

STATE PROJECT NO. 2514(61+3)901
IN THE WEST HALF OF SECTION 25, T.113 N., R.15 W.
GOODHUE COUNTY, MINNESOTA

* AMENDMENT TO: MINNESOTA DEPARTMENT OF TRANSPORTATION
RIGHT OF WAY PLAT NO. 25-8
STATE PROJECT. 2514(61+3)901
PARCEL 227B

THE COMMISSIONER OF TRANSPORTATION IS HEREBY DESIGNATING THE DEFINITE LOCATION OF TRUNK HIGHWAY NO. 61 FROM 0.25 MILE WEST TO 0.25 MILE EAST OF BENCH STREET IN RED WING

As shown on the plat prepared by the State of Minnesota Department of Transportation is hereby certified as the official plat of that portion of said T.H. 61 within the designated portion of Section 25 and the Commissioner's Order therefor, pursuant to Minnesota Statutes, section 161.6 subd. 2, section 161.4 Subd. 1, and section 161.65.

Commissioner's Order No. 67505 Location PLAT 25-9 Nature of Interest Define location, width, access, temporary easement and building removal easement.

Recommended for Certification: Certified:

Richard P. Brown
Commissioner of Transportation
Date 2-16-83
by F.C. Marshall
Assistant Commissioner of Transportation
Date 2-18-83

I hereby certify that this plat was prepared by me or under my direct supervision and that I am a duly Registered Land Surveyor under the Laws of the State of Minnesota; that this plat meets requirements of Minnesota Statutes, section 161.6 subd. 2, section 161.4 Subd. 1, and section 161.65 that parcel boundaries are correctly described and delineated on the plat and that the proposed right-of-way boundary lines are correctly delineated on the plat.
Certified by John E. Jensen 10460 2-16-83
Registered Land Surveyor Reg. No. Date
Office of Surveying & Mapping

I hereby certify that this plat was surveyed by me or under my direct supervision and that I am a duly Registered Land Surveyor under the Laws of the State of Minnesota; that all measurements are correctly shown on this plat and that all monuments have been correctly placed as shown on this plat.
Certified by Mark R. McQueen 11527 2-17-83
Registered Land Surveyor Reg. No. Date
MVDOT District Office

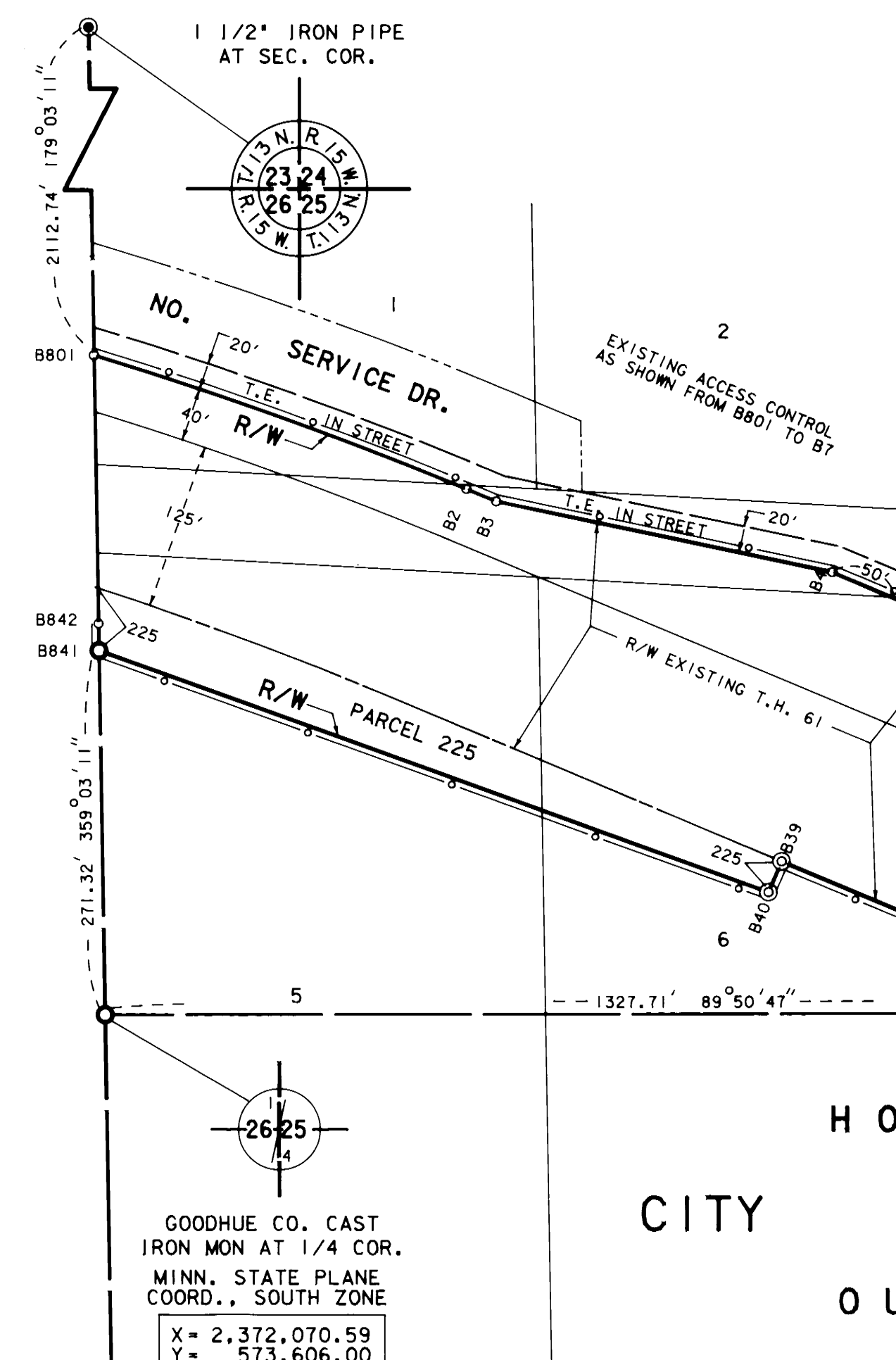
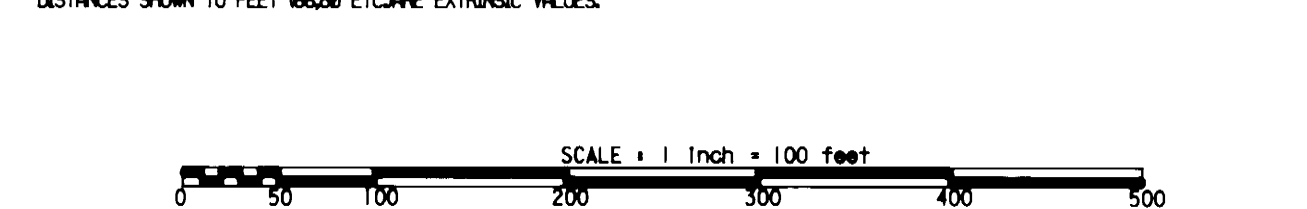
SURVEY STANDARDS

- The plat values, amounts and distances are based on the project control survey system.
- The boundary monuments shown on this plat have been field checked for location. The standard deviation for the monument position is 0.1".
- The state plane coordinate shown on one monument are based on ties to national control monuments.
- Certificates of Location have been filed at the County Recorder's Office and/or the County Surveyor's Office for the section corner monuments shown on this plat.
- For details of this survey contact the Surveying and Mapping Section at the Minnesota Department of Transportation, ROCHESTER, Minnesota.

AZIMUTH ORIENTATION AND GRID CONVERSION
Plat azimuths are oriented to Minnesota State Plane Coordinate System with 8 degrees 8 minutes 8 seconds being GRID NORTH.
Plat distances are ground lengths and can be converted to Minnesota State Plane Grid lengths by multiplying Plat distances by 0.9998794

CONVENTIONAL SYMBOLS

Section Line	Building Removal Easement	B. R. E.
Quarter Line	R/W Parcel Number	
Sixteenth Line	Access Control	
Property Line	Access Opening	
R/W Boundary	Cast Iron Monument or 2x2" D.D.T. Iron Pipe with Aluminum Cap	
Existing D.O.T. R/W Line	3/4" D.D.T. Iron Pin	
Other Road R/W's	Other Iron Monument	
Railroad R/W	Concrete or Stone Monument	
Private Easement	R/W Boundary Corner	
Temporary Easement		



GOODHUE CO. CAST IRON MON AT 1/4 COR.
MINN. STATE PLANE COORD., SOUTH ZONE
X = 2,372,070.59
Y = 573,606.00

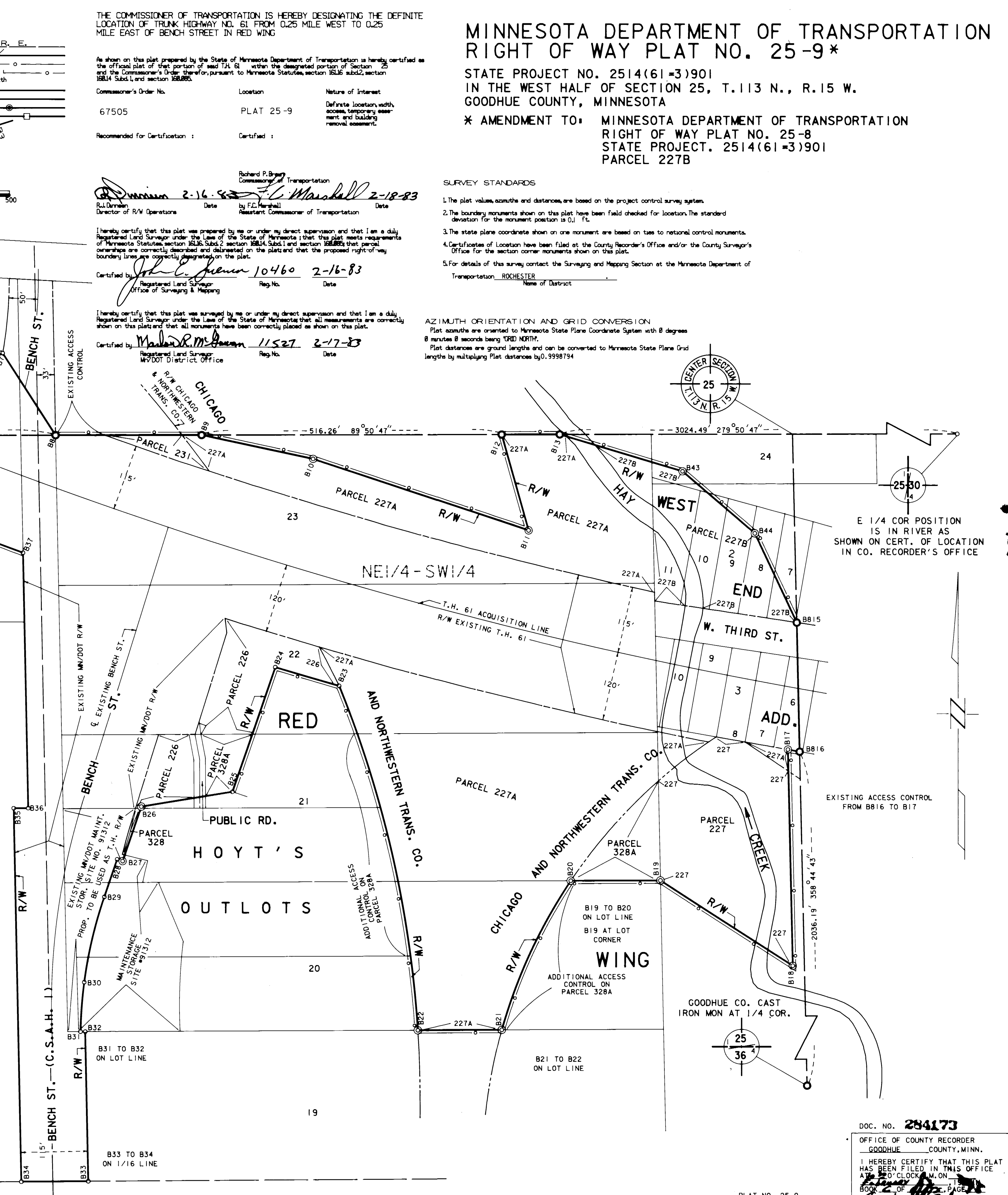
RIGHT OF WAY IN SECTION 25, WEST END ADDITION, AND HOYT'S OUTLOTS			
227B	RAEHN COMPANY	NE 1/4 SW 1/4 SEC 25 LOTS 7-11 WEST END LOTS 23&24 HOYT'S	FEE
		ACRES (MORE OR LESS)	
		0.01	
		SO. FT. (MORE OR LESS)	
		40318	

PLAT BOUNDARY DATA

POINT	DISTANCE	AZIMUTH
B801-B2	Δ 5'46.44" R	2902.50'
C	292.62' CAZ	109°54'17" ARC 292.75'
B2-B3	23.97'	112°47'39"
B3-B4	254.57'	101°55'33"
B4-B5	538.61'	112°47'39"
B5-B6	Δ 0°42'27" R	7537.82'
C	93.08' CAZ	112°26'25" ARC 93.08'
B6-B7	130.72'	62°46'35"
B7-B8	168.70'	141°28'27"
B8-B9	251.06'	89°50'47"
B9-B10	196.23'	102°08'40"
B10-B11	391.03'	108°30'44"
B11-B12	173.14'	344°27'51"
B12-B13	100.00'	89°50'47"
B13-B43	220.52'	106°50'34"
B43-B44	164.31'	130°56'21"
B44-B815	170.54'	155°02'09"
B815-B816	224.06'	178°44'43"
B816-B17	20.39'	280°01'55"
B17-B18	375.00'	178°44'43"
B18-B19	270.89'	302°58'28"
B19-B20	154.23'	269°44'01"
B20-B21	Δ 18°06'57" R	304.93'
C	284.93' CAZ	204°39'56" ARC 286.12'
B21-B22	144.19'	269°41'46"
B22-B23	Δ 18°14'35" R	1932.90'
C	612.84' CAZ	34°14'09" ARC 615.44'

PLAT BOUNDARY DATA

POINT	DISTANCE	AZIMUTH
B23-B24	Δ 0°50'31" R	7800.82'
C	114.61' CAZ	286°20'29" ARC 114.61'
B24-B25	228.88'	198°47'39"
B25-B26	158.82'	260°36'57"
B26-B27	100.00'	198°47'39"
B27-B28	10.00'	288°47'39"
B28-B29	68.68'	198°47'39"
B29-B30	Δ 11°20'58" R	768.51'
C	151.98' CAZ	199°01'09" ARC 152.23'
B30-B31	Δ 6°25'33" R	768.51'
C	86.15' CAZ	184°13'56" ARC 86.15'
B31-B32	8.06'	89°34'50"
B32-B33	259.41'	178°51'51"
B33-B34	115.00'	269°32'39"
B34-B35	647.75'	358°51'51"
B35-B36	25.00'	89°45'09"
B36-B37	443.39'	358°51'51"
B37-B38	Δ 2°32'22" R	7750.82'
C	343.50' CAZ	29°31'28" ARC 343.53'
B38-B39	489.98'	292°47'39"
B39-B40	25.00'	202°47'39"
B40-B41	526.76'	289°04'12"
B41-B42	20.00'	359°03'11"
B42-B43	200.47'	359°03'11"



E 1/4 COR POSITION IS IN RIVER AS SHOWN ON CERT. OF LOCATION IN CO. RECORDER'S OFFICE

DOC. NO. 284173
OFFICE OF COUNTY RECORDER
GOODHUE COUNTY, MINN.
I HEREBY CERTIFY THAT THIS PLAT HAS BEEN FILED IN THIS OFFICE AT 2:00 O'CLOCK P.M. ON
DATE OF
COUNTY RECORDER