



# GOODHUE COUNTY MINNESOTA

TO EFFECTIVELY PROMOTE THE SAFETY, HEALTH, AND WELL-BEING OF OUR RESIDENTS

**GOODHUE COUNTY BUDGET COMMITTEE**  
**ADMINISTRATION CONFERENCE ROOM**  
**GOVERNMENT CENTER, RED WING**  
**JUNE 8, 2021**  
**9:00 A.M.**

## Virtual Meeting Notice

“Due to concerns surrounding the spread of COVID-19, it has been determined that in-person meetings or meetings conducted under Minn. Stat. 13D.02 a are not practical or prudent. Therefore, meetings that are governed by the Open Meeting Law will temporarily be conducted by telephone or other electronic means pursuant to Minn. Stat. 13D.021.”

“Goodhue County will be conducting a budget committee meeting pursuant to this section on June 8, 2021 at 9:00 a.m. in the Administrative Conference Room. The County Administrator and/or appropriate staff will be present at the meeting location. All County Commissioners and Outside agencies attending will appear by telephone or other electronic means. The public may monitor the meeting from a remote site by logging into <https://global.gotomeeting.com/join/456450893> or calling [1 877 309 2073](tel:18773092073) any time during the meeting.” Access Code: [456-450-893](tel:456450893)

1. 9:00 A.M. Southern MN Initiative Foundation

Documents:

[SMIFoundation.pdf](#)

2. 9:10 A.M. Southern MN Tourism

Documents:

[Southern MN Tourism.pdf](#)

3. 9:20 A.M. Red Wing Ignite

Documents:

[Red Wing Ignite.pdf](#)

4. 9:30 A.M. Cannon Valley Trail

Documents:

[CV Trail.pdf](#)

5. 9:40 A.M. Goodhue County History Center

Documents:

[GC History Center.pdf](#)

6. 9:50 A.M. Goodhue County Soil & Water Conservation District  
Documents:

[Soil and Water.pdf](#)

7. 10:10 A.M. Goodhue County Fair  
Documents:

[Goodhue County Fair.pdf](#)

8. 10:20 A.M. Cannon Valley Fair  
Documents:

[CV Fair.pdf](#)

9. 10:30 A.M. Goodhue County Humane Society  
Documents:

[Humane Society.pdf](#)

10. 10:40 A.M. South Eastern EMS  
Documents:

[SE EMS.pdf](#)

11. 10:50 A.M. SEMCAC Senior Nutrition  
Documents:

[SEMCAC.pdf](#)

12. 11:00 A.M. Hope Coalition  
Documents:

[Hope Coalition.pdf](#)

13. 11:10 A.M. Southeastern MN Multi County Housing & Redevelopment Authority  
Documents:

[SEMMCHRA.pdf](#)

14. 11:20 A.M. Zumbro River Regional Water Trail  
Documents:

[ZRRWT.pdf](#)



SOUTHERN MINNESOTA  
INITIATIVE FOUNDATION

525 Florence Avenue • PO Box 695 • Owatonna, MN 55060-0695  
PH 507.455.3215 • FAX 507.455.2098 • [smifoundation.org](http://smifoundation.org)

May 19, 2021

Scott Arneson  
Goodhue County Economic Development Authority  
509 5th St W  
Red Wing, MN 55066-0408

Hello Mr. Arneson,

35 years ago, a devastating farming crisis swept across greater Minnesota. In response, Southern Minnesota Initiative Foundation (SMIF) along with five other regional foundations, were created to provide economic and philanthropic support to the 80 rural counties of Minnesota. 35 years later, we are faced with another crisis threatening the vitality of our region.

Southern Minnesotans have inspired us with their strength and unity in the face of the COVID-19 pandemic. At SMIF, we are proud to have facilitated more than \$12 million in relief to our region through emergency grants, loans and additional support such as professional trainings and one-on-one assistance. We have also continued our \$5 million in annual programming and grantmaking. Below is the impact we made last year in your county:

## *In Goodhue County...*



**\$715K** in COVID-19 response funding was distributed to entrepreneurs, child care providers and communities.



**63** early childhood professionals were impacted through grants, trainings and technical assistance.



**85** businesses were impacted through our entrepreneur programming, grantmaking and lending.



For 35 years, SMIF has served the region in times of need. The enclosed fact sheets highlight this work and feature stories from those impacted by your financial gift. Thank you for your gift of \$2,500 on 5/29/2020. **Will you consider making a donation to SMIF again in 2022?** With your support, we can continue to invest in our region's early childhood professionals, entrepreneurs and communities.

Sincerely,

Tim Penny  
President & CEO

cc: John Peterson, Board Member

Collaborating for Regional Vitality





SOUTHERN MINNESOTA  
INITIATIVE FOUNDATION

Collaborating for Regional Vitality

# Goodhue County Investments

We envision southern Minnesota as a prosperous and growing region with vibrant communities, innovative and successful economies, and engaged and valued citizens. To achieve this vision, Southern Minnesota Initiative Foundation, a regional development and philanthropic organization, fosters economic and community vitality in 20 counties of southern Minnesota through a culture of collaboration and partnership.

For every donation of  
from Goodhue County

\$1

=

\$18

is invested back into  
Goodhue County  
communities.\*

\*Includes grants, loans & programming

48 LOANS

\$2.6 million to Goodhue County entrepreneurs

200 GRANTS

\$1 million to support community initiatives

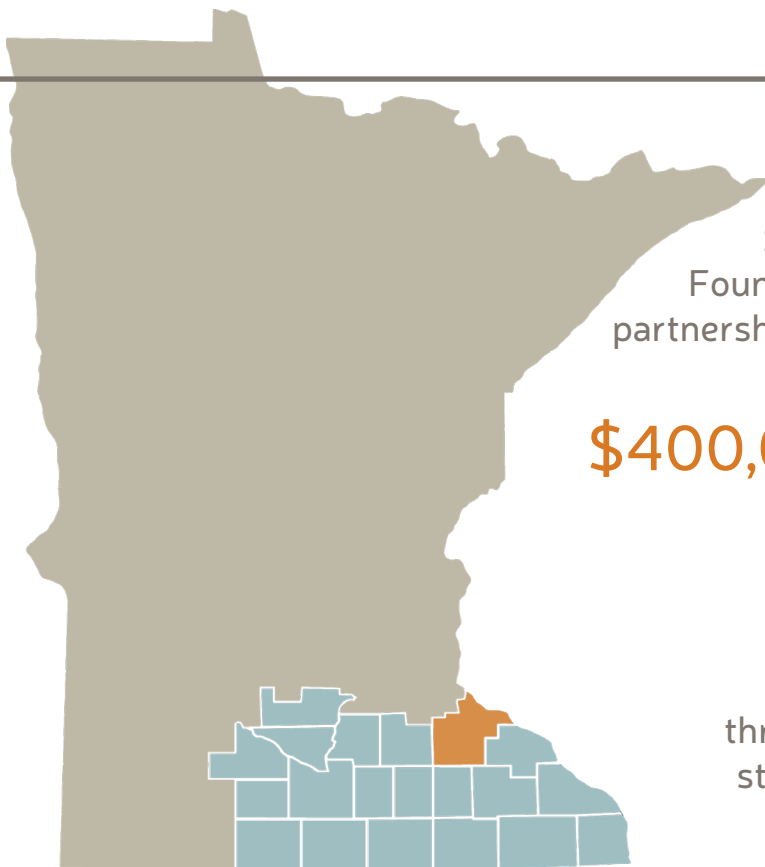
***\$5 million invested annually to the 20 counties of  
south central and southeastern Minnesota***

Since 1986, Southern Minnesota Initiative Foundation has leveraged local investments & partnerships to create a stronger **Goodhue County**:

**\$400,000** in local donations to SMIF

**\$7 million**

invested by SMIF in Goodhue County through grants, loans, and programming for stronger kids, businesses and communities



## Loans & Equity Investments\* Supporting local entrepreneurs & creating jobs

River Bluff Technologies Incorporated, Red Wing	Cloud-based insurance company customer management technology
Total Farming Technologies, Pine Island	Agriculture and construction equipment business
Maple Island Inc., Wanamingo	Food powder processing and packaging
Under the Rainbow Childcare Center Incorporated, Red Wing	Child care center
The Bleu Dog Café, Welch	Small restaurant and catering
Live, Give, Save Inc., Red Wing	Mobile app to empower and reward consumers to spend wisely
Small Business Emergency Loans	Five businesses received COVID-19 relief loans

\*Southern Minnesota Initiative Foundation in partnership with CEDA and DEED hold the Comprehensive Economic Development Strategy for Region 10, allowing these counties to apply for Economic Development Administration funding at the Federal level.

## Grants Investments in economic development, early childhood and community vitality

AmeriCorps LEAP Initiative, Cannon Falls Preschool	Members helping with social-emotional skill development
City of Pine Island	Grant to support businesses impact by COVID-19
Zumbrota-Mazeppa National Honor Society	20 gallons of paint awarded for murals and school halls
Kenyon-Wanamingo Schools	Hundreds of books awarded through multiple literacy grants
Cannon Falls Economic Development Authority	Grant to address impact of COVID-19
A B.SEE Preschool & Early Learning Center, Cannon Falls	Start-up/expansion grant to child care facility
United Way of Goodhue, Wabasha & Pierce Counties	Hundreds of books awarded for The Little Blue Bookshelf
Renewing the Countryside	Grant to assist local foods farmers affected by COVID-19
Community Foundation Relief Fund Grant, Wanamingo	Grant to support COVID-19 relief efforts in the community
Emergency Child Care Grants	45 child care providers/centers received COVID-19 relief dollars
Small Business Relief Grants	56 businesses received COVID-19 relief grants

## Affiliate Funds Increasing rural philanthropy

Goodhue Community Foundation	Wanamingo Community Foundation
Wings—Donor Advised Fund (Red Wing Area)	

## Community Collaborations Bringing communities together for change

City of Zumbrota, Regional Community Growth Initiative	Pine Island, Biobusiness Community Growth Initiative
Pine Island EDA, Regional Community Growth Initiative	Rural Entrepreneurial Venture (REV) Community, Lake City
Red Wing, Entrepreneur Community Growth Initiative	Kenyon-Wanamingo Early Childhood Initiative (started in 2017)
Red Wing Early Childhood Initiative—Every Hand Joined (started in 2009)	

## Making a Difference

Supporting inclusive communities and small town growth



SMIF's Rural Entrepreneurial Venture (REV) program helps small towns develop new approaches to economic growth. Lake City participated in REV from 2018 – 2020. One of their goals was to do better outreach to members of the Hispanic community in town in order to learn how to provide more equitable access to community and business resources, and to be more welcoming as a community. They ended up hiring an AmeriCorps VISTA member through SMIF who conducted interviews with 25 Hispanic families to provide the EDA with information on the demographics and needs of the Hispanic community.

# Your Gift

## ENABLED US TO RESPOND QUICKLY TO THE COVID-19 CRISIS

### TOTAL IMPACT: MORE THAN \$12 MILLION



### Community Foundation Relief Grants

SMIF provided \$101,218 in matching grants to 21 of our community foundations to support their localized relief efforts. By leveraging this opportunity, they were able to provide a total of \$121,050 to their communities, impacting more than 56,000 people.

### Emergency Child Care Grants

SMIF provided \$254,950 in immediate financial support to licensed child care providers. 491 family providers and 34 centers were awarded with immediate funds, serving approximately 1,800 children in southern Minnesota.



### Grow a Farmer Assistance Grants

SMIF awarded three organizations \$10,000 each through the Grow a Farmer Assistance Fund. They are working collaboratively to support at least 120 farmers in southern Minnesota through grants that help their businesses respond to new challenges.

### Small Town Grants

SMIF awarded 22 organizations a total of \$192,500 to respond and recover from the hardships created by the crisis and the impact on their communities, all of which have populations of less than 10,000.



### Small Business Relief Grants and Loans

SMIF distributed 1,024 MN DEED Small Business Relief Grants to southern Minnesota businesses for a total of \$10,240,000. The grants support businesses that have experienced financial hardship as a result of the crisis. Additionally, SMIF dispersed 50 MN DEED Small Business Emergency Loans for a total of \$1.2 million.

### Early Care and Education Wrap Around Grants

SMIF approved 18 Early Care and Education Wrap Around Grants totaling \$180,000 in partnership with Minnesota Department of Education. This grant helped fund early care and education wrap around services for children birth to age eight from underserved populations impacted by the pandemic.



*Learn how you can help!*

To learn more about our **COVID-19 RESPONSE**, and the many partners and donors who have supported these efforts, visit [smifoundation.org/covid-19](https://smifoundation.org/covid-19). Making a gift to SMIF's general endowment supports these response efforts, including expenses related to the administration of these emergency funds and other essential response resources. Visit [smifoundation.org/donate](https://smifoundation.org/donate) to make a gift.

# Your Gift MADE AN IMPACT ON THEIR STORIES

“ In February 2020 when we were jumping-up-and-down-ecstatic to receive a Child Care Expansion Grant through SMIF, we didn't fully understand the true impact it would have on our ability to provide a safe, caring environment for children and families during one of the darkest times of our lives. Not only did the grant allow us to open an additional classroom during the pandemic so the children could learn safely in smaller group sizes, we also received critical support from the dedicated professionals at SMIF. Jeff Andrews helped us work through financial management and planning while John Katz went above and beyond to help us solve issues we were having with our online QuickBooks program. In this time of social distancing, it's this encouragement and generosity that helped our staff remain positive and know that their work was making a true difference in the lives of others. We cannot thank the donors and professionals of Southern Minnesota Initiative Foundation enough for your foresight, dedication and support throughout this pandemic.”



**-CHRISTINA VALDEZ, DIRECTOR OF LISTOS PRESCHOOL AND CHILDCARE**

“ I'm so grateful to Southern Minnesota Initiative Foundation for their Grow A Farmer Assistance Grant. We've so far distributed funds to our members for things as diverse as installing internet on their farm, getting drone photography, starting up a tea business, buying COVID safety and health equipment and supplies, setting up an online fiber sale site, and more than that. It's been really interesting to see what the farmers are doing with these funds. We're all really dependent on each other when we're small entrepreneurs like this and the more healthy our local economy is we all do better. We've kind of adopted that model for ourselves, 'We all do better when we all do better.' From everyone in the Cannon River Sustainable Farming Association to Southern Minnesota Initiative Foundation, a big thank you for supporting us in our Cannon Valley Grown Project.”



**-GWEN ANDERSON, BOARD SECRETARY OF CANNON RIVER SUSTAINABLE FARMING ASSOCIATION**

“ In April of 2020, Preston Area Community Foundation (PACF) discussed ways to help the local business community at the onset of the pandemic challenges. PACF reached out to the local EDA to develop a grant and loan program for local businesses to use for normal operating expenses. At this same time, SMIF made available a Community Foundation Relief Fund to be used by community foundations to address pandemic issues in their community. PACF reached out to the F & M Community Bank for support to take advantage of the \$5,000 SMIF matching grant and generously, the bank agreed to underwrite the entire \$5,000 PACF contribution. Thanks to SMIF and F & M Community Bank, the EDA loan and grant program funds increased to \$30,000. To date, over \$21,000 has been provided to local businesses with applications still being accepted. Preston area businesses have been so grateful to receive this support during these challenging times. Our community stepped up this year and we are proud of the work PACF accomplished with the help of local organizations and SMIF.”



**- CHUCK AUG, BOARD MEMBER OF PRESTON AREA COMMUNITY FOUNDATION**

**Goodhue County**  
**Outside Agency Funding Request Form**

<b>Budget</b>		<b>Estimated 2022</b>	<b>Estimated 2023</b>
<b>Revenues</b>			
	Fees:	\$ 66,950	\$ 68,959
	Grants:	\$ 798,250	\$ 822,198
	State/Federal Funding:	\$ 566,500	\$ 583,495
	Other Revenue:	\$ 4,933,700	\$ 5,081,711
<b>Total Revenues:</b>		<b>\$ 6,365,400</b>	<b>\$ 6,556,362</b>
<b>Expenses</b>			
	Salaries:	\$ 1,503,800	\$ 1,548,914
	Benefits:	\$ 375,950	\$ 387,229
	Professional Services:	\$ 267,800	\$ 275,834
	Services & Charges:	\$ 112,785	\$ 116,169
	Supplies & Materials:	\$ 168,920	\$ 173,988
	Other Expenses:	\$ 3,936,145	\$ 4,054,229
	Capital:		
<b>Total Expenses:</b>		<b>\$ 6,365,400</b>	<b>\$ 6,556,362</b>
<b>Requested Funding From County:</b>			
<b>Number of Staff</b>		<b>20</b>	<b>20</b>





# Southern Minnesota Tourism Association

[www.ExploreSouthernMinnesota.com](http://www.ExploreSouthernMinnesota.com)

June 7, 2021

Dear Goodhue County,

Thank you for your county's continued support of funding of the Southern Minnesota Tourism Association (SMTA). **Based on SMTA's funding model we would ask \$.05/per capita based on the population of the 2019 U.S. Census Bureau Population Estimates (invoice included).** *We always encourage full per capita funding, but sincerely appreciate the level of support your county can make to Southern Minnesota Tourism Association's Regional Tourism Marketing efforts.*

Your contribution to the Southern Minnesota Tourism Association directly benefits economic development in your county and the entire state. Prior to COVID-19, tourism was a \$16 billion industry in Minnesota employing over 270,000 people in Minnesota's Leisure and Hospitality Industry. With the devastating impact of COVID-19 on tourism and the hospitality industry, this funding is needed now more than ever to help our all of our counties and their many businesses recover.

With the assistance of Explore Minnesota State Tourism, SMTA implements an annual Marketing Plan typically between \$20,000 to \$30,000 and includes print, digital, content, and other advertising and marketing strategies. The current target audience for SMTA marketing includes Nebraska (Omaha), Iowa (Des Moines, Ames, Cedar Falls, and Waterloo), Wisconsin (La Crosse, Eau Claire, Madison, and Milwaukee), and Minnesota (Twin Cities metro area, St. Cloud, and statewide). The current SMTA Marketing plan is included for reference. By pooling our resources among 36 counties, we are able to reach a broader audience and execute marketing plans that could not be achieved by individual counties alone.

Through the marketing efforts of the Southern Minnesota Tourism Association, Explore Minnesota, and individual communities and tourism organizations in southern Minnesota your County's appropriation allows us to market the entire southern region of Minnesota as a viable travel destination to non-resident and resident travelers.

Marketing tourism is an investment in the economy of your county and we appreciate your continued support of Southern Minnesota tourism.

Thank you,

Southern Minnesota Tourism Association Board of Directors



# Southern Minnesota Tourism Association

## 2021 SMTA Marketing Plan

Southern Minnesota marketing dollars come from \$.05/per capita from the 36 Counties of Southern Minnesota. It is a collective investment in Tourism Marketing of Southern Minnesota. SMTA implements an annual Tourism Marketing Plan that leverages funding from the 36 counties that make up SMTA for a total marketing plan valued at \$178,208.00



### 2021 Investment by SMTA

= \$23,276.00

### Marketing Plan Valued at

= \$178,208.00



### 2021 Southern Minnesota Guide

- 35,000 guides distributed at Explore Minnesota Welcome Centers, Mall of America and regional destination marketing organizations.
- 15,000 copies inserted into the St. Cloud Times and surrounding areas
- 50,000 copies inserted into the Star Tribune
- Mailed to visitor/consumer requests for the Southern Minnesota Travel Guide from ExploreMinnesota.com & ExploreSouthernMinnesota.com



### Iowa Sportsman Magazine

- Readership was over 121,000
- Electronic connections were almost 275,000.

Participating in the Iowa Sportsman was a win for all our southern region as we can highlight the great outdoors which includes all 36 counties in Southern Minnesota.



### Star Tribune Marketing Campaign

- Targeted emails to 50K in the St. Cloud area, open rate nearly 20%
- StarTribune.com display generated 300K of the total impressions
- Behavioral Targeted display generated over 330K total impressions
- Geo Fencing drove over 240K impressions



### MN Trails Magazine

- Ads were included in 80K issues printed
- Nearly 20K views online



# INVOICE

## Southern Minnesota Tourism Association

Southern Minnesota Tourism Association  
**P.O. Box 173 ←(Note PO Box Change)**  
 Fairmont, MN 56031

06/07/21  
 Invoice #1122  
 Goodhue County

Goodhue County  
 Auditor/Treasurer  
 509 W 5th St  
 Red Wing, MN 55066

### 2022 Funding Request

Year	Population	\$0.05 per capita 2022 Funding Request	Additional Funding
2022	46,340	\$2,317.00	\$

Make all checks to **Southern Minnesota Tourism Association**. If you have any questions please contact Erica Volkir at erica.pipestonechamber@gmail.com or 507.825.3316.

Balance due: \$2,317.00



June 1, 2021  
Goodhue County Board  
Stacy Nimmo, Executive Director of Red Wing Ignite  
Grant Request 2022-23

Red Wing Ignite advances innovation by bringing together like-minded individuals to create a thriving community. We provide resources, networks and needed expertise for students, entrepreneurs and businesses to succeed in a 21st Century economy.

We thank you for the \$10,000 we received last year. We leveraged those dollars and focused our efforts on supporting students, entrepreneurs and businesses.

We continue to steward grant and other funding made available by the EDA, State, and local sources. As a partner of the Center on Rural Innovation organization, we are connecting and networking with other like-minded rural communities across the nation. Red Wing Ignite serves as 1 of 6 innovation hubs for LaunchMN funding through MN DEED as we collaborate with 16 partner organizations in 11 counties across SE Minnesota.

These designations affirm the ecosystem that we are building to foster innovation. Red Wing Ignite is committed to strengthening Goodhue County in all of these areas, as demonstrated in our 2020 accomplishments listed below:

## **Building our Future Workforce**

---

### CONNECTING STUDENTS TO BUSINESSES

#### ELEVATING STEAM LEARNING

- Completed our 3rd year facilitating the Goodhue Co. Collaborative Youth Skills Training/Learn and Earn Grant through the MN Department of Labor and Industry through the pandemic.
  - 5 participating school districts, 21 manufacturing employer worksites as learning placements for students, and 6 local companies provided virtual industry tours
- Certified 10 students with an industry recognized credential (OSHA 10) who also earned college credit
- Retained 3 students as regional employers - 2 entry level machinists and 1 electrical apprentice
- Participated in RWPS District Advisory Committee and Winger Flight Paths

program implementation

## **Advancing our Entrepreneurs**

---

### PARTNERING WITH REGIONAL, STATE, AND NATIONAL NETWORKS

- Became a satellite site for MN SE Small Business Development Center - offering free consulting services to any business owner in Goodhue County

- Expanded Entrepreneurs First Collaborative to include 16 partner organizations across the SE Region
- Held 8 series of R.E.D Talk sessions hosted with area entrepreneurs with 130+ attendees
- 125 attendees for the virtual E1 Ignite Cup
  - 2019 and 2020 Ignite Cup winners went on to win \$70K in the 2020 MN Cup pitch event

#### SUPPORTING and MENTORING ENTREPRENEURS

- Completed 314 hours of 1:1 mentoring with entrepreneurs
- Offered 2864.5 hours of educational entrepreneurship events/webinars with 2670 in attendance across the SE Minnesota region in collaboration with E1 partners
- Completed 650 hours of Lean Startup Training for 18 entrepreneurs alongside ILT Studios
- \$22,125.24 in Technical Assistance funding awarded to 10 area businesses

### **Strengthening our Business Environment**

---

#### HOSTING A CO-WORKING SPACE TO WORK AND MEET

- Managed coworking space in accordance with CDC COVID-19 guidelines and recommendations and closed when prompted by the state of MN
- Hosted virtual programs, such as *Marketing in the Morning*
- Expanded programming to support entrepreneurs, students, and other stakeholders by pivoting to virtual platforms like: Zoom, Remo, Gathertown, and Mural

#### MANAGING A REGIONAL MAKERSPACE

- We are currently in a relaunch for 2021 after being closed most of 2020 due to the pandemic
- Expanded on Visioning Committee for 2021 relaunch

#### GROWING THE TALENT PIPELINE

- Offered digital upskilling “The Future is Digital Challenge” in partnership with Center on Rural Innovation to provide Goodhue County residents with opportunities to obtain Nanodegrees in business analytics, digital marketing, and front-end web development
  - 13 enrolled and 4 awarded nanodegree certificates: 3 in Digital Marketing and 1 in Business Analytics
- Brought on a Lead for Minnesota: Hometown Fellow from Lead for America/AmeriCorps as Red Wing Ignite’s Community Engagement Catalyst

## Looking Forward:

---

Red Wing Ignite will continue to ignite innovation in rural Minnesota by bringing together the talent and resources needed to create an innovative ecosystem. We will leverage our unique strengths and our proven success convening and leading stakeholders across public and private sectors. As local, state and federal funding is secured we will:

1-**Advance Innovators and Entrepreneurs** through the continued creation and ongoing management of a hybrid incubator using virtual and in-person education, mentoring with top talent, technical assistance funds, access to investors and individual coaching.

2-**Enhance Regional Connectivity** by convening ecosystem builders and stakeholders in 11 counties of SE MN to administrate the Entrepreneurs First (E1) Collaborative. Creating a concentration of talent, people and resources to directly benefit entrepreneurs and the organizations serving them by simplifying the way individuals navigate the entrepreneurial ecosystem.

3-**Cultivate the Workforce of the Future** by convening industry, education and workforce development to attract, retain, and develop the talent needed to meet employer demand. RWI will advance students through worksite learning and hybrid courses in high demand, high growth fields

<b>Budget</b>		<b>Estimated 2022</b>	<b>Estimated 2023</b>
<b>Revenues</b>			
	Fees:	\$ 2,000	\$ 2,000
	Grants:		\$ 40,000
	State/Federal Funding:	\$ 602,734	\$ 460,000
	Other Revenue:	\$ 27,300	\$ 27,300
<b>Total Revenues:</b>		\$ 632,034	\$ 529,300
<b>Expenses</b>			
Administrative	Salaries & benefits :	\$ 164,597	\$ 154,400
Program services leads- entrepreneur education, workforce development, E1 Collaborative partners	Program services:	\$ 162,200	\$ 150,000
Makerspace, technical assistance for entrepreneurs, OSHA 10 training for	Program expenses:	\$ 138,400	\$ 125,000
Accounting, legal, insurance etc.	Professional Services:	\$ 18,960	\$ 18,000
tellephone,internet,website, repairs and maint.	Services & Charges:	\$ 13,560	\$ 13,000
Marketing printing, misc supplies, meeting expenses,	Supplies & Materials:	\$ 60,360	\$ 45,000
travel, events, makerspace	Other Expenses:	\$ 13,560	\$ 12,000
	Capital:	\$ 60,000	\$ 20,000
<b>Total Expenses:</b>		\$ 631,637	\$ 537,400
<b>Requested Funding From County:</b>		\$ 15,000	\$ 15,000
<b>Number of Staff</b>		5.25 = 1.75 - employees , 1.5 contractors, 1 Lead4MN Fellow, 1 VISTA	5.25 = 1.75 employees, 1.5 contractors, 2 VISTA

## Goodhue County

### Outside Agency Funding Request Form

Budget			2021 Budget	Estimated 2022	Estimated 2023
<b>Revenues</b>					
	Fees:		\$ 115,000	\$ 115,000	\$ 115,000
	Grants:		\$ 294,931	\$ 280,218	\$ 225,623
	State/Federal Funding:				
	Other Revenue:	City of CF	\$ 48,708	\$ 48,988	\$ 49,274
		City of RW	\$ 97,118	\$ 97,978	\$ 98,550
<b>Total Revenues:</b>			\$ 555,757	\$ 542,184	\$ 488,447
<b>Expenses</b>					
	Salaries:		\$ 173,000	\$ 176,460	\$ 179,989
	Benefits:		\$ 33,800	\$ 34,476	\$ 35,165
	Professional Services:		\$ 6,700	\$ 6,834	\$ 6,970
	Services & Charges:		\$ 25,900	\$ 26,826	\$ 27,363
	Supplies & Materials:		\$ 31,700	\$ 32,844	\$ 33,354
	Other Expenses:				
	Capital:		\$ 362,291	\$ 342,672	\$ 269,723
<b>Total Expenses:</b>			\$ 633,391	\$ 620,112	\$ 552,564
<b>Requested Funding From County:</b>			\$ 140,379	\$ 141,187	\$ 142,010
<b>Number of Staff</b>			1 Full time / 16 part-time	1 Full time / 16 part-time	1 Full time / 16 part-time

2% increase for 2022 & 2023





**1166 Oak Street**  
**Red Wing, Minnesota 55066**  
651-388-6024 ♦ 651-388-3577 Fax  
[www.goodhuecountyhistory.org](http://www.goodhuecountyhistory.org)

May 24, 2021

Goodhue County Commissioners  
509 W.5<sup>th</sup> Street  
Red Wing, MN 55066

Dear Commissioners,

On behalf of the Goodhue County Historical Society, I have submitted the enclosed budget request for 2022 and 2023. We believe that our request allows us to continue stabilizing the organization's operations while also building capacity for the future. This past year we have taken advantage of every program available for financial help during Covid. We feel fortunate the funding was possible.

We are requesting to maintain \$127,000 for 2022 and for 2023 an increase by \$5,000 to make total allocation \$132,000. This is based on several factors, which are outlined below:

1. **Grant Funding does not cover administrative costs:** Grant funders, in an overwhelming majority of cases, do not allow administrative or overhead costs to be written into those grant requests.
2. **Program Growth:** We continue to increase our programming efforts, which bring in new donors, members, volunteers, and visitors to the History Center. We are excited about our new program, "**History on the Road**". We are videoing people, places, and sharing stories from all around Goodhue County on social media.
3. **Education Program Improvements:** With the aid of the Red Wing Shoe Company Foundation and the Jones Family Foundation, our organization engaged local educators from across the county to identify areas where we could provide support to incorporate local history into curriculum. This plan identified both on-site and off-site program ideas, which will be implemented over the next five years. To carry out this plan, we need to continue supporting our Education & Outreach Coordinator position.

4. **Collections Stewardship and Exhibit Development:** Our plan is to apply for grant funding to begin work on the photograph and archival material collections in 2022 - 2023. Staff is continuing to identify exhibit improvements so that we can continue to attract new and repeat visitors. To meet professional standards, we must look beyond grant funding to continue our collection and exhibit work. GCHS's collection contains more items than can ever be displayed or physically accessed at one time. Therefore, the Goodhue County Historical Society plans to make its collection widely available to the public. In 2019, GCHS and several other history organizations joined a project organized by the Minnesota Alliance of Local History Museums (MALHM) to establish a new online collections database system. The transfer of GCHS's collections data began in January 2020 and is still in progress. Although many images still need to be added, you can now access the majority of the Society's collection on [MNCollections.org](http://MNCollections.org).
  
5. **Covid – 19 Collecting Project:** GCHS is collecting stories from the public relating to the Covid -19 Pandemic in Goodhue County .the mission of this project is to document and preserve stories from Goodhue County residents for future use as research and other educational purposes. The stories will be permanently housed in the GCHS Research Library and Archives. GCHS staff have created a form that can be filled out by anyone interested in contributing to this project.

Goodhue County Historical Society received Covid vaccine boxes and empty vials from Goodhue County Health and Human Services and Mayo Clinic. These vaccine boxes and empty vials will help document these historic times for future generations.

We continue to add to our collection to document the coronavirus pandemic in Goodhue County.

6. **Increased Funding by the City of Red Wing to maintain the History Center:** Since the loss of our maintenance supervisor, the City of Red Wing has stepped up and budgeted heavily for ongoing maintenance and capital improvements to our facility. We are working on plans for future improvements that would be our responsibility according to the lease agreement. City staff has gone beyond to ensure problems are addressed and maintained at an adequate level. The following is a total amount by year of the City's contributions for maintenance and capital improvements:

2014	\$54,627.54
2015	\$59,429.22
2016	\$512,134 was budgeted for maintenance & capital improvements
2017	\$42,400 projected for maintenance <ul style="list-style-type: none"> <li>• 2016 capital improvement funds carried over to complete HVAC replacement, window replacement in old section, and storefront improvements -total of \$469,734</li> </ul>
2018	\$266,457 projected (new roof planned)
2019	\$42,400 projected (no capital improvements planned)
2020	\$42,400 projected (no capital improvements planned)
2021	\$44,600 projected (no capital improvements planned)

7. **Maintain Staffing Levels:** The Board continues to work to keep our staff salaries within the industry average for local history museums across Minnesota. Presently, we do not offer any benefits outside of disability and life insurance coverage. This puts us at a competitive disadvantage for talent with our peers across the state. In order to retain our talented staff, we need additional support to continue improving staff pay and benefits.

The Goodhue County Historical Society has worked hard to improve ourselves. This has led to more open doors throughout Goodhue County through partnerships and program opportunities. We hope you have an opportunity to visit the museum and see our current exhibit. **Spanning Centuries: Bridging the Mississippi at Red Wing Opening May 13, 2021.** Every day, thousands of people travel across the Mississippi River between Red Wing and Wisconsin. But the journey hasn't always been so easy! Learn about the evolution of Red Wing's river crossings in this upcoming exhibit.

The support of the Commissioners is vital to keeping the over 150-year tradition of preserving and collecting the history of Goodhue County.

Thank you for considering our request and for your previous support. If you have any questions, please feel free to contact me for further information.

Robin Wipperling

Executive Director

[director@goodhistory.org](mailto:director@goodhistory.org)

**Goodhue County**  
**Outside Agency Funding Request Form**

<b>Budget</b>		<b>Estimated 2022</b>	<b>Estimated 2023</b>
<b>Revenues</b>			
	Fees:	\$ 66,950	\$ 68,959
	Grants:	\$ 798,250	\$ 822,198
	State/Federal Funding:	\$ 566,500	\$ 583,495
	Other Revenue:	\$ 4,933,700	\$ 5,081,711
<b>Total Revenues:</b>		<b>\$ 6,365,400</b>	<b>\$ 6,556,362</b>
<b>Expenses</b>			
	Salaries:	\$ 1,503,800	\$ 1,548,914
	Benefits:	\$ 375,950	\$ 387,229
	Professional Services:	\$ 267,800	\$ 275,834
	Services & Charges:	\$ 112,785	\$ 116,169
	Supplies & Materials:	\$ 168,920	\$ 173,988
	Other Expenses:	\$ 3,936,145	\$ 4,054,229
	Capital:		
<b>Total Expenses:</b>		<b>\$ 6,365,400</b>	<b>\$ 6,556,362</b>
<b>Requested Funding From County:</b>			
<b>Number of Staff</b>		<b>20</b>	<b>20</b>



Goodhue County SWCD  
 104 East 3rd Ave, P.O. Box 335  
 Goodhue, MN 55027  
 651-923-5286 Ext. 4  
[www.goodhueswcd.org](http://www.goodhueswcd.org)

Andrea Benck  
 Goodhue County Administration  
 509 W 5<sup>th</sup> St.  
 Red Wing, MN 55066

Re: Outside Agency Funding Request

Andrea

Below is the Outside Agency Request Form summarizing the Goodhue County SWCD's estimated 2022 and 2023 budget. Also included is the detailed version of the 2022 budget showing grant amounts and sources, fees, services, etc.

Budget		Estimated 2022	Estimated 2023
<b>Revenues</b>			
	Fees:	\$ 7,850	\$ 8,000
	Grants: State/Fed Pass Thru	\$ 1,299,768	\$ 1,320,000
	State/Federal Funding:	\$ -	\$ -
	Other Revenue:	\$ 36,000	\$ 37,000
<b>Total Revenues:</b>		\$ 1,343,618	\$ 1,365,000
<b>Expenses</b>			
	Salaries:	\$ 423,024	\$ 431,485
	Benefits: (Employee+Supervisors)	\$ 121,328	\$ 123,755
	Professional Services: Audit	\$ 4,840	\$ 5,000
	Services & Charges/Operations:	\$ 78,439	\$ 80,008
	Supplies & Materials:Field/Office	\$ 2,956	\$ 3,500
	Other Expenses: Grants Pass Thru	\$ 1,088,438	\$ 1,100,000
	Capital: (truck)	\$ 32,500	\$ 32,500
<b>Total Expenses:</b>		\$ 1,751,525	\$ 1,776,247
<b>Requested Funding From County:</b>		\$ 415,000	\$ 425,000
<b>Number of Staff</b>		6	6

The main focus of the SWCD is to assist landowners and local units of government with soil erosion concerns, agricultural sustainability, wildlife habitat and water quality improvements, and solving a wide range of other environmental issues. The past few years Goodhue County landowners have benefited from significant grant dollars from the state and federal government to help solve many of the above mentioned concerns. Thus the large amount of pass-thru dollars. The majority of these dollars go on-the-ground; helping landowners and municipalities financially so they can pay the contractors who fix erosion and pollution problems. However, there is a limited amount of those funds that we can capture in-house to help pay for staff and office expenses which is why we are requesting the amount shown above for 2022. The 2023 estimated budget is also listed. At this time, we do not foresee any major changes to the budget from 2022 to 2023, therefore we adjusted the budget slightly to account for staffing and operational services increases.

Beau Kennedy, Goodhue SWCD District Adm. and Jeff Beckman, Goodhue SWCD Board Chairman, plan on attending the Budget Committee meeting on June 8<sup>th</sup>. We'll be available to answer any questions the committee may have regarding the proposed budget.

Sincerely,

*BK*

Beau Kennedy  
 Goodhue SWCD

## Goodhue SWCD Annual Budget CY2022

### REVENUE

#### Charges for Service

Drill Rental (No-Till)	\$9,000.00
Drill Rental (Truax)	\$1,500.00
Drone Services	\$250.00
Krimper Income	\$250.00
Seed for John Deere Drill	\$8,000.00
Survey Flags	\$100.00
Tree & Plant Program Sales	
Fertilizer Sales	\$50.00
Plant Sales	\$1,000.00
Tree Mat Sales	\$350.00
Tree Planter Rental	\$0.00
Tree Sales	\$14,000.00
Tree Shelter Sales	\$1,500.00
Total Tree & Plant Program Sales	\$16,900.00
Total Charges for Service	\$36,000.00

#### INTERGOVERNMENTAL REVENUE

County Revenue	
County Regular Allocation	\$415,000.00
Local Revenue	
Belle Creek Watershed Admin.	\$1,200.00
JPB Grant Admin.	\$10,500.00
	\$11,700.00

#### State Revenue

##### BWSR GRANTS

2022 Conservation Delivery(P22- )	\$20,054.00
2022 Water Plan	\$9,433.00
2022 Wetland Conservation Act	\$16,447.00
2022 Buffer Law	\$21,500.00
2022 CREP Outreach	\$6,000.00
2022 RIM	\$3,550.00
2021 State Cost Share	
State Cost Share-C/S	\$20,684.00
2022 State Cost Share	
2022 State Cost Share-T/A	\$5,171.00
2022 State Cost Share-C/S	\$20,684.00
	\$25,855.00
2020 Local Capacity (P20-7477)	
FY20 Local Capacity C/S	\$10,000.00
2021 Local Capacity (P21-2704)	
FY21 Local Capacity C/S	\$69,478.00
FY21 Local Capacity Equip.	\$15,000.00
FY21 Local Capacity T/A	\$0.00
	\$84,478.00
2022 Local Capacity	
2022 Local Capacity C/S	\$50,000.00
2022 Local Capacity Equip.	\$20,000.00
2022 Local Capacity T/A	\$30,000.00
	\$100,000.00
Cannon 1W1P	
Cannon 1W1P Staff Time	\$18,000.00
Cannon 1W1P - C/S	\$96,667.00
	\$114,667.00

Zumbro 1W1P	
Zumbro 1W1P Staff Time	\$15,000.00
Zumbro 1W1P C/S	\$50,000.00
Zumbro 1W1p Pass Thru	\$600,000.00
	<u>\$665,000.00</u>

RCPP Grant	
RCPP Adm \$ from JPB	\$16,000.00

Total BWSR Grants	<u>\$1,113,668.00</u>
-------------------	-----------------------

Other State Revenue

MN Ag WQ Certification Program	\$500.00
Well Nitrate Monitoring	\$1,000.00
County Feedlot Program	
Base Grant	\$54,900.00
Performance Credits	\$3,000.00
	<u>\$57,900.00</u>

319 SE Feedlot VII.

319 SE Feedlot VII PassThru	\$75,000.00
319 SE Feedlot VII Goodhue T/A	\$10,000.00
319 SE Feedlot VII Goodhue C/S	\$30,000.00
	<u>\$115,000.00</u>

Total Other St.Rev.	\$174,400.00
---------------------	--------------

Total State Revenue.	\$1,288,068.00
----------------------	----------------

Total INTERGOVERNMENTAL REVENUE	<u>\$1,714,768.00</u>
---------------------------------	-----------------------

Miscellaneous Revenue

Aquatic Invasive Species	\$300.00
Envirothon Income	\$1,750.00
Feedlot Fees (Registration)	\$2,000.00
JPB Reimbursable Income	\$1,600.00
Misc. Revenue	\$1,200.00
Wetland Fees	\$1,000.00
	<u>\$7,850.00</u>

Total Miscellaneous Revenue	\$7,850.00
-----------------------------	------------

Total Income	\$1,758,618.00
--------------	----------------

Cost of Goods Sold	\$9,500.00
--------------------	------------

Gross Profit	<u>\$1,749,118.00</u>
--------------	-----------------------

**EXPENSES**

DISTRICT OPERATIONS

Other Services and Charges

Conferences/Conventions/Meeting	\$2,990.00
Field Day/Education Expenses	\$1,000.00
Employee Misc Expenses	\$4,550.00
Vehicle/Equipment Expenses	\$7,980.00
Fees and Dues	\$12,300.00
Field Supplies	\$900.00
Insurance Expenses (MCIT)	\$11,500.00
Internet/Web/Phone Expenses	\$2,535.00
JPB Reimbursable Expenses	\$1,600.00
Misc. District OperationExpense	\$300.00
Office Expense/Supplies	\$2,056.00
PayPal Credit Card Fees	\$600.00
Postage	\$800.00
Professional Services	\$4,840.00

Rent (Office Building/Shed)	\$30,690.00
Subs/Subs/Ads	\$944.00
Supervisor Misc Expenses	\$650.00
Total Other Services and Charges	<u>\$86,235.00</u>

Personnel Services

Emp. Salary-Permanent	\$423,024.15
Employer Share-FICA	\$26,227.50
Employer Share-Medicare	\$6,133.85
Employer Share-PERA	\$31,726.81
Employer Share Superv-PERA	\$400.00
Emplr,Life,Health,Disability	\$45,200.00
Longevity Pay	\$1,290.00
Supervisors Per Diem	\$10,350.00
Total Personnel Services	<u>\$544,352.31</u>

**Total DISTRICT OPERATIONS** \$630,587.31

CAPITAL OUTLAY EXPENDITURE

Capital Outlay (Vehicle/Drill) \$32,500.00

PROJECT EXPENDITURES

County Expense

GIS Contract with County	\$8,000.00
Total County Expense	<u>\$8,000.00</u>

District Expense

Envirothon Expense	\$2,325.00
Fertilizer Expense	\$100.00
Krimper Expense	\$0.00
No-Till Drill Expense	\$1,000.00
No-Till Drill Seed Expense	\$7,000.00
Tree Expense	\$7,000.00
Plant Expense	\$750.00
Tree Mat Expense	\$250.00
Tree Shelter Expense	\$1,000.00
Truax Drill Expense	\$1,000.00
Total District Expense	<u>\$20,425.00</u>

State Expense.

2022 Conservation Delivery(P22- )	\$0.00
2022 Water Plan	\$2,000.00
2022 Wetland Conservation Act	\$500.00
2022 Buffer Law	\$0.00
2022 CREP Outreach	\$0.00
2022 RIM	\$0.00
2021 State Cost Share	
State Cost Share-C/S	\$20,684.00
2022 State Cost Share	
2022 State Cost Share-T/A	\$0.00
2022 State Cost Share-C/S	\$20,684.00
	<u>\$20,684.00</u>

2020 Local Capacity (P20-7477)



FY20 Local Capacity C/S	\$10,000.00
2021 Local Capacity (P21-2704)	
FY21 Local Capacity C/S	\$69,478.00
FY21 Local Capacity Equip.	\$15,000.00
FY21 Local Capacity T/A	\$0.00
	<u>\$84,478.00</u>
2022 Local Capacity	
2022 Local Capacity C/S	\$50,000.00
2022 Local Capacity Equip.	\$20,000.00
2022 Local Capacity T/A	\$0.00
	<u>\$70,000.00</u>
Cannon 1W1P	
Cannon 1W1P Staff Time	\$0.00
Cannon 1W1P - C/S	\$96,667.00
	<u>\$96,667.00</u>
Zumbro 1W1P	
Zumbro 1W1P Staff Time	\$0.00
Zumbro 1W1P C/S	\$50,000.00
Zumbro 1W1p Pass Thru	\$600,000.00
	<u>\$650,000.00</u>
RCPG Grant	
RCPG Adm \$ from JPB	\$0.00
MN Ag WQ Certification Program	\$0.00
Well Nitrate Monitoring	\$0.00
County Feedlot Program	
Base Grant	\$0.00
Performance Credits	\$0.00
	<u>\$0.00</u>
319 SE Feedlot VII.	
319 SE Feedlot VII PassThru	\$75,000.00
319 SE Feedlot VII Goodhue T/A	\$0.00
319 SE Feedlot VII Goodhue C/S	\$30,000.00
	<u>\$105,000.00</u>
Total State Expenses	\$1,060,013.00
<b>Total PROJECT EXPENDITURES</b>	<b>\$1,088,438.00</b>
<b>Total Expenses</b>	<b>\$1,751,525.31</b>
Net Ordinary Income	-\$2,407.31
Other Income/Expense	
Other Income	
Interest Earnings	\$4,000.00
Total Other Income	
Other Expense	
District Fund Balance Adj	\$0.00
Total Other Expense	
Net Other Income	
Net Income	\$1,592.69

**Goodhue County**  
**Outside Agency Funding Request Form**

**Goodhue County Fair**

<b>Budget</b>		<b>Estimated 2022</b>	<b>Estimated 2023</b>	
<b>Revenues</b>				
	Fees/operations	\$ 250,000	\$ 250,000	operating income
	Grants:	\$ 15,000	\$ 15,000	state grants
	State/Federal Funding:	\$ 5,000	\$ 5,000	state premium rebate
	Other Revenue:	\$ 25,000	\$ 25,000	of-season rental
<b>Total Revenues:</b>		<b>\$ 295,000</b>	<b>\$ 295,000</b>	
<b>Expenses</b>				
	Salaries:	\$ 18,500	\$ 18,500	
	Benefits:	\$ -	\$ -	
	Professional Services:	\$ 7,000	\$ 7,000	accounting and tax preparation
	Services & Charges:	\$ 24,000	\$ 24,000	utility
	Supplies & Materials:	\$ 20,000	\$ 20,000	
	Other Expenses:	\$ 185,000	\$ 187,000	fair operations
	Capital:	\$ 20,000	\$ 20,000	debt retirement
<b>Total Expenses:</b>		<b>\$ 274,500</b>	<b>\$ 276,500</b>	
<b>Requested Funding From County:</b>		<b>\$ 32,500</b>	<b>\$ 33,500</b>	
<b>Number of Staff</b>		15 volunteer directors, 1 year around PT maintenance staff		

## Goodhue County Outside Agency Funding Request Form

<b>Budget</b>		Estimated 2022	Estimated 2023
<b>Revenues</b>			
Admit / Vendor / Rent / Storage Fees:		145,000	147,000
Grants:		13,000 -	13,000 -
County / City	State/Federal Funding:	17,500 -	17,500 -
Donations / Carnival	Other Revenue:	25,000	30,000
<b>Total Revenues:</b>		<b>\$ 206,500.</b>	<b>\$ 207,500</b>
<b>Expenses</b>			
	Salaries:	0	0
	Benefits:	0	0
Contracts, Favors, Entertainment	Professional Services:	105,000	107,000
Fireworks, Adv, Oper Exp Dues	Services & Charges:	42,000	45,000
Maintenance	Supplies & Materials:	20,000	22,000
Insurance, Utilities	Other Expenses:	30,000	32,000
	Capital:		
<b>Total Expenses:</b>		<b>\$ 197,000 -</b>	<b>\$ 206,000</b>
<b>Requested Funding From County:</b>		10,000	10,000
<b>Number of Staff</b>		25	25

## Goodhue County

### Outside Agency Funding Request Form

<b>Budget</b>		<b>Estimated 2022</b>	<b>Estimated 2023</b>
<b>Revenues</b>			
	Fees:	\$ 125,000	\$ 130,000
	Grants:	\$ 2,500	\$ 2,500
	State/Federal Funding:		
	Other Revenue:	\$ 90,500	\$ 87,500
<b>Total Revenues:</b>		<b>\$ 218,000</b>	<b>\$ 220,000</b>
<b>Expenses</b>			
	Salaries:	\$ 125,000	\$ 125,000
	Benefits:	\$ 4,000	\$ 5,000
	Professional Services:	\$ 1,000	\$ 1,000
	Services & Charges:		
	Supplies & Materials:	\$ 27,000	\$ 28,000
	Other Expenses:	\$ 61,000	\$ 61,000
	Capital:		
<b>Total Expenses:</b>		<b>\$ 218,000</b>	<b>\$ 220,000</b>
<b>Requested Funding From County:</b>		<b>\$ 21,000</b>	<b>\$ 21,000</b>
<b>Number of Staff</b>		<b>5 FT</b>	<b>5 FT</b>



*Southeastern Minnesota Emergency Medical Services*

1130 ½ Seventh Street NW • Suite 201 • Rochester, MN 55901  
1-800-850-3397 • 507-536-9333 • Fax: 507-536-9337 • [www.seems.com](http://www.seems.com)

May 31, 2021

Andrea Benck  
Goodhue County Administration

Dear Ms. Benck,

Thank you for allowing us to submit an Outside Agency Funding Request to the County Budget Committee. The funding your county provides to our agency goes to educate, train and support Emergency Responders throughout our 11 County service area.

I have included our estimated budget for FY 2022; however, we have not received our budget target amounts from the State as of yet due to the Legislature not completing its work on time. What is not reflected on the budget sheet is the programs for our emergency providers that we have had to cut due to our decreases in funding over the years due to the increase of the use of seatbelts (which is a good thing!) and the decrease in Seatbelt fines due to the which is one source of our funding.

My Joint Powers Board is made up of 11 County Commissioners who are very aware of the tight budgets that each County face. There was much thought and discussion by the Commissioners about requesting the annual \$5000 in funding from each county but they came to the conclusion that our EMS providers need the services that the SE EMS provides and the Legislature continues to ignore our requests for additional funding, so at this time, requesting this amount from each county we serve will help us a great deal!

We thank you for your continued consideration of providing this funding to the SE Minnesota EMS and the emergency responders of our SE Region!

Sincerely,

Don Hauge  
Executive Director  
Southeastern Minnesota Emergency Medical Services System

## Goodhue County

### Outside Agency Funding Request Form

<b>Budget</b>		<b>Estimated 2022</b>
<b>Revenues</b>		
	Fees:	\$ 130,000
Reduction of Seatbelt fines	Grants:	\$ 118,000
	State/Federal Funding:	
	Other Revenue:	
<b>Total Revenues:</b>		<b>\$ 248,000</b>
<b>Expenses</b>		
	Salaries:	\$ 140,000
	Benefits:	\$ 10,000
Annual Program Audit	Professional Services:	\$ 4,500
Programs for EMS Services	Services & Charges:	\$ 92,000
	Supplies & Materials:	\$ 25,000
	Other Expenses:	
	Capital:	
<b>Total Expenses:</b>		<b>\$ 271,500</b>
<b>Requested Funding From County:</b>		<b>\$ 5,000</b>
<b>Number of Staff</b>	2.4 FTE's	<b>2</b>

## 2022 Semcac Senior Nutrition Request for Funding from Goodhue County

**Agency Description:** Semcac is a 501 C 3 nonprofit organization designated to provide services in the eleven counties of region Ten. Semcac administers 25+ programs which “help people to achieve or maintain independence and self-reliance through their own and community resources”. Since 1973, Semcac has operated the Senior Nutrition Program for seniors.

**Program Description:** The Semcac Senior Nutrition Program offers a well-balanced, nutritious meal service for persons that are 60 years of age or older. Our mission is to promote the independence, dignity, good health, and nutritional well-being of older persons. The “congregate” service, often referred to as Senior Dining, is provided in all eleven counties of Region X in Southeastern MN, with 4 meal sites in Goodhue County...Kenyon, Pine Island, Red Wing, and Zumbrota. The dining sites are focal points in the communities and offer seniors the opportunity to gather for a low-cost meal. The meal provides 1/3 of the Daily Dietary Recommendations and offers several special diet modifications to those needing them. It also provides a wonderful opportunity to learn about vital resources that are available to the retired community. In 2020 we served 13809 congregate meals to 369 unduplicated seniors in Goodhue County. Many of the seniors we serve are enrolled in a “Waivered” service thru DHS/Goodhue County. Currently our Program serves 11.1 % of our total meals in Goodhue County which consists of 10.5 % of the senior population of the region.

The Older American’s Act does not allow us to “charge” a fee for our service, but the diners are given the opportunity to donate what they can toward the cost of the meal. Currently our suggested donation is \$4.00 per meal, while our full meal cost is \$9.00 per meal. Client contributions are subsidized with the “other” funding that we receive. Currently about 55% of our revenue is Federal and State, 35% is client contributions, and 10% is local/other funds. EBT (SNAP- Supplemental Nutrition Assistance Program) cards are accepted. As a result of an outreach effort by program staff and the increase in Snap benefits during the pandemic we saw a 150% increase in donations made by clients using snap. These clients in the past would not have been able to make contributions for their meals without these increased benefits. Plans for 2022 include strengthening this outreach program to provide assistance to more seniors. The waived reimbursement rate (currently we are reimbursed at \$7.26/meal) does not look to be changing for 2022. It falls short of meeting our full meal cost. This requires us to secure additional “other” funding that will also “subsidize” these waived meals. Our goal is always to attempt to secure additional private and local funds so as not to have to close meal sites or cut this vital service to seniors.

**Description of clients/beneficiaries:** The Senior Nutrition Program is for the use of any person who is 60 years of age or older, regardless of race, color, gender, religion, disability, or national origin. The service targets the low-income, nutritionally at risk senior in jeopardy of nursing home or institutionalized

placement. From the client data we collect, our “typical” client is age 80 + years old (46%), female (62%), living alone (47%), and at or below 150% of poverty (61%).

**Benefits/outcomes of the Program:** Low-cost, nutritional support is a very important, yet basic need for the senior community. Nutritional neglect leads to bodily harm, which can lead to very costly medical bills. Nutritional support has always been a vital part of health care. In 2020 the average cost of one day in a Minnesota nursing home was approximately \$231. For those same dollars, Senior Nutrition can provide about 55 meals that will allow a senior to remain healthy and living in their own home. The daily socialization and volunteer opportunities provide seniors relief from loneliness, depression and suicide, and delays premature institutionalization. This service offers an effective way to help keep health care costs manageable. In a self-declared survey of our seniors at the end of 2020, 88% indicated they eat a healthier diet as the result of receiving our meals; 85% say they eat a healthier variety of foods; 79% say they have more money to spend on other necessities; and 92% indicate the service has enabled them to continue living in their own homes.

**How will the funds be used?:** These funds will be used to help offset the current rise in wages and the increase in both food and transportation. We anticipate these costs will continue to rise over the next 12-18 months.

**Impact if funding was not awarded?** If program funding was not available, the service would need to be limited. We would either limit the number of meals we could serve or the number of days we could serve.

**Projected 2022 Budget** – attached.

**Questions:** Jeff Wyant, Semcac Senior Services Director. (507) 864-8229

Semcac

PO Box 549

Rushford, MN 55971

Jeff.Wyant@semcac.org



## Semcac Senior Nutrition Budget Outside Agency Funding Request Form

<b>Budget</b>		<b>Estimated 2021</b>	<b>Estimated 2022</b>
<b>Revenues</b>			
	Fees:	\$571,878	\$409,500
	Grants:	\$41,499	\$56,880
	State/Federal Funding:	\$1,542,622	\$1,849,782
	Other Revenue:	\$374,001	\$430,855
<b>Total Revenues:</b>		\$2,530,000 -	\$2,747,017 -
<b>Expenses</b>			
	Salaries:	\$1,147,356	\$1,270,201
	Benefits:	\$298,989	\$259,074
	Professional Services:	\$39,944	\$42,281
	Services & Charges:	\$255,176	\$268,797
	Supplies & Materials:	\$757,986	\$867,029
	Other Expenses:	\$30,549	\$39,635

	Capital:	0	0
<b>Total Expenses:</b>		-\$2,530,000	-\$2,747,017
<b>Requested Funding From County:</b>	Included in above "other" revenue	\$3,000	\$5,000
<b>Number of Staff</b>		79	82



June 2, 2021

To: Ms. Andrea Benck  
Goodhue County Administration

From: Sara Kern  
HOPE Coalition

Re: Goodhue County Outside Agency Funding

Attached is HOPE Coalition's request for Goodhue County Outside agency funding and budget. We are requesting support for our emergency Goodhue County Adult Detention Center (GCADC) Housing Assessment and Release Planning services.

For additional information please contact Sara Kern at 651 388-9360 ext. 9 or [skern@hope-coalition.org](mailto:skern@hope-coalition.org).

Thank you!

## **HOPE COALITION REQUEST FOR GOODHUE COUNTY OUTSIDE AGENCY FUNDING**

HOPE Coalition provides services to approximately 1,200 clients each year. These services include a domestic violence shelter, services for survivors of sexual assault, and youth impacted by abuse or violence. In addition, we provide services to the homeless and funds to clients who are facing a financial crisis, such as a utility shut off or a need to pay for food or gas.

### **SERVICES PROVIDED**

As part of our Housing Support Services Program, our housing advocate provides services to approximately 72 detainees annually (prior to the pandemic) at the Goodhue County Adult Detention Center (GCADC). **These services are focused on emergency needs to help recently released detainees with immediate, basic needs at a critical time in their lives. They are unduplicated and unfunded elsewhere in the county.**

Services include:

**Housing/Transportation (many will be homeless on release)** – If a detainee has nowhere to stay, HOPE can provide a motel voucher for 1-2 nights (especially in winter) or assist with getting them into a boarding house, (based upon availability), as well as help with transportation to these sites. We also provide information as to which local employers will hire jobseekers with a criminal history.

If detainees have no family or friends to drive them to a location outside the county, HOPE assists with transportation to the Dorothy Day Hospitality House (homeless shelter) in Rochester and we refer them to People Ready Employment Service, a seven day a week day labor program. These clients are able to access housing and day jobs so that they can earn funds to return to their home counties. Alternately, our advocate will arrange for transportation to the Twin Cities area or other destinations via Amtrak or shuttle service, and may assist with these costs. Unfortunately, Amtrak only runs through Red Wing 3 days a week, meaning that HOPE may need to put people up in a boarding house, shelter, or hotel so that they have someplace safe to stay for a couple of nights until they can take the next train.

### **Food/Clothing and Other Basics**

Detainees often have little or no money upon release, and may need extra help until they can get assistance and otherwise move forward with their lives. If needed, the advocate can provide a detainee with food (or food voucher) and other basic necessities such as winter gloves, toiletries, and personal hygiene items.

### **Ongoing support**

The advocate may continue to provide assistance to former detainees who live in the area, including referrals and support for: employment, permanent housing, basic life necessities, and support in making positive changes in their lives. In addition, the advocate may provide post-release support to detainees who have just been released from the Goodhue County Adult Detention Center and told to walk to HOPE Coalition for assistance.

### **WHY WE SEEK GOODHUE COUNTY SUPPORT**

*A young woman was recently referred to us by a Red Wing Public Works employee. She had been released from the Goodhue County Adult Detention Center and had just a garbage bag of belongings. She had been out in the rain and was soaking wet and had trouble walking. The employee brought her to HOPE Coalition for help returning to the metro area. She tried, unsuccessfully, to reach someone who would come all the way to Red Wing to pick her up in exchange for a gas voucher from HOPE. Eventually, a HOPE staff member was able to transport her to Treasure Island where a loved one was willing to meet her. The staff member also gave her personal care items and food.*

*Over the winter, two men were released from the Goodhue County Adult Detention Center but couldn't stay in the Hope & Harbor Shelter due to recent criminal behavior. HOPE Coalition helped put them up in hotel until they could make other arrangements for a safe place to stay.*

During the pandemic, the number of people held at the Goodhue county Adult Detention Center decreased. However, we expect numbers to increase again as the pandemic recedes. Normally, due to high demand overall, our Community Care Fund (which helps community members cover basic, emergency expenses, such as food, clothing, transportation, rent, utilities, co-pays for prescriptions, etc.) would support a number of released detainees. It is not unusual for HOPE Coalition to run out of funds and not have any available for a given period of time. For this reason we request \$5,000 from Goodhue County to help support this service, including staff time, non-salary related expenses, and costs for a client's personal expenses.

We deliver important services to the county that no other agency in the county provides:

- For Goodhue County resident detainees, we provide services that assist them with getting back on their feet, becoming productive members of society, and contributing to the County's economy, thus reducing recidivism rates;
- For detainees from outside Goodhue County, Hope assists them to return to their home counties, thereby preventing a potential drain on County resources post-release.

Support from the county would help to cover the costs of HOPE's Housing Assessment and Release Planning services, such as gas vouchers, train tickets, motel stays, food, personal hygiene items, the cost of the advocate's time, and transportation expenses.

Thank you for taking the time to consider this application!

**Goodhue County**  
**Outside Agency Funding Request Form**

<b>Budget</b>		<b>Estimated 2022</b>	<b>Estimated 2023</b>
<b>Revenues</b>			
	Fees:		
	Grants:	\$ 25,000	\$ 25,000
	State/Federal Funding:		
	Other Revenue:	\$ 14,000	\$ 14,000
<b>Total Revenues:</b>		\$ 39,000	\$ 39,000
<b>Expenses</b>			
	Salaries:	\$ 18,448	\$ 19,001
	Benefits:	\$ 5,486	\$ 5,651
	Professional Services:	\$ 342	\$ 342
	Services & Charges:	\$ 25	\$ 25
	Supplies & Materials:	\$ 453	\$ 453
	Other Expenses:	\$ 24,000	\$ 24,000
	Capital:	\$ 250	\$ 250
<b>Total Expenses:</b>		\$ 49,004	\$ 49,722
<b>Requested Funding From County:</b>		\$ 5,000	\$ 5,000
<b>Number of Staff</b>		<b>1.5 FTE</b>	<b>1.5 FTE</b>

To: Goodhue County Budget Committee  
From: Patty Heraty, Accountant and Buffy Beranek, Executive Director  
Date: May 25, 2021  
RE: 2022 and 2023 HRA Levy Budget Request

SEMMCHRA's mission is to enhance and strengthen communities through advocacy, collaboration and promotion of self-reliance, housing, and community development. Our goal is to continue to be a recognized advocate and leader in creating housing opportunities and community development solutions. Annually, our Board sets agency standards to ensure we realize that vision and grow our mission.

Our levy in Goodhue County is critical for continuing our programs with baseline customer service. The levy request addresses the economic and housing issues facing our federal, state, and local governments. The pandemic has continued to strain small business and non-profits. The cost of systems and staffing challenges is resulting in a "survival of the fittest" business model for those trying to obtain services. The details of our request are attached.

During these unprecedented times, keeping families housed and preserving affordable housing is critical. SEMMCHRA continues to work closely with the County Housing Study Subcommittee to develop innovation solutions to address the full continuum of housing needs. Detailed below is a summary of our programs and services in Goodhue County.

### **Section 8 – Rental Assistance**

The average number of Goodhue County households assisted from 2020 was 85 per year with an average assistance of \$5,600 per household or \$476,000 county-wide. The average household income for participants is \$14,150. Sixty-seven percent of all families served by SEMMCHRA's voucher program are on our program five years or less.

The need for rental assistance is great especially during these unprecedented times. Many landlords are not being compensated due to non-payment of rent as well as tenants moving prior to State and Federal assistance coming available, which disqualifies the landlord from assistance.

### **Public Housing, Rural Development, Low to Moderate, Senior and Market Rate Housing**

The average number of households assisted in SEMMCHRA owned properties in Goodhue County in 2020 was 105 or 210 individuals. Maintaining our existing housing stock is instrumental in preserving affordable options in Goodhue County and SEMMCHRA continues to pursue federal funding options that require county and/or city's support to accomplish preservation and affordability goals.

Recently released Federal grant money is available for leveraged investments in rural properties. SEMMCHRA will be helping communities build robust and sustainable economies by maintaining these properties through accessing these funds. The communities include Wanamingo, Lake City, Zumbrota, Cannon Falls, Goodhue, Red Wing, and Kenyon.

Maintaining high quality facilities for our properties is a priority as well. SEMMCHRA will continue to update and enhance through capital improvements through available funds on hand and through leverage as well as refinancing when and where possible.

### **Housing Rehabilitation – City of Goodhue and Dennison; Pine Island**

SEMMCHRA worked with the Cities of Goodhue, Dennison and Pine Island to secure funding to improve existing properties within these three cities. SEMMCHRA received total grant awards in the amount of \$1,122,970 from the Department of Employment and Economic Development (DEED) to preserve existing single-family homes. With the 2022 levy, we will continue single family preservation in the city of Cannon Falls.

SEMMCHRA collaborated with the Goodhue County Habitat for Humanity in 2021 to develop a rural single family rehabilitation program. Over five years, this will be a sustainable program and could rehab 40 homes. Utilization of the housing trust fund created this housing program.

### **Countryside Meadow, City of Kenyon**

Countryside Meadow in the City of Kenyon continues to build out the remaining 12 buildable lots for single family construction. Building a positive, unified local approach has been critical to this development's recent success. This development serves SEMMCHRA's highest income earners, which over 90 percent of the county residents qualify to reside in. Current 2020 income limits are \$93,100 for 1-2 family member households and \$107,065 or 3+ member households.

SEMMCHRA is currently working with for-profit developers to strategically build out this development. SEMMCHRA is working with two developers to "finalize" the build-out options for the single-family and potential twin homes building sites.

### **First Time Homebuyers, Homebuyer Education**

SEMMCHRA will continue to apply for First Time Homebuyer 30-year mortgages and provide opportunities for working families to own their own homes.

SEMMCHRA continues to utilize the housing trust funds as an avenue to assist first time homebuyers. With the recent changes to the program, we expect funds to directly assist and be fully utilized annually.

We are applying for a second round of two-year funding for the home buyer education and financial wellness training. This grant and work are extremely important during these economic times. An expansion of this program may be needed to help those in foreclosure. Our service area residents along with our program participants did not have convenient local access to these programs. This has proven to be a critical service bridge for creating financial self-sufficiency.

Please let me know if you have any questions or need additional information.

Thank You,

*Buffy J. Beranek*

Buffy J. Beranek  
Executive Director



**SEMMCHRA**  
**2022 Levy Budget Request**  
**Goodhue County**

**Total Request:           \$419,600 Total Levy Requested for 2022; Total increase of less than 2% or \$8,000 for 2023**

- *The 2022 request is a 6% increase or \$22,100 – driving factors are HECAT matching funds, new matching funds for permanent supportive housing staff, overhead expenses for staffing that was eliminated during Covid and increases to property and workers compensation expenses*
- *The estimated cost of the 2022 request to a taxpayer with a \$220,000 taxable market value is \$17.87*
- *Historical levy amounts: 2021 – \$397,480; 2020 - \$395,580; 2019 - \$401,690; 2018 - \$376,100; 2017 - \$273,990*

**Uses of Funds:**

- \$70,300 for General Fund Expenditures
  - This represents \$5,900 increase which is attributed to the allocation between the counties and the total levy overhead budget operating at an increase of 9.1% from 2021.
- \$25,000 for Community Development
  - Rental preservation and rehabilitation program for Goodhue County
  - Housing preservation grant leverage – Cannon Falls
- \$42,800 for Housing Services & Development
  - \$27,750 –Housing Development program for Goodhue County
  - \$5,050: Home Buyer Education Counseling & Training
    - 124% increase or \$2,800
    - Matching funds for \$108,000 grant leverage
    - Two-year grant/commitment 2022-2023
  - \$10,000: Permanent Supportive Housing Services Staff
    - 100% increase or \$10,000
    - Matching funds for grant leverage
- \$174,000 for existing Housing Developments
  - \$25,000 Countryside Meadow TIF - debt service reserve SBT levy
  - \$149,000 Goodhue Housing Development rental assistance and debt coverage
- \$100,000 – Housing Trust Fund
- \$7,500 – Emergency Housing for Homelessness

**Levy/Funding Additional Information:**

- Return on Levy Investment: 10 year average is \$1.00: \$3.00 or over \$1.0 million annually.
- SEMMCHRA pays property taxes to Goodhue County of approximately \$55,000 annually.

- Total HRA levy capacity is approximately \$955,618 and 44 percent of maximum is being requested.

**Goodhue County**  
**Outside Agency Funding Request Form**

<b>Budget</b>		<b>2022</b>	<b>2023</b>
<b>Revenues</b>			
	Fees:		
	Grants:		
	State/Federal Funding:		
	Other Revenue:		
<b>Total Revenues:</b>		\$ -	\$ -
<b>Expenses</b>			
a)	Salaries:	\$ 46,368	\$ 47,249
b)	Benefits:	\$ 19,692	\$ 20,066
c)	Professional Services:	\$ 5,585	\$ 5,691
d)	Services & Charges:	\$ 6,958	\$ 7,090
e)	Supplies & Materials:	\$ 21,043	\$ 21,443
f)	Other Expenses:	\$ 316,566	\$ 322,581
g)	Capital:	\$ 3,388	\$ 3,452
<b>Total Expenses:</b>		\$ 419,600	\$ 427,572
<b>Requested Funding From County:</b>		\$ 419,600	\$ 427,572
<b>Number of Staff</b>		<b>0.77</b>	<b>0.77</b>

**SEMMCHRA**  
**2022 General Overhead Budget (Levy/Program Funded)**

		2022		
		TOTAL		
		General Overhead	Levy	Program
1	Other government Revenue (a)	489,189	489,189	
2	Levy Funds Transferred to Projects (a)	(164,002)	(164,002)	
3	Investment income - unrestricted	125,810		125,810
4	Indirect Cost Reimbursement	83,525		83,525
5	Car Reimbursement	13,752		13,752
6	Copy Reimbursement	14,959		14,959
7	Subordination Fees	1,030		1,030
8	Recording Fees	30		30
9	Admin Fees	17,000		17,000
10	Investment income - restricted	2,102		2,102
11	Administrative salaries	(100,351)	(61,716)	(38,635)
12	Audit	(5,960)	(3,665)	(2,295)
13	Marketing	(246)	(151)	(95)
14	Employee benefit contributions - administrative	(56,524)	(34,762)	(21,762)
15	Telephone	(1,480)	(910)	(570)
16	Internet	(2,086)	(1,283)	(803)
17	Sundry	(1,592)	(979)	(613)
18	Other Admin. Expenses	(0)	(0)	(0)
19	Copies	(4,929)	(3,031)	(1,898)
20	Office Supplies	(8,500)	(5,228)	(3,273)
21	Printing Expense	(1,793)	(1,103)	(690)
22	Postage	(3,500)	(2,153)	(1,348)
23	Computer software	(676)	(416)	(260)
24	Software Maintenance Contract	(1,529)	(940)	(589)
25	Legal Expense	(10,636)	(6,541)	(4,095)
26	Staff Training Travel	(10,020)	(6,162)	(3,858)
27	Other	(798)	(491)	(307)
28	Water	(612)	(376)	(236)
29	Electricity	(3,101)	(1,907)	(1,194)
30	Gas	(646)	(397)	(249)
31	Ordinary maintenance and operations - materials and other	(2,874)	(1,768)	(1,106)
32	Protective services - other contract costs	(217)	(133)	(84)
33	Protective services - other	(2,723)	(1,675)	(1,048)
34	Property Insurance	(7,016)	(4,315)	(2,701)
35	Liability Insurance	(3,935)	(2,420)	(1,515)
36	Workmen's Compensation	(13,519)	(8,314)	(5,205)
37	All other Insurance	(2,738)	(1,684)	(1,054)
38	Travel Mileage	(751)	(462)	(289)
39	Maint. Mileage	(170)	(104)	(65)
40	Travel Misc Travel Exp	(39)	(24)	(15)
41	Travel Meals	-	-	-
42	Travel Per Diem - Board Meeting	(8,100)	(8,100)	-
43	Travel Mileage Board Meeting	(4,700)	(4,700)	-
44	Travel Lodging	-	-	-
45	Advertising	(1,000)	(615)	(385)
46	Memberships & Subscriptions	(3,086)	(1,898)	(1,188)
47	Computer Support Services	(12,500)	(7,688)	(4,813)
48	Property Taxes	(1)	(1)	(0)
49	Interest of Mortgage (or Bonds) Payable	(208)	(208)	-
50	Ordinary Maintenance and Operations Contracts - Garbage and Trash Remo	(1,827)	(1,124)	(703)
51	Ordinary Maintenance and Operations Contracts - Landscape & Grounds Co	(1,079)	(664)	(415)
52	Ordinary Maintenance and Operations Contracts - Extermination Contracts	(270)	(166)	(104)
53	Ordinary Maintenance and Operations Contracts - Routine Maintenance Cor	(4,189)	(2,576)	(1,613)
54	Ordinary Maintenance and Operations Contracts - Misc Contracts	(1,762)	(1,084)	(744)

**55 CASH AVAILABLE FROM OPERATIONS**

		<b>290,582</b>	<b>140,139</b>	<b>150,443</b>
56 Principal Bond Payment		(27,443)	(16,878)	(10,566)
57 Interest Income Accrual to Cash Adj (TIFs)		(125,810)		(125,810)
58 WEB TIF DSR Reserve Transfer Out of Operations	(a)	(50,000)	(50,000)	-
59 SF TIF DSR Reserve Transfer Out of Operations	(a)	(25,000)	(25,000)	-
60 CSM TIF DSR Reserve Transfer Out of Operations	(a)	(25,000)	(25,000)	-
61 Voucher Program Shortfall Funding		(20,450)	(12,500)	(7,950)
62 Capital Reserve Transfers		(17,500)	(10,763)	(6,738)
<b>63 CASH USED FOR FINANCING &amp; RESERVES</b>		<b>(291,203)</b>	<b>(140,140)</b>	<b>(151,063)</b>

**64 BUDGETED CASH FLOW**

	<b>(621)</b>	<b>(1)</b>	<b>(620)</b>
--	--------------	------------	--------------

**65 Total Expenses/Levy Funded/Program Funded**

	<b>\$ (358,140)</b>	<b>\$ (225,188)</b>	<b>\$ (133,019)</b>
--	---------------------	---------------------	---------------------

NOTES:

(a) NET General Fund Levy Allocation (rounded):

		2022	2021
Dodge	21.8%	49,085	45,000
Goodhue	31.2%	70,284	64,400
Wabasha	22.5%	50,710	46,500
Winona	24.5%	55,109	50,500

**MAXIMUM LEVY CAPACITY - COUNTY**

	<u>Taxable Market Value *</u>	<u>Max HRA Levy</u>	<u>SEMMCHRA Total Request</u>
Dodge	3,047,260,400	563,743	54,135
Goodhue	5,165,503,300	955,618	419,584
Wabasha	3,281,447,200	607,068	125,760
Winona	3,332,353,700	616,485	120,159
	16,162,585,400		

**MAXIMUM LEVY CAPACITY - RESIDENTIAL**

Dodge	220,000	40.70	3.91
Goodhue	220,000	40.70	17.87
Wabasha	220,000	40.70	8.43
Winona	220,000	40.70	7.93

**RESOLUTION NO. \_\_\_\_\_**

**RESOLUTION APPROVING PRELIMINARY SPECIAL BENEFIT TAX LEVY OF  
SOUTHEASTERN MINNESOTA MULTI-COUNTY HOUSING AND REDEVELOPMENT  
AUTHORITY PURSUANT TO MINNESOTA STATUTES, SECTION 469.033, SUBD. 6, AND  
APPROVING A BUDGET FOR FISCAL YEAR 2022.**

**WHEREAS**, the Southeastern Minnesota Multi-County Housing and Redevelopment Authority (the "Authority") was created by action of the Boards of Commissioners of Dodge, Goodhue, Wabasha and Goodhue Counties (collectively referred to as the "Counties") pursuant to Minnesota Statutes, Section 469.004; and

**WHEREAS**, pursuant to such action on the part of the Counties and Minnesota Statutes, Sections 469.001 to 469.047 (the "Act"), the Authority was granted all of the same functions, rights, powers, duties, privileges, immunities and limitations as are provided for housing and redevelopment authorities created for cities under the Act; and

**WHEREAS**, Section 469.033, subd. 6, of the Act permits the Authority to levy and collect a special benefit tax of up to .0185% of taxable market value upon all taxable property, both real and personal, within the Authority's area of operation; and

**WHEREAS**, the Authority has requested that the Board of Commissioners of Goodhue County approve the levy of such a preliminary special benefit tax in the amount of \$419,600.00 to be levied upon all taxable market value of taxable property within the Authority's area of operation contained within Goodhue County; and

**WHEREAS**, the Board of Commissioners of Goodhue County has considered such request by the Authority and believes that consenting to such a preliminary special benefit tax levy by the Authority is in the best interests of Goodhue County and its residents; and

**WHEREAS**, the Authority is also required pursuant to Section 469.033, subd. 6, of the Act to, in connection with the levy of such a special benefit tax, formulate and file a budget in accordance with the budget procedures of the Counties in the same manner as required of executive departments of the Counties and the amount of the tax levy for the following year shall be based upon that budget and approved by the Counties; and

**WHEREAS**, the Authority has presented to the Board of Commissioners of Goodhue County a copy of a proposed budget for its operations for fiscal year 2022.

**NOW, THEREFORE**, be it resolved by the Board of Commissioners of Goodhue County as follows:

Section 1. That the budget for fiscal year 2022 for the operations of the Authority as presented for consideration by the Board of Commissioners of Goodhue County is hereby in all respects approved.

Section 2. That the levy of a preliminary special benefit tax pursuant to Minnesota Statutes, Section 469.033, subd. 6, is hereby consented to with respect to taxes payable in calendar year 2022 in the amount of \$419,600.00 to be levied upon all taxable market value of taxable property within the Authority's area of operation within Goodhue County.

The above resolution was adopted this \_\_\_\_\_ day of \_\_\_\_\_, 2021.

GOODHUE COUNTY BOARD OF COMMISSIONERS

---

Brad Anderson  
Board Chair

---

Attest:

Scott Arneson  
County Administrator

## Benck, Andrea

---

**From:** Ryland Eichhorst <oronocomayor@gmail.com>  
**Sent:** Wednesday, June 2, 2021 4:20 PM  
**To:** Benck, Andrea  
**Cc:** Brett Ostby; Mark Miller; Brian Morgan; Andy Masterpole; Kennedy, Beau; Jerilyn Horton  
**Subject:** Re: FW: 2022-2023 Goodhue County Funding Requests  
**Attachments:** Goodhue 2022 Budget Request for ZRRWT - Outside Agency Request.xlsx; ZWT stakeholder meeting minutes - 10.29.20 (1).docx; ZRRWTmasterPlanestimatedScopeFees-Rev A.docx; Zumbro River Regional Water Trail - Agenda - County Rep Mtg, 29 Oct 20.docx; ZWT Preliminary Map-compressed.pdf

### External Email - Use caution opening links or attachments!

Andrea,

Thank you for sending the Funding Request Form for the Goodhue County Commissioners review on June 8, 2021.

I have attached a budget request form for \$9,000 from Goodhue County Commissioners. Goodhue County has appropriated \$5,000 in December for the Zumbro River Regional Water Trail (ZRRWT) - Master Development Plan. In 2020, it was determined that each of the four counties that help make up the Zumbro River One Plan would contribute \$14,000 towards SEH Engineering in developing the ZRRWT Master Development Plan. Therefore, the remaining balance of \$14,000 commitment of \$9,000 is being requested from Goodhue County.

The ZRRWT Master Development Plan will ultimately be submitted to the Greater Minnesota Regional Parks Commission (GMRPTC) for evaluation and approval. Upon approval from the Commission, the plan will be in a position to submit plans and requests from the State Legacy Fund to support improving amenities and improvements for the Water Trail. A Survey to solicit feedback from the Public in the four counties will be forthcoming soon.

I have attached October 29, 2020, ZRRWT agenda and meeting notes outlining the Master Development Plan agenda for 2020 and 2021. Because of COVID and other issues, the plan has not stretched out to be a 2021 and 2022 project. I have also attached the Estimated Scope and Fees for SEH Engineering to develop the ZRRWT Master Plan Development for the four counties - Dodge, Goodhue, Olmsted, and Wabasha to participate in. The project covers (11) cities and (4) Counties. A preliminary draft of the map highlights the ZRRWT counties and cities is attached.

Representatives Wayne King, Parks Supervisor from Pine Island, Dylan Armsted, although new to the ZRRWT Committee, Zumbrota Community Economic Developer are the two City contacts in Goodhue County. Beau Kennedy, Goodhue County Water Planer. and SCWD representative the Zumbro One Plan has been involved with the ZRRWT County representative meetings over the past year also.

We appreciate Goodhue consideration for supporting this worthwhile project

Please let me know if you have any additional questions or if a time is required for me to be on the June 8 call.

Thank you.



September 2, 2020

**Zumbro River Regional Water Trail Master Plan - Estimated Scope and Fees, 2020 & 2021**

Submitted by SEH – Andy Masterpole and Mark Miller

**2020 - Virtual Public Engagement:**

**Survey Gizmo** (similar to Polco) –

- SEH can use that free of charge because of our corporate account
- Labor to prepare questions (no maps), monitor, summarize data and review with client - **\$2400**

**WikkiMapping** –

- **\$350** one time set up fee
- Labor to prepare maps, drop pins, monitor, summarize and review data with client - **\$2200**

**Project Website** –

- **\$164/year**
- Labor to set up initial site with basic content, coordinate with client - **\$950**

**Total:** \$2,400 + \$350 + \$2,200 + \$164 + \$950 = **\$6064**

**Other possible work to be done in 2020** (through Dec. 31, 2020)

- Master plan working group meeting #1- preparation, attendance and summary
- Four County-wide Virtual Open Houses – Project input
- Master plan – complete inventory, regional context and public vision elements

**Total Labor:** **\$17,600**

**2020 Total;** **\$6,064 + \$17,600 = \$23,664**

**Oronoco submitted a request for People’s Energy Cooperative, Operation Round Up Grant for \$4,500.00**

**IF granted, \$23,664 - \$4,500 = \$19,164 Total / 4 Counties (Dodge, Goodhue, Olmsted, Wabasha) = \$4,791 each**

+++++

**2021 - Possible work to be completed:**

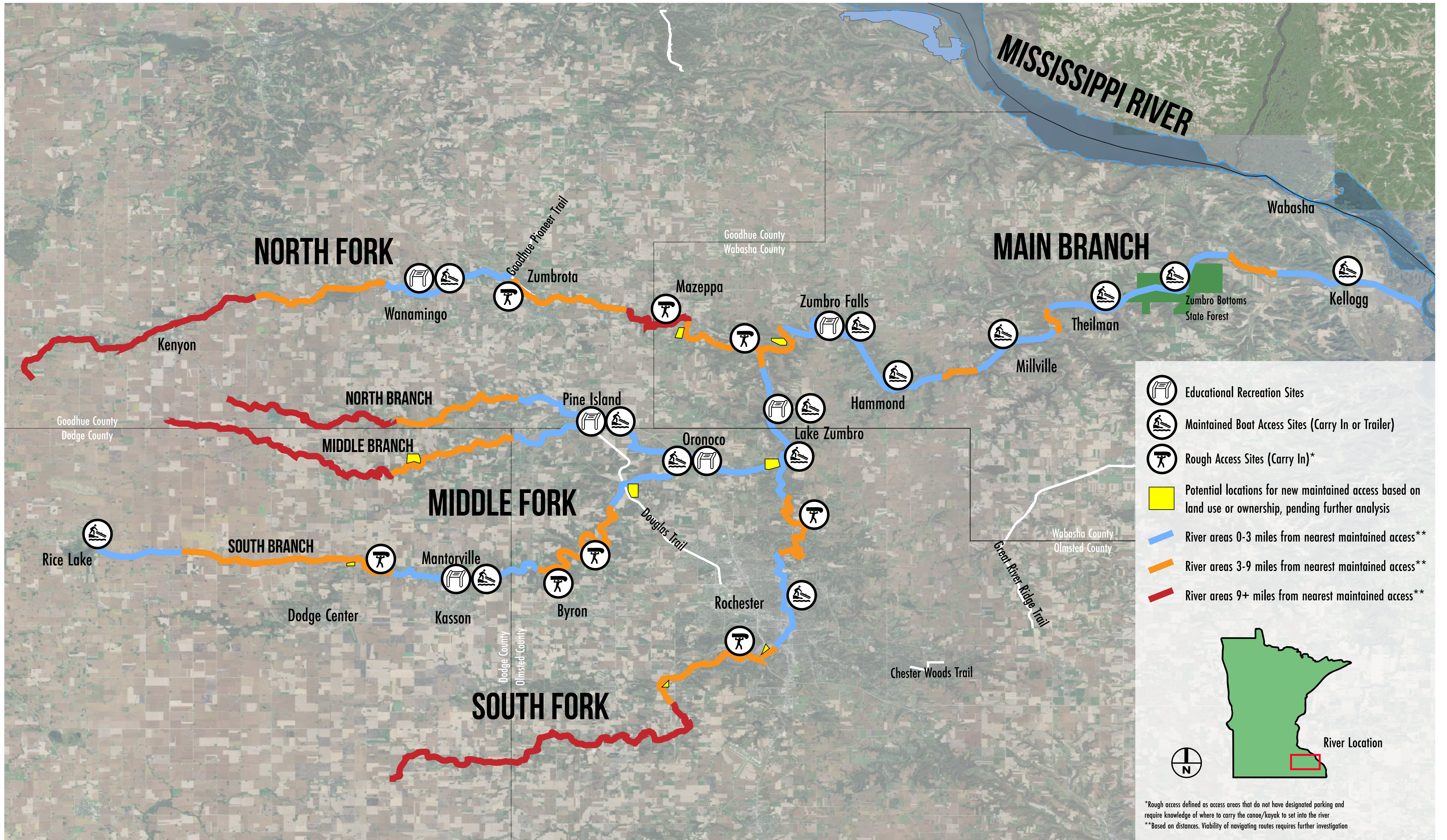
- Master Plan working group meeting #2
- Master Plan working group meeting #3
- Master plan- concepts plans, implementation plans, ecological plans, programming plan, management plan, research plan
- Four County-wide Open Houses – Review draft master plan
- Master Plan working group meeting #4

**Total Labor:** **\$34,800**

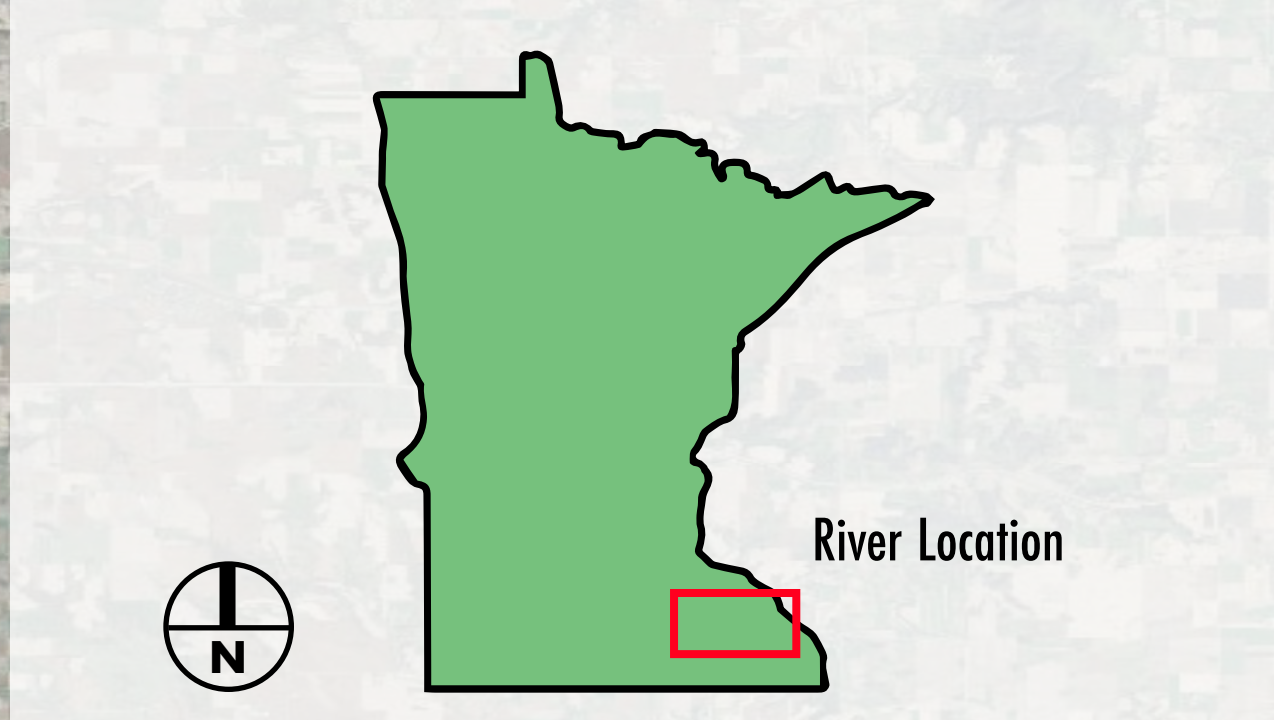
**Each County (Dodge, Goodhue, Olmsted, Wabasha) = \$34,800 / 4 counties = \$8,700 each**

+++++

**Project Total: \$58,464**



- Educational Recreation Sites
- Maintained Boat Access Sites (Carry In or Trailer)
- Rough Access Sites (Carry In)\*
- Potential locations for new maintained access based on land use or ownership, pending further analysis
- River areas 0-3 miles from nearest maintained access\*\*
- River areas 3-9 miles from nearest maintained access\*\*
- River areas 9+ miles from nearest maintained access\*\*



\*Rough access defined as access areas that do not have designated parking and require knowledge of where to carry the canoe/kayak to set into the river  
 \*\*Based on distances. Viability of navigating routes requires further investigation

Information gathered from State and County GIS, MN DNR and David J Lind's Canoeing the Driftless and not fully field verified

# ZUMBRO RIVER WATER TRAIL NAVIGATION ANALYSIS

## **Zumbro River Regional Water Trail (ZRRWT) Meeting**

### **Agenda, October 29, 8 AM Zoom Meeting**

**Attendees: Guiding Committee and County Representatives – Dodge, Goodhue, Olmsted & Wabasha**

- a) Review Oct 5 email information**
  - a. Zumbro One meeting with Skip Langer and Caitlin Brady, August 12**
  - b. Cost breakdown prepared by SEH**
    - i. Share status of People’s Energy Cooperative Operation Round Up - \$4,600 request**
  - c. Joint Powers Agreements**
  - d. Next steps for November and December**
  - e. Updating Shareholders with status and going forward**
  - f. Other Comments**

### **Master Plan-**

- Completing all master plan components - inventory, regional context, public vision, concept plans, implementation plan, ecological plan, programming plan, management plan and research plan.
- This includes all narrative and required maps. Completed and submitted via GMRPTC online master plan portal.
- The challenge with this master plan will be it's scale. A typical master plan is for one specific area or park. This is for an entire region, so multiple concept plans or graphics will need to be created to address potential access locations and connections.

**Fee: \$20-\$25,000**

### **Public Engagement-**

Includes the following meetings:

- Master Plan Working Group Kick-Off Meeting
- Four Project Kick-Off Open Houses- Goodhue County, Wabasha County, Dodge County and Olmsted County - prep, plans, agendas, visioning questions/tasks, presentation, summary
- Working Group Meeting #2 - Prep, plans, agenda, attendance and summary
- Working Group Meeting #3 - Prep, plans, agenda, attendance and summary
- Four Review Draft Master Plan Open Houses - Goodhue County, Wabasha County, Dodge County and Olmsted County - prep, plans, agenda, presentation, summary
- Working Group Meeting #4 - Prep, plans, agenda, attendance summary
- On-line Polco Survey - prep, set-up, summary
- Wiki-Mapping Data Collection - prep, set-up, summary

**Fee: \$30-35,000**

**Total fees: \$50-60,000**

+++++

- b) Consider breakdown of 2020 costs and 2021 budget request.**
- c) Develop outline for Master Working Group meeting objectives**
- d) Develop outline for feedback from Open House**
- e) Parking lot issues (Open items for follow-up)....**

**f) Other issues/items to discuss**

**Regards,**

**Ryland Eichhorst / Andy Masterpole**

## **ZUMBRO RIVER REGIONAL WATER TRAIL STAKEHOLDER GROUP**

Meeting Minutes – October 29, 2020

Attendees:

Mark Engel, Olmsted County

Ryland Eichhorst, City of Oronoco

Beau Kennedy, Goodhue County

Andy Masterpole, SEH

Melissa Devetter, Dodge County

Mark Miller, SEH

Absent: Brian Buhmann, Wahasha County, Brett Osby, Daguna Consulting

An update on the meeting with Zumbro One Watershed was provided. The survey they did last year ranked Recreation as #9, so they can only support the project in spirit and not financially.

Ryland stated that our group has received an Operation Round Up Grant from People's Energy Cooperative Trust. It was for \$4600 and the money must be spent within one year. The money will be used to pay SEH to do on-line community engagement. A Survey Gizmo and WikkiMapping will be completed.

Beau asked if we could apply for future grants from this organization. Ryland stated we could but there are no guarantees we would get additional funding.

Mark Engel stated that he talked to the County Administrator and that she was going to add a budget line item for \$14,000 for the ZRRWT master plan in next year's Olmsted County budget. There are no guarantees it will stay in the final budget and get funded.

Beau said he will have a similar conversation with his county administrator and ask that they budget that same amount in next year's budget.

Melissa said she talked to her board last week. They haven't said yes and they haven't said no. Their concern was the potential Joint Powers Board and the long term costs associated with that. She agree to ask her administrator to add a similar amount to their county budget for next year.

Mark Engel explained how the GMRPTC application process is a competitive application. Matching funds often give you a better chance of receiving funding. A joint powers agreement would also be important.

Mark Engel talked to Skip Langer of Zumbro One Watershed. That group is trying to get a joint powers agreement established. Beau said that Goodhue County is the fiscal agent for the Zumbro One Watershed group.

Olmsted County wants to avoid a joint powers board where dues are paid annually.

Beau stated that a MOU has been created with Zumbro One Watershed and it would route funds through one of the existing agencies.

These county boards don't want another entity and annual fees.

Beau stated that the best way to get projects done is to have a sole entity to implement the plan.

Ryland stated that Cannon Falls Trail has a joint powers board. There is currently no consensus on how a joint power board/agreement would work.

Beau stated that this is all the more reason to have Zumbro One Watershed be the ONE joint powers board/agreement. He said that Zumbro One Watershed is having difficulty forming an entity that would funnel millions of dollars from St. Paul. The MOU they are working on now usually runs for one to two years.

Mark Miller suggested that we should get on the Zumbro One Watershed agenda for December and to discuss the idea of this group becoming a sub-entity of their group. Andy to contact Skip, but talk to Ryland first.

A discussion ensued on the Moon Property along the Zumbro River. This property recently went up for sale and the owners would like to see it become a park or preserved open space. It is 760 acres and it would have a potential public access point in Genoa. Mark outlined how the property does have Decorah Edge soils. Also there would be land needed for shoreland and floodplain protection. The property also has trail opportunities. It is not directly connected to Oxbow Park, but it is very close. Beau suggested that it could be used for wetland banking as well. Mark stated that the County currently does not have the funds available to purchase the property but they will continue to discuss it.

Final discussion on going ahead with the survey work at this time: everyone stated that if helps move the overall plan forward, then we should do it now.

Ryland suggested we have our next meeting in mid to late December.

Respectfully,

Andy Masterpole, SEH