



# GOODHUE COUNTY MINNESOTA

TO EFFECTIVELY PROMOTE THE SAFETY, HEALTH, AND WELL-BEING OF OUR RESIDENTS

## COMMITTEE OF THE WHOLE AGENDA COUNTY BOARD ROOM GOVERNMENT CENTER RED WING, MN

JANUARY 18, 2022  
10:00 A.M.

### Virtual Meeting Notice

Due to concerns surrounding the spread of COVID-19, it has been determined that in-person meetings or meetings conducted under Minn. Stat. 13D.02 a are not practical or prudent. Therefore, meetings that are governed by the Open Meeting Law will temporarily be conducted by telephone or other electronic means pursuant to Minn. Stat. 13D.021.

The Goodhue County Board of Commissioners will be conducting a Committee of the Whole meeting pursuant to this section on January 18, 2022 at 10:00 a.m. in the County Board Room. The County Administrator and/or County Attorney will be present at the meeting location. All County Commissioners attending will appear by telephone or other electronic means. The public may monitor the meeting from a remote site by logging into <https://global.gotomeeting.com/join/876826101> or calling 1 877 309 2073 OR 1 646 749 3129 any time during the meeting. Access Code: 876-826-101

### 1. 2022 Redistricting Preliminary Option Presentation

Documents:

[2022-1-18 Redistricting Preliminary Options Memo and Presentation.pdf](#)



Brian J. Anderson  
Goodhue County Auditor/Treasurer  
Goodhue County Finance & Taxpayer Services

*Brian.anderson@co.goodhue.mn.us*  
509 W. Fifth St.  
Red Wing, MN 55066  
Phone (651) 385-3032

TO: County Board of Commissioners  
FROM: Brian J. Anderson, Goodhue County Auditor/Treasurer  
SUBJECT: 2022 Redistricting Preliminary Option Presentation  
DATE: January 18, 2022

---

**Background:**

Every ten years following the U.S. Census, the Minnesota Secretary of State's Office is in charge of providing redistricting guidance as per MN State Statute. There is an order in which redistricting must be completed by the various jurisdictions, and for counties the completion date is April 26, 2022. This is 80 days from when the Legislature approves their redistricting plan, after the cities have approved their redistricting plan, and well before the 2022 election filing period.

**Discussion:**

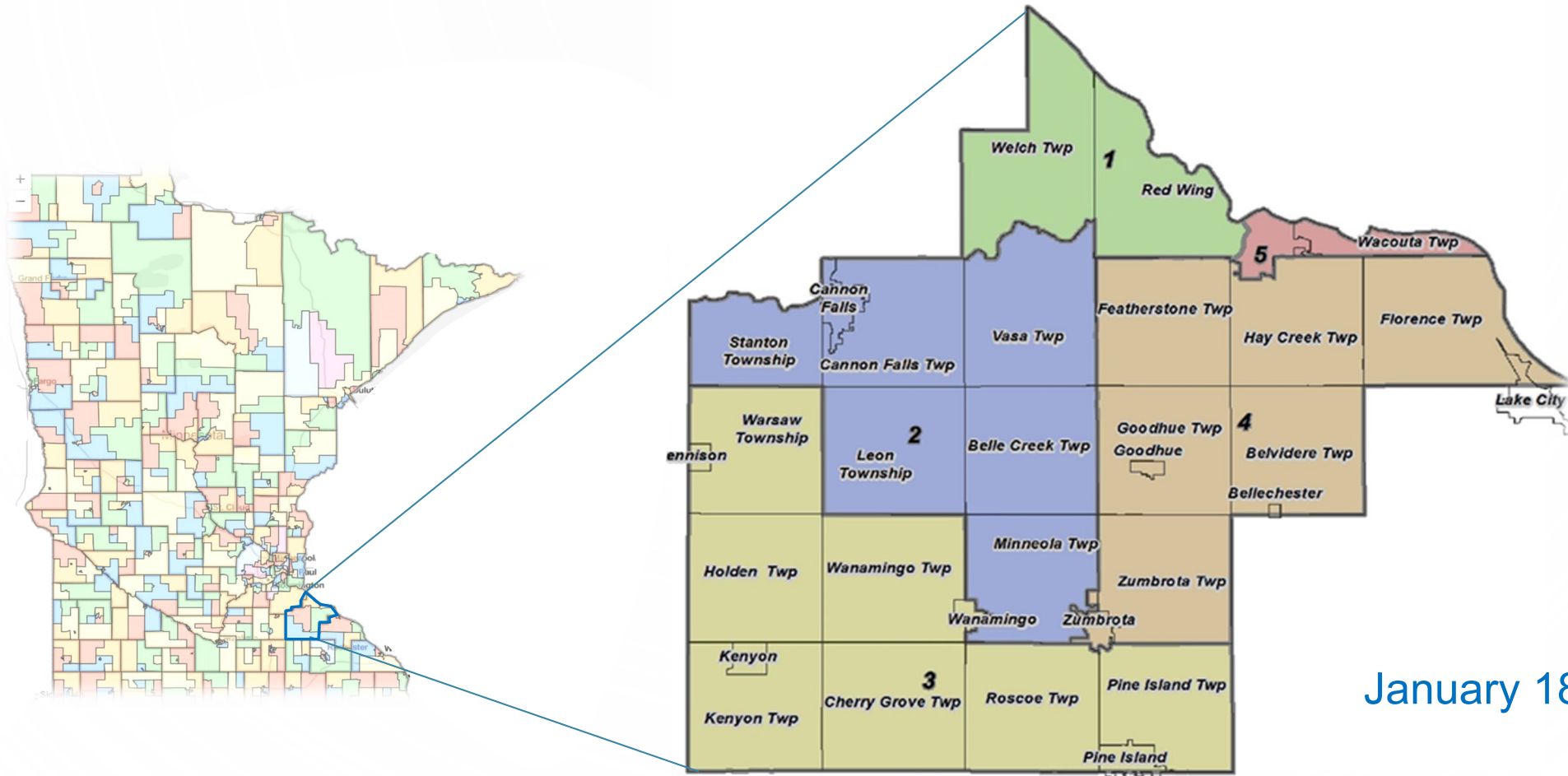
The following presentation is meant to highlight options available as you look at redrawing county commissioner district boundaries. Each governmental jurisdiction is in charge of their own redistricting, but Goodhue County will communicate and assist with the other jurisdictions throughout the whole process to ensure it goes as smooth and transparent as possible. The State is intending to release their redistricting boundaries on February 15. Staff will review the changes and update the Board accordingly. Staff has been in contact with the City of Red Wing and at that time, the city did not intend to redraw their ward or precinct boundaries.

The presentation below outlines three potential options. Those are as follows:

- Option 1 – Move Featherstone from Commissioner District 4 to Commissioner District 1
- Option 2 – Move Featherstone from Commissioner District 4 to Commissioner District 2
- Option 3 – Move Featherstone from Commissioner District 4 to Commissioner District 1  
Move Dennison from Commissioner District 3 to Commissioner District 2  
Move Warsaw from Commissioner District 3 to Commissioner District 2  
Move Minneola from Commissioner District 2 to Commissioner District 3

Please take time to review the presentation, at this time staff looks for board input as to which option is more favorable. The notice of intent to redistrict will be published on March 9<sup>th</sup>. A copy of the preliminary plans will be available for public inspection in the Finance & Taxpayer Services Office. Public comment and board decision will be held at the April 5<sup>th</sup> board meeting.

# GOODHUE COUNTY 2022 REDISTRICTING



January 18, 2022

# Presentation Overview

- REDISTRICTING RECAP
- REDISTRICTING TIMELINES
- REDISTRICTING OPTIONS

# Redistricting Recap

# 10% RULE

- District populations cannot vary more than ten percent from the average for all districts in the county, unless the result forces a voting precinct to be split. (M.S. 375.025, subd. 1)

## Calculation:

- County population / by commissioner districts x 10% = Threshold
- $47,582 / 5 = 9,516$
- $9,516 \times 10\% = \mathbf{952 \text{ Threshold}}$
- All districts must be in the range of 8,565–10,468 residents

# 5% Rule

- If the commissioner's district has had a change greater than the 5% Rule, then they would have to run again in the next election.
  - County population is 47,582 with 5 commissioners
  - Average population is 9,516
  - The Threshold is  $9,516 \times 5\% = 476$

# 2020 Census Population

## Goodhue Population

- District 1            9,101
- District 2            9,345
- District 3            9,567
- District 4            10,892
- District 5            8,677

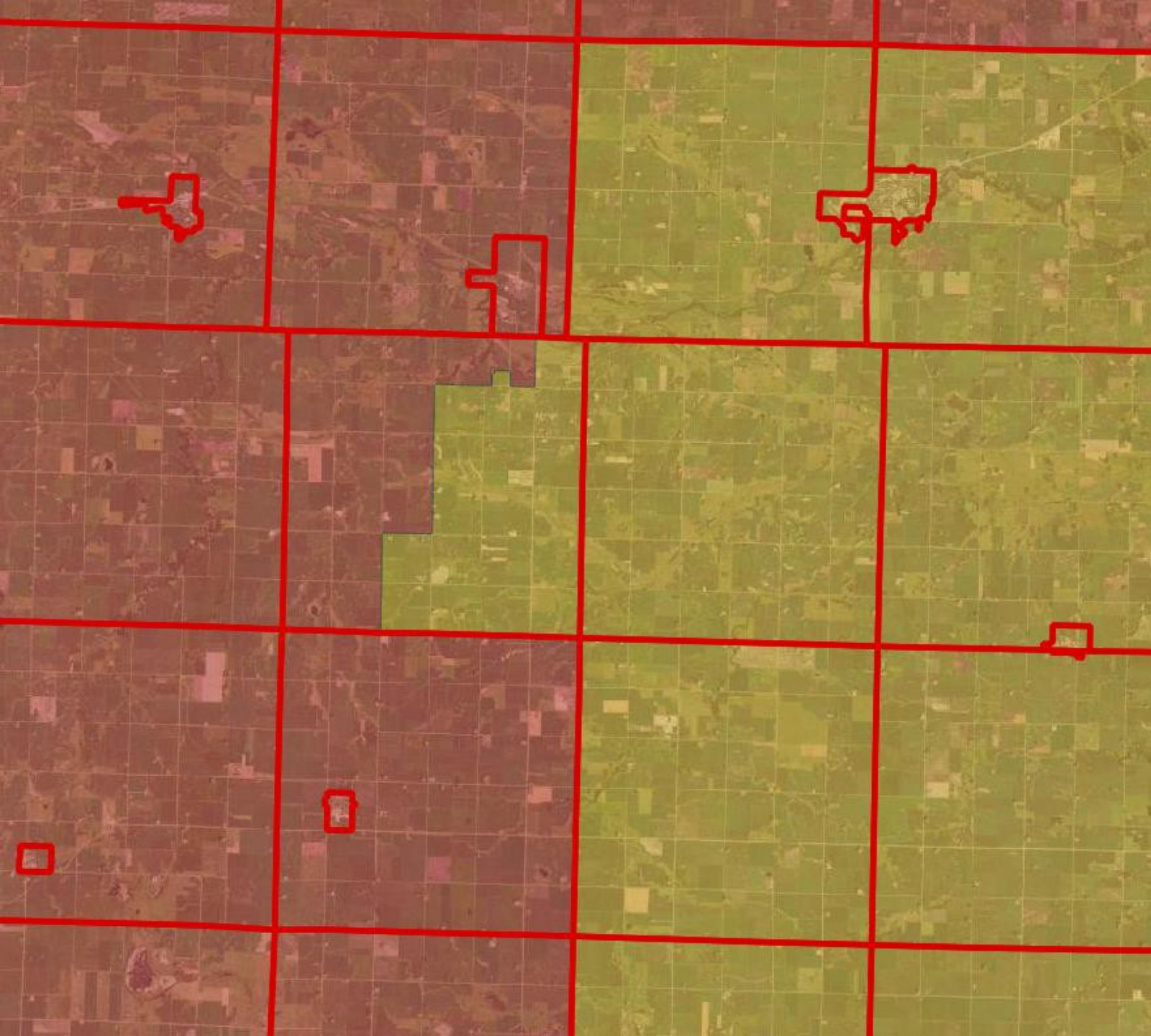
## Redistricting Parameters

- Total Pop.            47,582
- District Avg.        9,516
- 5% Threshold        476
- 10% Threshold      952
- District Range      8,565 - 10,468



# County Commissioner District Requirements

- As many Districts as Commissioners
- District bounded by precinct lines
- Contiguous territory
- Regular and compact
- 10% Rule
- 5% Rule
- Set Commissioner terms
- Plan filed with State Auditor



Congressional &  
Legislative  
boundaries  
can go anywhere

Don't need to  
follow municipal  
boundaries

If the state splits  
a precinct, our  
plan is that both  
stay in the same  
commissioner  
district

# Goodhue County Cities with Multiple Precincts

- Cannon Falls City
  - City elects members at large
- Red Wing City
  - City elects members by wards and at large
  - They have ran their population numbers
  - At this time they anticipate no changes
- Zumbrota City
  - City elects members at large

# Redistricting Timelines

# 2022 Election Timeline

February 1 <sup>st</sup>	Precinct Caucuses
February 8 <sup>th</sup>	February Uniform Election Date
<b>February 15<sup>th</sup></b>	<b>Legislative Redistricting</b> (intended deadline)
March 8 <sup>th</sup>	Township Elections
<b>March 29<sup>th</sup></b>	<b>Precinct &amp; Ward Redistricting Deadline</b>
<b>April 26<sup>th</sup></b>	<b>County &amp; Other Redistricting Deadline</b>
May 17 <sup>th</sup>	State/County Filing Period Opens
August 9 <sup>th</sup>	State Primary Election
November 8 <sup>th</sup>	State General Election

# 2022 Redistricting Timeline

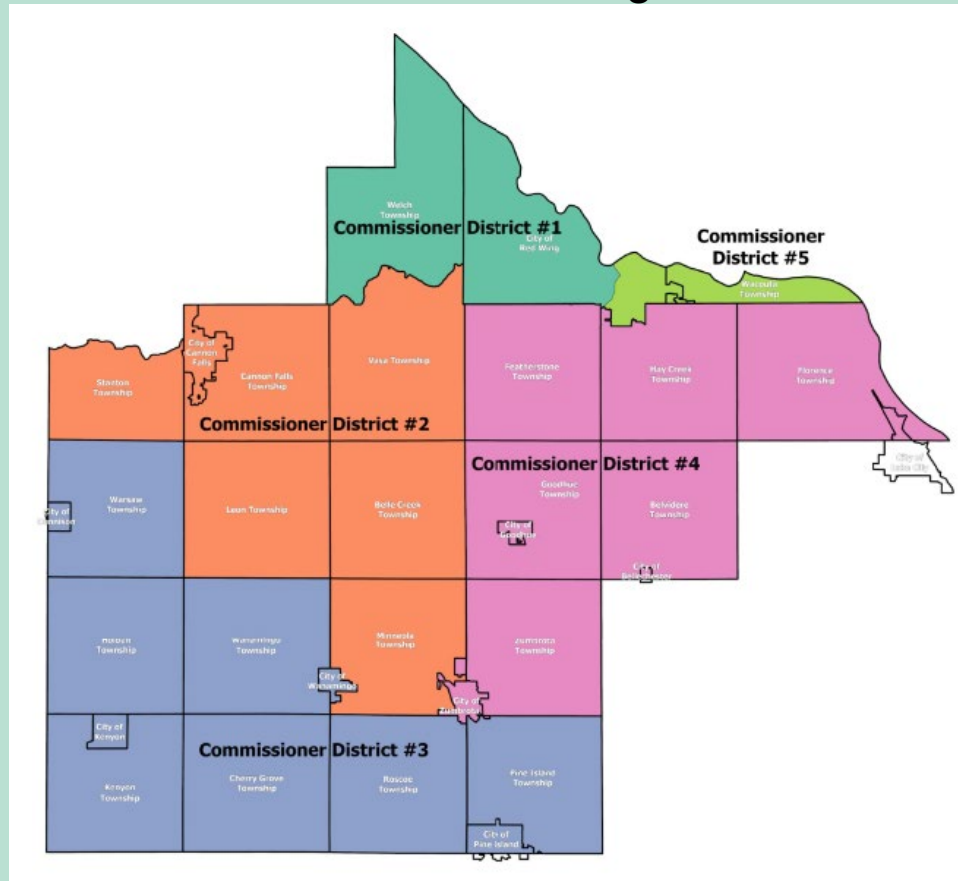
January 18 <sup>th</sup>	Preliminary Redistricting Plan Presented
<b>February 15<sup>th</sup></b>	<b>Legislative Redistricting</b> (intended deadline)
March 9 <sup>th</sup>	Notice of Intent to Redistrict is Published
March 28 <sup>th</sup>	Deadline for the Public to Submit a Plan
<b>March 29<sup>th</sup></b>	<b>Precinct &amp; Ward Redistricting Deadline</b>
April 5 <sup>th</sup>	County holds Public Comment Meeting
April 5 <sup>th</sup>	County Approves Redistricting Plan
<b>April 26<sup>th</sup></b>	<b>County &amp; Other Redistricting Deadline</b>
April 27 <sup>th</sup>	Redistricting Information is Published

# Redistricting Options

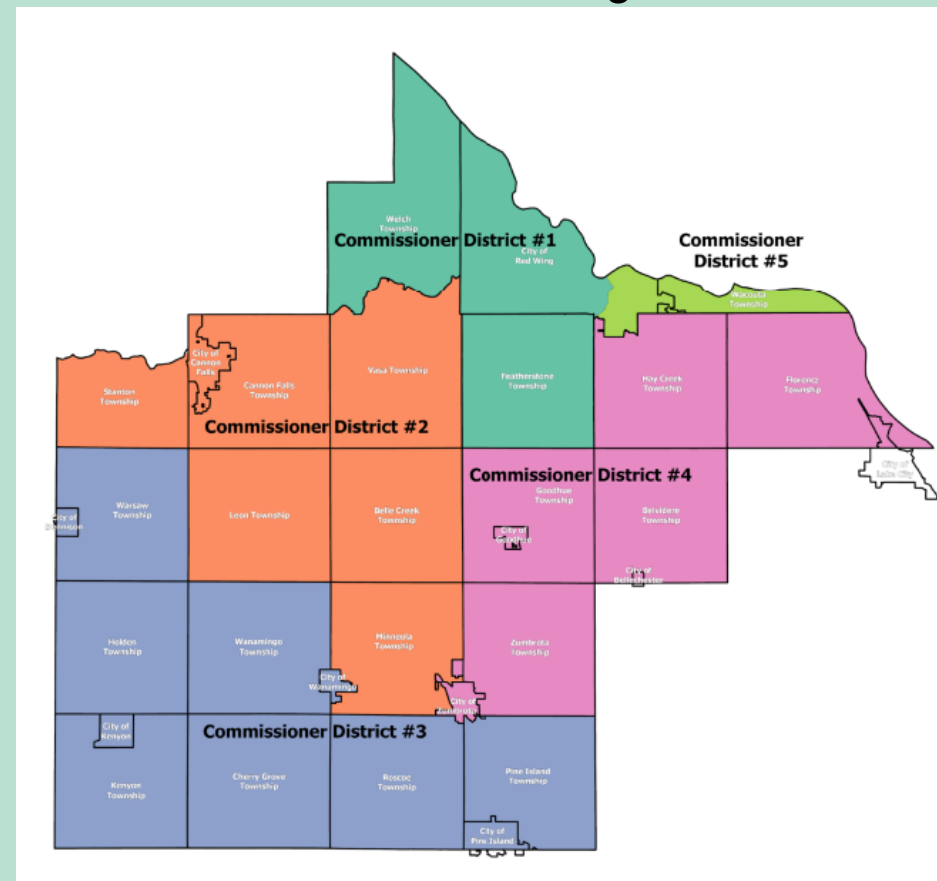
# Redistricting Option 1

Move Featherstone from Commissioner District 4 to Commissioner District 1

Before Redistricting



After Redistricting





# Redistricting Option 1 – 10% Rule

## Population Before Redistricting

- District 1 9,101
- District 2 9,345
- District 3 9,567
- District 4 10,892
- District 5 8,677

## Population After Redistricting

- **District 1 9,846**
- District 2 9,345
- District 3 9,567
- **District 4 10,147**
- District 5 8,677

10% Rule - all districts must be in the range of 8,565–10,468 residents

# Redistricting Option 1 – 5% Rule

## Commissioner District 1

- Shift in = 745      Shift out = 0      Total Shift = 745      Must run due to 5% rule

## Commissioner District 2

- Shift in = 0      Shift out = 0      Total Shift = 0      Must run as term is up

## Commissioner District 3

- Shift in = 0      Shift out = 0      Total Shift = 0

## Commissioner District 4

- Shift in = 0      Shift out = 745      Total Shift = 745      Must run as term is up

## Commissioner District 5

- Shift in = 0      Shift out = 0      Total Shift = 0

Commissioner's district that have a change greater than 5% must run again in the next election.  
In Goodhue County that number equates to 476.

# Redistricting Option 1 – Terms

## Commissioner Dist. 1 – 2 yr Term

- 2018
  - Districts 2 and 4
- 2020
  - Districts 1, 3 and 5
- 2022
  - Districts 1, 2 and 4
- 2024
  - Districts 1, 3 and 5
- 2026
  - Districts 2 and 4

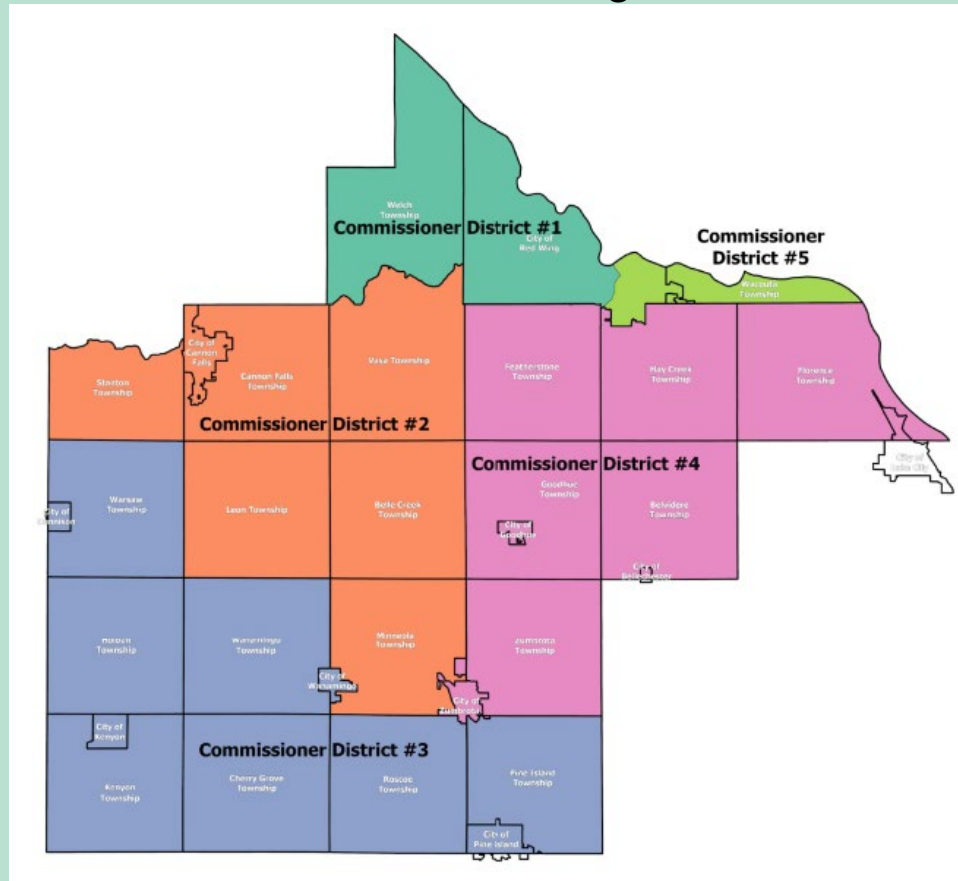
## Commissioner Dist. 1 – 4 yr Term

- 2018
  - Districts 2 and 4
- 2020
  - Districts 1, 3 and 5
- 2022
  - Districts 1, 2 and 4
- 2024
  - Districts 3 and 5
- 2026
  - Districts 1, 2 and 4

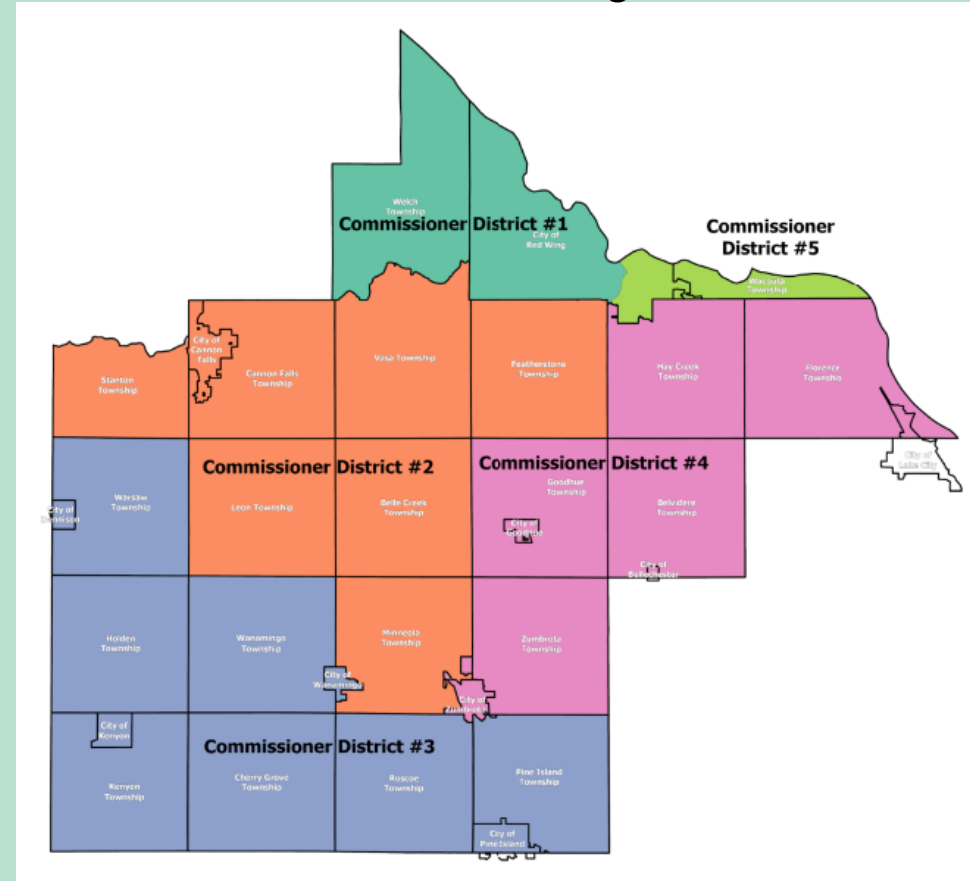
# Redistricting Option 2

Move Featherstone from Commissioner District 4 to Commissioner District 2

Before Redistricting



After Redistricting



# Redistricting Option 2 – 10% Rule

## Population Before Redistricting

- District 1                      9,101
- District 2                      9,345
- District 3                      9,567
- District 4                      10,892
- District 5                      8,677

## Population After Redistricting

- District 1                      9,101
- **District 2                      10,090**
- District 3                      9,567
- **District 4                      10,147**
- District 5                      8,677

10% Rule - all districts must be in the range of 8,565–10,468 residents

# Redistricting Option 2 – 5% Rule

## Commissioner District 1

- Shift in = 0          Shift out = 0          Total Shift = 0

## Commissioner District 2

- Shift in = 745          Shift out = 0          Total Shift = 745          Must run as term is up

## Commissioner District 3

- Shift in = 0          Shift out = 0          Total Shift = 0

## Commissioner District 4

- Shift in = 0          Shift out = 745          Total Shift = 745          Must run as term is up

## Commissioner District 5

- Shift in = 0          Shift out = 0          Total Shift = 0

Commissioner's district that have a change greater than 5% must run again in the next election.  
In Goodhue County that number equates to 476.

# Redistricting Option 2 – Terms

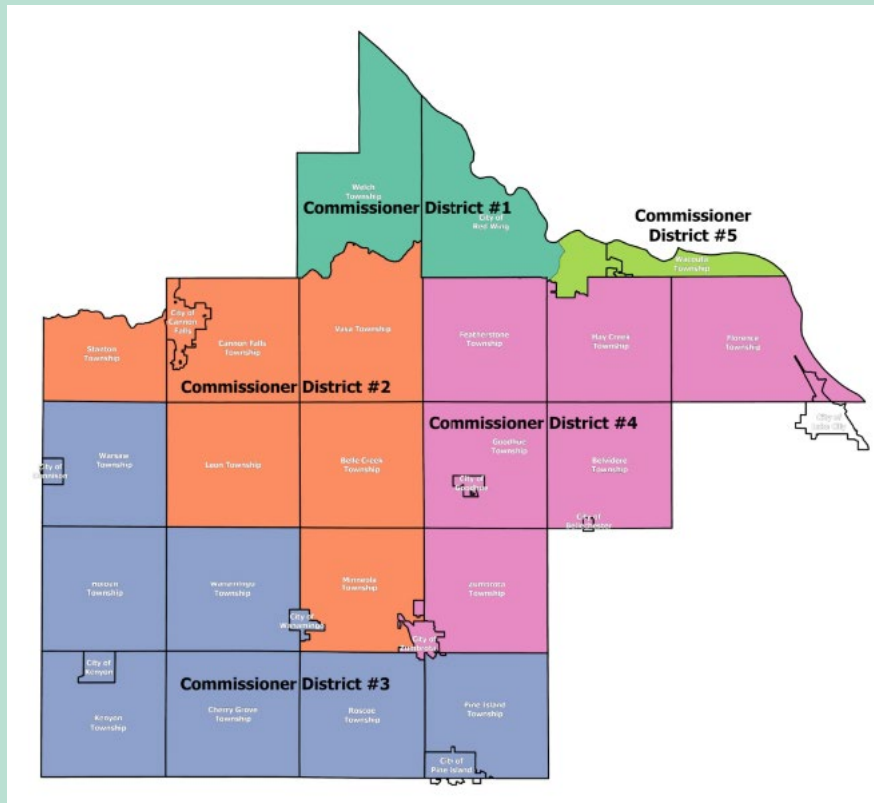
## Terms

- 2018
  - Districts 2 and 4
- 2020
  - Districts 1, 3 and 5
- 2022
  - Districts 2 and 4
- 2024
  - Districts 1, 3 and 5
- 2026
  - Districts 2 and 4

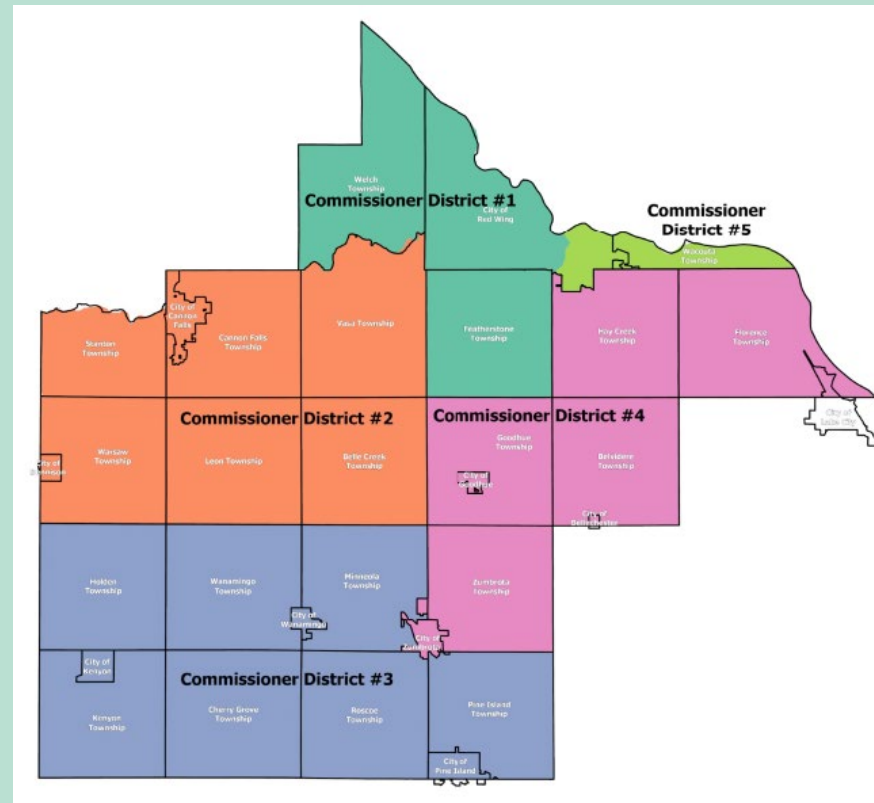
# Redistricting Option 3

- Move Featherstone from Commissioner Dist. 4 to Commissioner Dist. 1
- Move Dennison and Warsaw from Commissioner Dist. 3 to Commissioner Dist. 2
- Move Minneola from Commissioner Dist. 2 to Commissioner Dist. 3

Before Redistricting



After Redistricting





# Redistricting Option 3 – 10% Rule

## Population Before Redistricting

- District 1 9,101
- District 2 9,345
- District 3 9,567
- District 4 10,892
- District 5 8,677

## Population After Redistricting

- **District 1 9,846**
- **District 2 9,525**
- **District 3 9,387**
- **District 4 10,147**
- District 5 8,677

10% Rule - all districts must be in the range of 8,565–10,468 residents

# Redistricting Option 3 – 5% Rule

## Commissioner District 1

- Shift in = 745      Shift out = 0      Total Shift = 745      Must run due to 5% rule

## Commissioner District 2

- Shift in = 807      Shift out = 627      Total Shift = 1,434      Must run as term is up

## Commissioner District 3

- Shift in = 627      Shift out = 807      Total Shift = 1,434      Must run due to 5% rule

## Commissioner District 4

- Shift in = 0      Shift out = 745      Total Shift = 745      Must run as term is up

## Commissioner District 5

- Shift in = 0      Shift out = 0      Total Shift = 0

Commissioner's district that have a change greater than 5% must run again in the next election.  
In Goodhue County that number equates to 476.

# Redistricting Option 3 – Terms

## TERM OPTION 1

- 2018
  - Districts 2 and 4
- 2020
  - Districts 1, 3 and 5
- 2022
  - Districts 1, 2, 3 and 4
- 2024
  - Districts 1, 3 and 5
- 2026
  - Districts 2 and 4

## TERM OPTION 2

- 2018
  - Districts 2 and 4
- 2020
  - Districts 1, 3 and 5
- 2022
  - Districts 1, 2, 3 and 4
- 2024
  - Districts 3 and 5
- 2026
  - Districts 1, 2 and 4

## TERM OPTION 3

- 2018
  - Districts 2 and 4
- 2020
  - Districts 1, 3 and 5
- 2022
  - Districts 1, 2, 3 and 4
- 2024
  - Districts 1 and 5
- 2026
  - Districts 2, 3 and 4

# Redistricting Option - Review

## OPTION 1

- 2022 Commissioner Races
  - District 1
  - District 2
  - District 4

## OPTION 2

- 2022 Commissioner Races
  - District 2
  - District 4

## OPTION 3

- 2022 Commissioner Races
  - District 1
  - District 2
  - District 3
  - District 4

# Redistricting Questions & Board Direction

# Canvassing Board

- Canvassing board is made up of the county auditor, court administrator, mayor of the largest city and two county commissioners who were not candidates in the election.
  - Three members constitute a quorum.
- State Primary Election
  - Requirement: Meets the 2<sup>nd</sup> or 3<sup>rd</sup> day following the election
  - Proposed Date & Time: August 12<sup>th</sup> @ 8:30
  - **County Board Members:**
- State General Election
  - Requirement: Meets between the 3<sup>rd</sup> and 10<sup>th</sup> day following the election
  - Proposed Date & Time: November 16<sup>th</sup> @ 8:30
  - **County Board Members:**

# Redistricting Resources

## **MN Secretary of State**

[www.sos.state.mn.us/election-administration-campaigns/election-administration/redistricting/?searchTerm=redistricting](http://www.sos.state.mn.us/election-administration-campaigns/election-administration/redistricting/?searchTerm=redistricting)

## **Goodhue County**

<https://co.goodhue.mn.us/1415/Redistricting>