



GOODHUE COUNTY MINNESOTA

TO EFFECTIVELY PROMOTE THE SAFETY, HEALTH, AND WELL-BEING OF OUR RESIDENTS

COMMITTEE OF THE WHOLE AGENDA

COUNTY BOARD ROOM
GOVERNMENT CENTER
RED WING, MN

OCTOBER 4, 2022
10:15 A.M.

Virtual Option Meeting Notice

The Goodhue County Board of Commissioners will be conducting a committee of the whole meeting pursuant to Minn. Stat. 13D.02 on October 4, 2022 at 10:15 a.m. in the County Board Room. County Commissioner, Susan Betcher, will be appearing virtually from 117 College Street, South Hadley, MA 01075.

The public may attend in person or monitor the meeting from a remote site by logging into <https://global.gotomeeting.com/join/531826149> or calling 1 866 899 4679 OR 1 571 317 3116 any time during the meeting. Access Code: 531-826-149

1. Building Space Studies

Documents:

[COW 10.2022.pdf](#)

2. Byllesby Park Pavilion and Essential Services Project Update.

Documents:

[Byllesby Park Pavilion Project Update.pdf](#)



Goodhue County Building & Security Studies

Committee of the Whole 10.4.2022

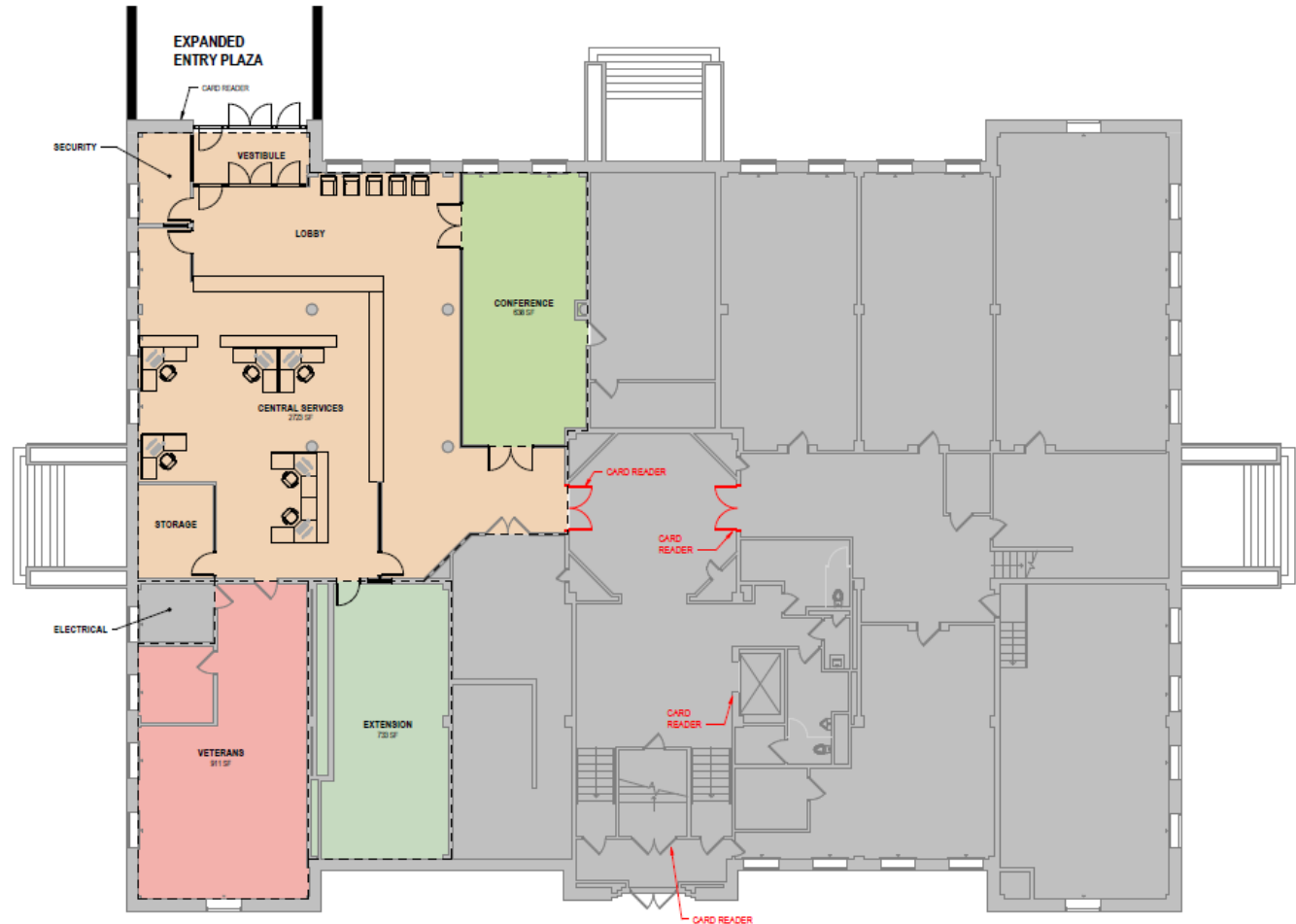


Government Center Space & Security Study

- Entire process and study was discussed and presented on 07.19.2022.
[CLICK HERE](#) for those meeting materials.
- Consensus of the board was to bring it back for future discussion with answers to questions. See below.
 - The Red Wing Heritage Preservation Commission would review any exterior changes to the building that require a building permit.
 - Per city staff – minor changes to the existing ground level access would be the best solution. The second best option would be the south entrance from the alley. (this would affect existing staircase) A ramp on either the west or the east side of the building would have the most impact to the main façade of the building.

Government Center: Seeking Direction

- Is the Board interested in the central services concept in the lower level?





Government Center: Seeking Direction

Option 1

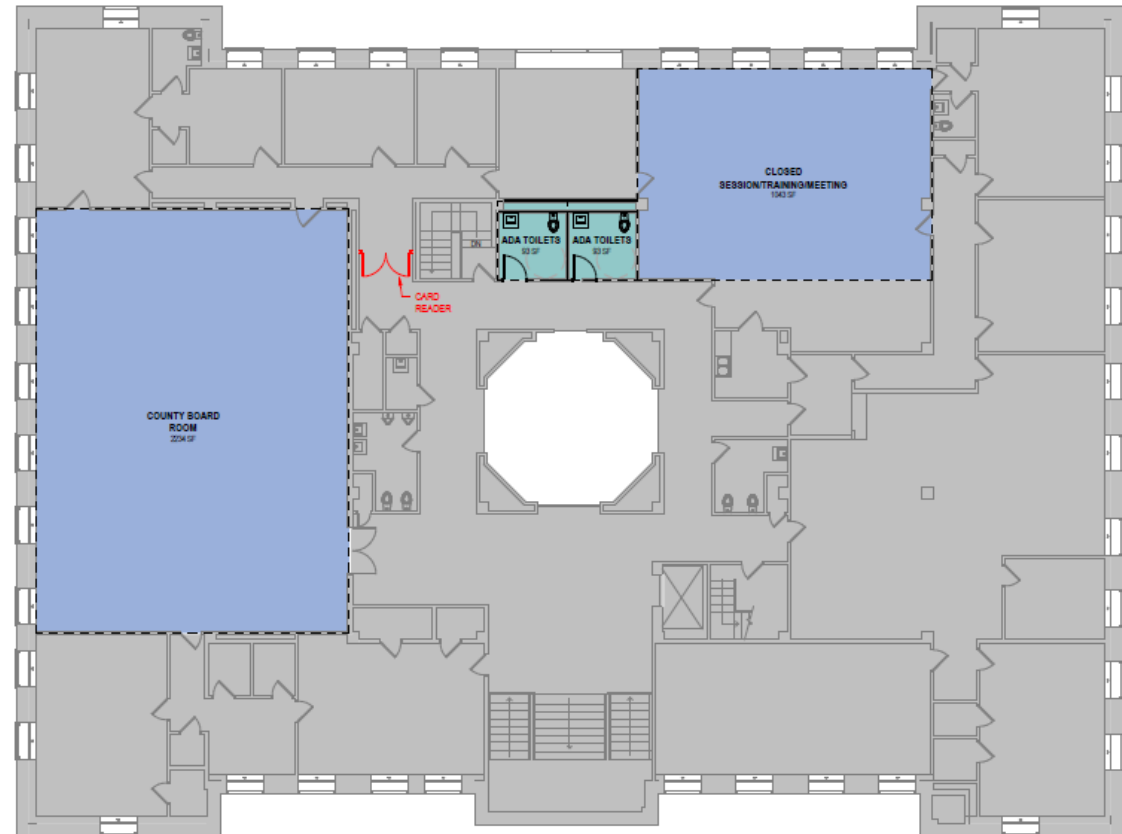
- Implementation of security recommendations for entry control – including only point of entry the lower level.

Option 2

- Implementation of only internal security entry control points and unlock all exterior doors. East, West and 5th street entrances.

Government Center: Seeking Direction

- Is the Board interested in proceeding with the ADA restrooms on the 3rd floor?





Government Center

- Seeking Direction on the following items:
 - Is the County Board interested in the central services concept in the lower level that implements security recommendations for entry control to the building or is the Board interested in implementation of only internal security entry control points and unlock all exterior doors. East, West and 5th street entrances.
 - Is the County Board interested in proceeding with the ADA restrooms on the 3rd floor?



Law Enforcement Center (LEC) Space & Security

- Recommendations made include additional staff restrooms, locker rooms, offices for new positions.
- This study did not include a look at garage or training space.
- City of Red Wing PD lease is set to expire 12.31.2023. The LEC committee will be considering a joint space study with both Goodhue County and the City of Red Wing in 2023 to better understand the future needs of both agencies.



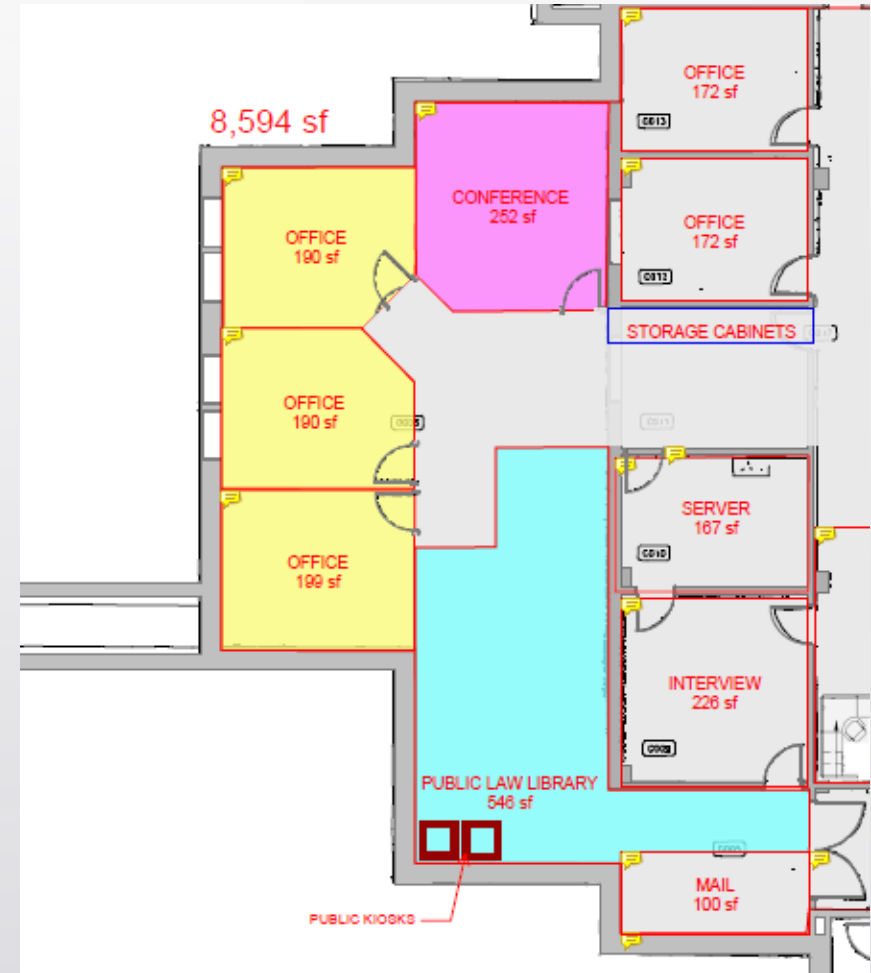
Justice Center Space & Security Study

- Similar process to the Gov't Center and Public Works was followed. Meetings were held with the depts., information gathered and concepts reviewed.
- Meetings were held with the County Attorney's Office & Court Services.
- The review did not include any of the space the State of Minnesota occupies in the facility.

Justice Center Space & Security Study

County Attorney

- Reduce law library space to add three offices and a conference room.
- Implement security recommendations



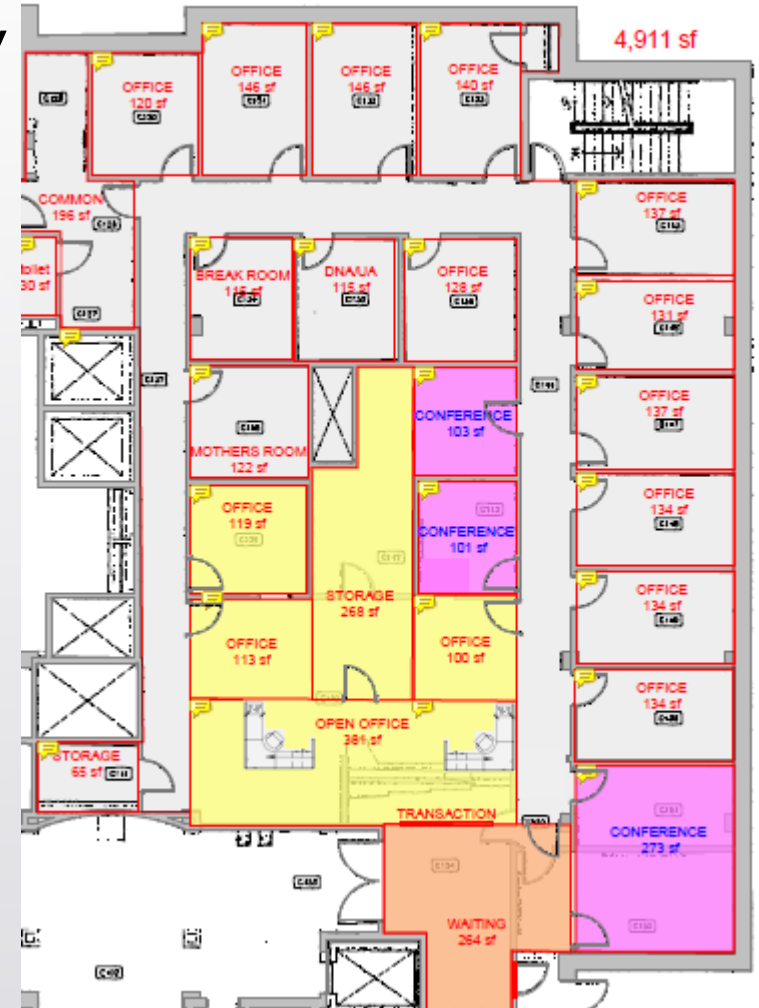
Justice Center Space & Security Study

Court Services

- Reconfigure office space to create 2 offices.
- New Transaction Window
- Enlarge waiting area and front conference room.

All Justice Center Renovations

- 01.10.2022 cost estimate \$624,135.82



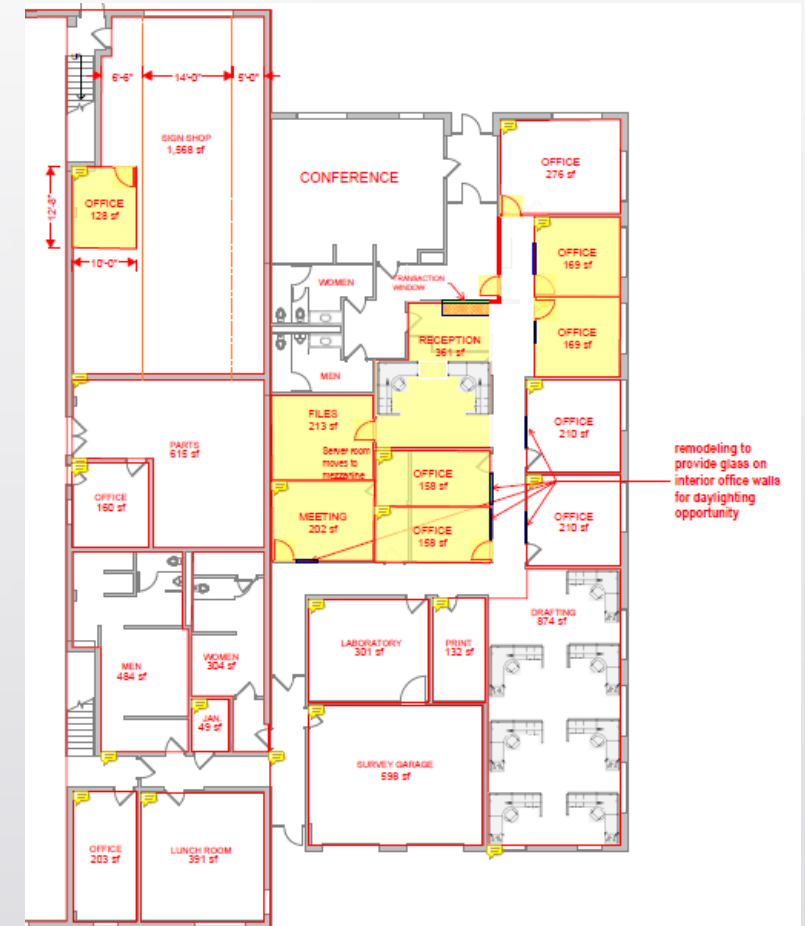


Public Works Space & Security Study

- Similar process to the Gov't Center and Justice Center was followed. Meetings were held with staff, information gathered and concepts reviewed.
- Sheds and storage facilities were not assessed thoroughly the statement was made during information gathering was that truck storage space was adequate.
- Reviewed the following facilities for space and security:
 - Pioneer Road facility
 - Recycling Center

Public Works Space & Security Study

- Provides a secure point of entry with no public access to staffing areas by changing the configuration/location of the front desk.
- Includes the build out of additional offices and meeting space with the ability to add onto the bldg. on the south side.
- 01.10.2022 cost estimate \$187,232.16 (this does not include a cost for an addition).



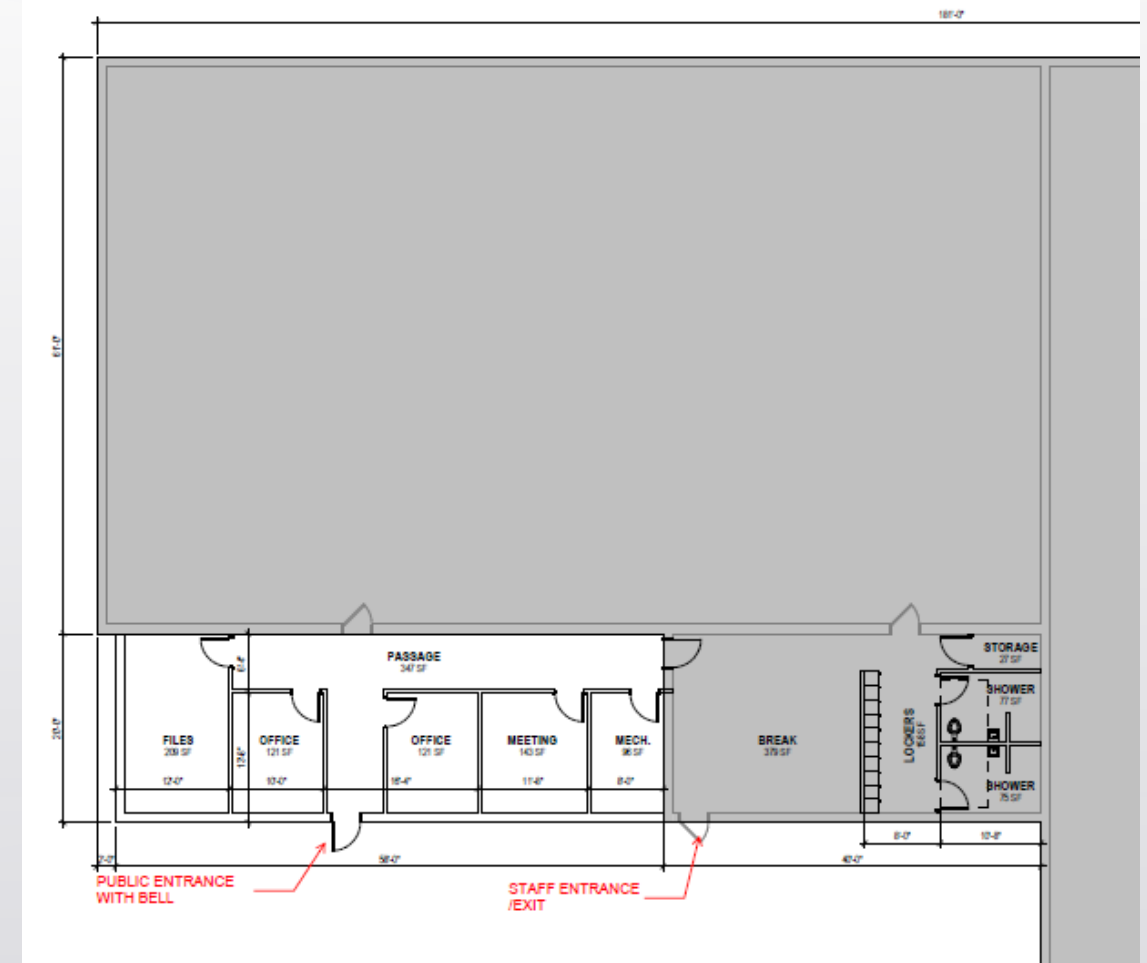
Public Works Space & Security Study

- Shows potential expansion space on the south side of the building
- Shows secure entrances to the property.



Recycling Center Space & Security Study

- Provides a secure point of entry with no public access to staffing areas.
- Includes a 58'x20' addition
 - Two offices, file storage, meeting room and mechanical
- Reconfigure existing 40'x20'
 - Breakroom, locker room, shower/changing rooms
- 01.10.2022 cost estimate \$264,109.62





Moving Forward

- Is the County Board interested in moving forward with implementation of any of the suggested/recommended changes for the Justice Center, Public Works and the Recycling Center?
- Timing of moving forward with future budget cycles.



Greg Isakson, P.E.
Public Works Director/County Engineer
Goodhue County Public Works Department

2140 Pioneer Road
Red Wing, MN 55066
Office (651) 385-3025

TO: Honorable County Commissioners
Scott Arneson, County Administrator

FROM: Greg Isakson, Public Works Director

RE: 04 Oct 22 Committee of the Whole Meeting
Byllesby Park Pavilion and Essential Services Project Update

Date: 28 Sep 22

Staff will present a few pictures showing the progress of the construction of the Pavilion and Essential Service project at this Committee of the Whole.

Byllesby Park
Pavilion & Essential
Services Project
Construction Progress



























Project Funding

GMRPTC Legacy Grant	\$1,350,236.00
Local Grant Match	\$450,079.00
Local Funds from General Fund	<u>\$400,000.00</u>
Total Available Funds	\$2,200,315.00

Project Costs

Design Contract-Locus	\$163,665.00
Additional Structural Engineering	\$1,175.00
Additional Civil Engineering	\$2,000.00
Archaeological Survey	\$5,009.00
Septic System Design	\$15,000.00
Construction Contract-Lift Bridge	\$1,803,360.00
Change Orders	\$10,168.85
Construction Inspection/Testing	\$3,574.50
County Construction: move picnic shelter	\$23,153.00
County Construction: site furnishings	\$19,780.00
County Construction: well work	\$23,563.70
County Construction: septic work	\$27,649.47
County Construction: security system	\$49,907.00
County Construction: landscaping	<u>\$28,941.00</u>
Total Anticipated Cost	\$2,176,946.52