



Goodhue County

Minnesota

COMMITTEE OF THE WHOLE AGENDA

COUNTY BOARD ROOM
GOVERNMENT CENTER
RED WING, MN

SEPTEMBER 5, 2023
9:30 A.M.

Join on your computer, mobile app or room device

[Click here to join the meeting](#)

Meeting ID: 266 673 214 074
Passcode: wknxqK

OR CALL IN
[+1 872-240-8960](tel:+18722408960), 925976225#

PHONE CONFERENCE ID: 925 976 225#

TH 52 PEL Study Presentation.

Documents:

[MnDot Presentation.pdf](#)



US 52 PEL Study Goodhue County Board

SP 2506-86 MnDOT District 6

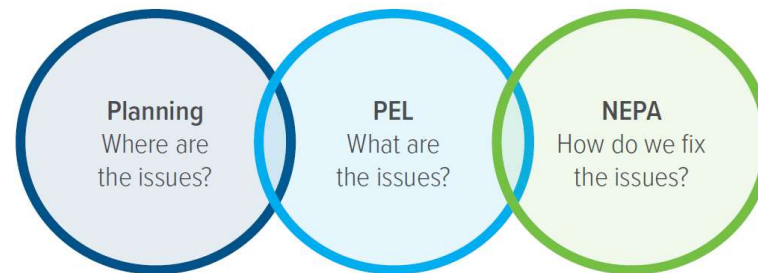
September 5, 2023

Project Area



Study Process

Prepare a comprehensive Purpose and Need Statement, Identify and Evaluate/Screen Alternatives, Develop Vision and Implementation Plan that receives FHWA support and paves the way for the subsequent NEPA process.

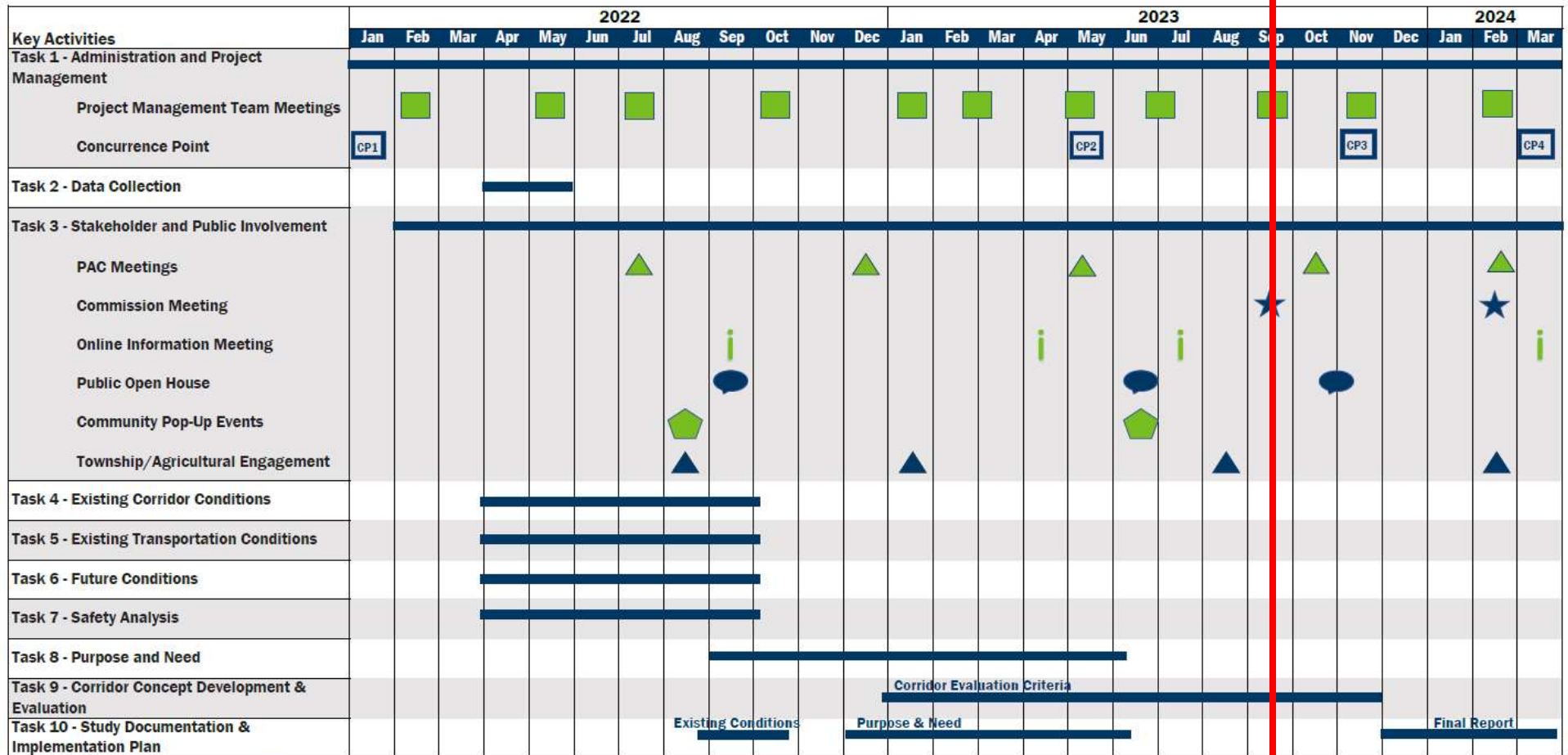


Concurrence Points



Study Schedule

We are here



- CP# Concurrence Points
- ★ Commission Meetings
- Public Open House
- ▲ Township/Agricultural Engagement
- ▲ PAC Meetings
- i
- Community Pop-up Events

What We've Heard So Far



Improve safety

- Better and safer crossings on the highway
- Acceleration/deceleration lanes to enter and exit the highway



Manage access and congestion

- Interest in adding a frontage road as access points are closed
- Understanding that Hwy 52 will “grow up” over time



Agricultural needs

- Hwy 52 is important, but it is a divider. There are limited solutions for those who have to work on/around it
- Want to prioritize farmers and the feeling of “country” amidst growth



Vision for the future

- Grade-separated highway
- Continued growth in the Cannon Falls to Zumbrota area
- Better access across Hwy 52 and on/off Hwy 52 for farmers

Access Development



Do nothing
Lowest cost
No safety improvement



Right-in right-out
Low cost
Reduces access
Safety improvement



3/4 Access intersection
Low cost
Reduces access
Safety improvement



J-turn
Medium cost
Maintains all access
Safety improvement



High T intersection
Medium-high cost
Reduces access
Safety improvement



Full access interchange
High cost
Interchange maintains all access
Overpass reduces access
Safety improvement

Alternatives Development

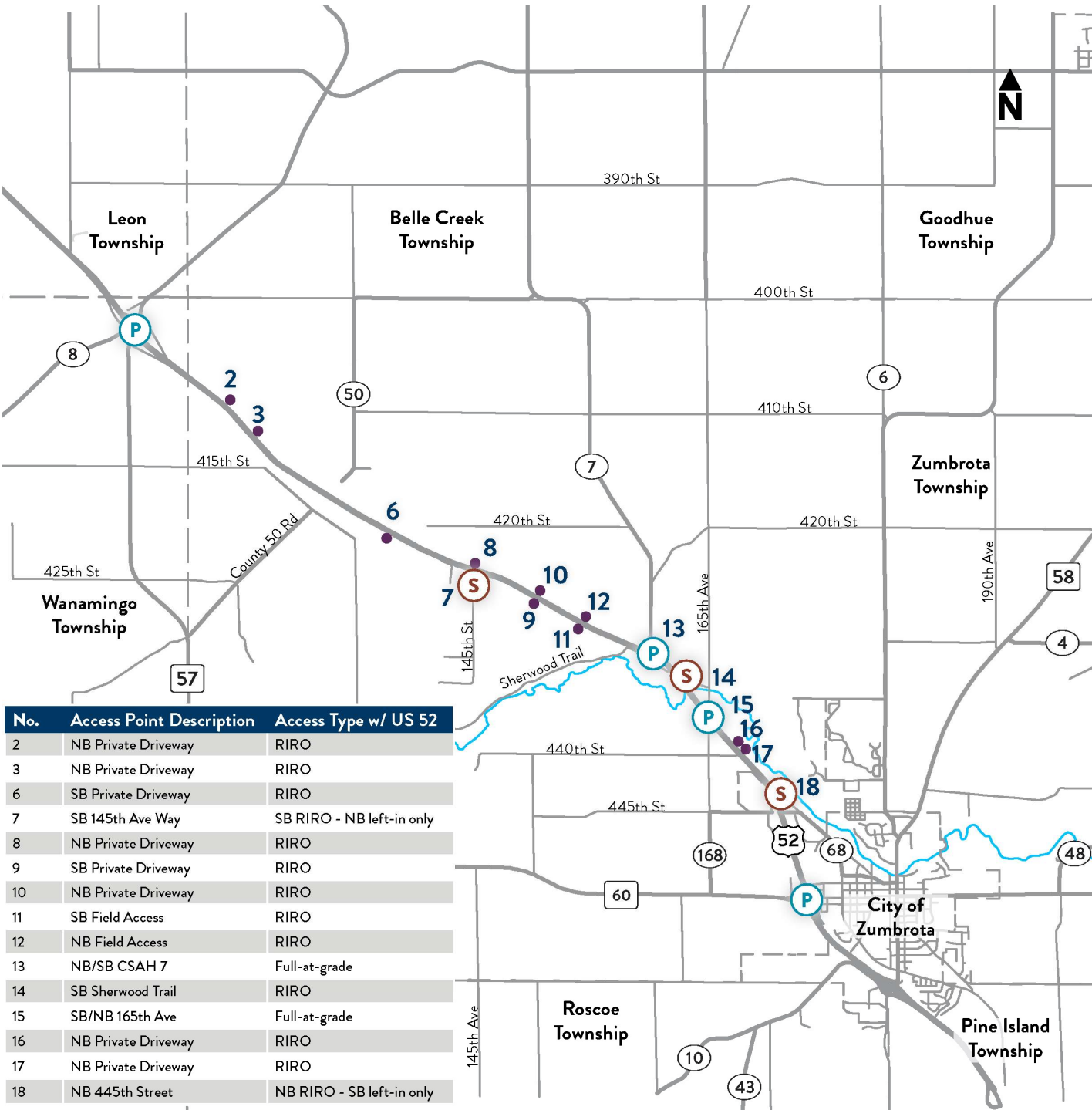
- Do nothing - US 52 southbound completed and no more.
- Modify Access - restrict access - eliminate left turning movements - add J turns.
- Grade Separation - interchanges and overpasses/underpasses.

US 52 PEL Study Zumbrota to Hader

No Build Alternative

Legend

- Municipalities
- Private Drive / Field Access
- P Primary Intersection
- S Secondary Intersection



No.	Access Point Description	Access Type w/ US 52
2	NB Private Driveway	RIRO
3	NB Private Driveway	RIRO
6	SB Private Driveway	RIRO
7	SB 145th Ave Way	SB RIRO - NB left-in only
8	NB Private Driveway	RIRO
9	SB Private Driveway	RIRO
10	NB Private Driveway	RIRO
11	SB Field Access	RIRO
12	NB Field Access	RIRO
13	NB/SB CSAH 7	Full-at-grade
14	SB Sherwood Trail	RIRO
15	SB/NB 165th Ave	Full-at-grade
16	NB Private Driveway	RIRO
17	NB Private Driveway	RIRO
18	NB 445th Street	NB RIRO - SB left-in only



US 52 PEL Study Zumbrota to Hader

Alternative 1

Legend

- High T
- Interchange
- River Bridge
- Right in Right Out
- J-Turn
- 3/4 Access
- Overpass
- Primary Intersection
- Secondary Intersection
- Existing Access to Remain
- Access Closure
- Future Frontage Road
- Future County Road
- Future Township Road

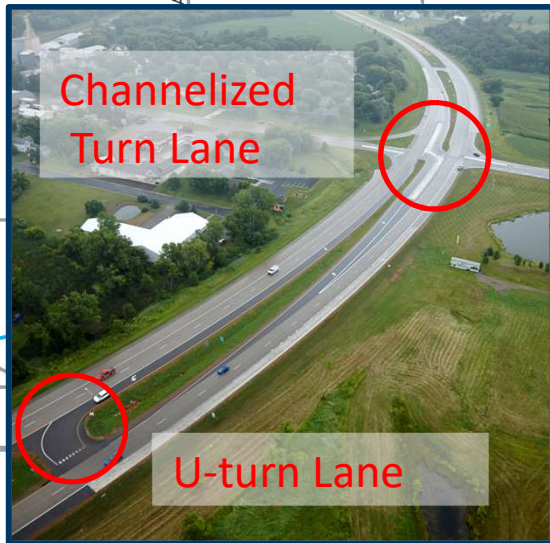


US 52 PEL Study Zumbrota to Hader

Alternative 1

Legend

- High T
- Interchange
- River Bridge
- Right in Right Out
- J-Turn
- 3/4 Access
- Overpass
- Primary Intersection
- Secondary Intersection
- Existing Access to Remain
- Access Closure
- Future Frontage Road
- Future County Road
- Future Township Road

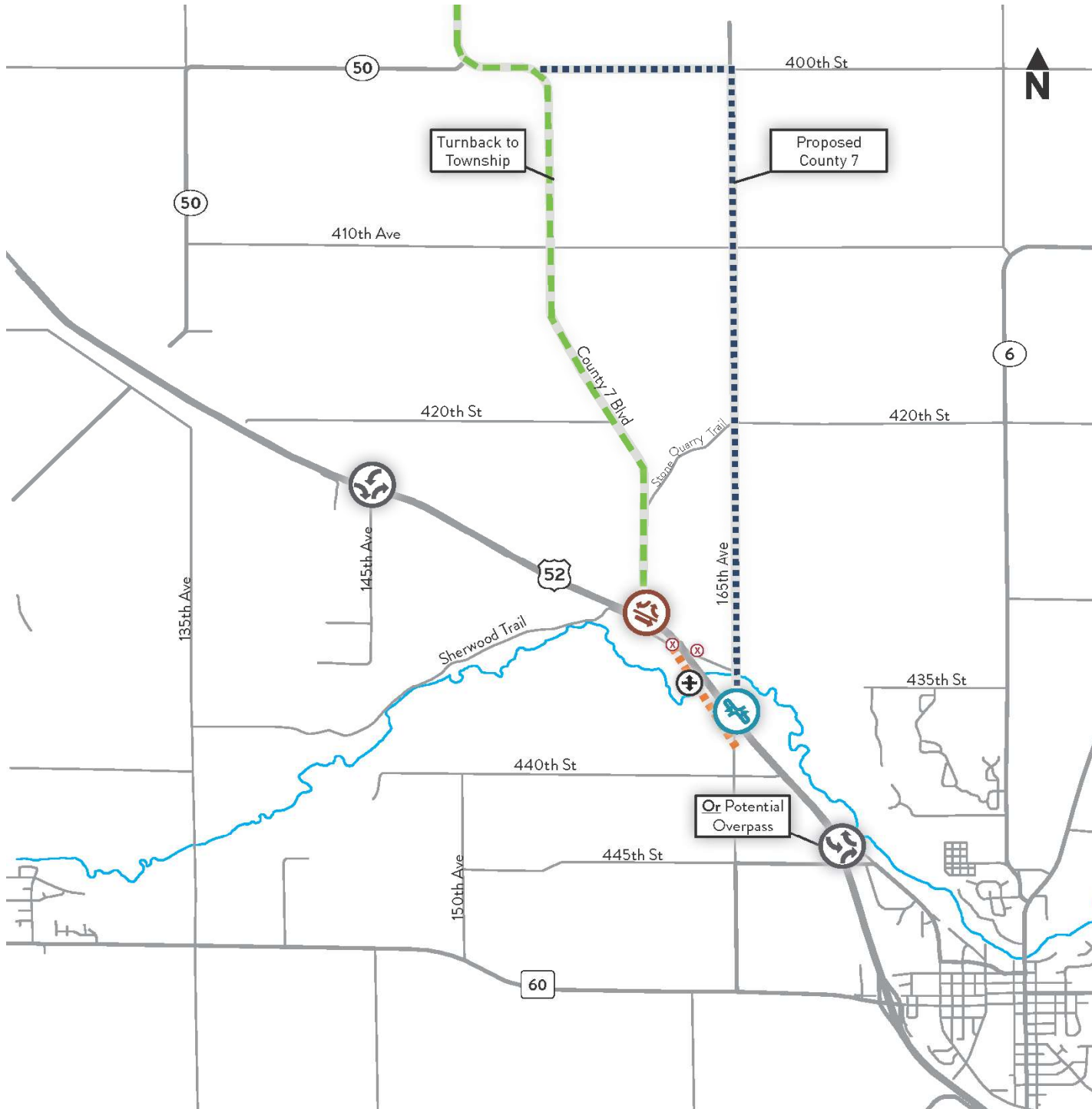


US 52 PEL Study Zumbrota to Hader

Alternative 2

Legend

- High T
- Interchange
- River Bridge
- Right in Right Out
- J-Turn
- 3/4 Access
- Overpass
- Primary Intersection
- Secondary Intersection
- Existing Access to Remain
- Access Closure
- Future Frontage Road
- Future County Road
- Future Township Road

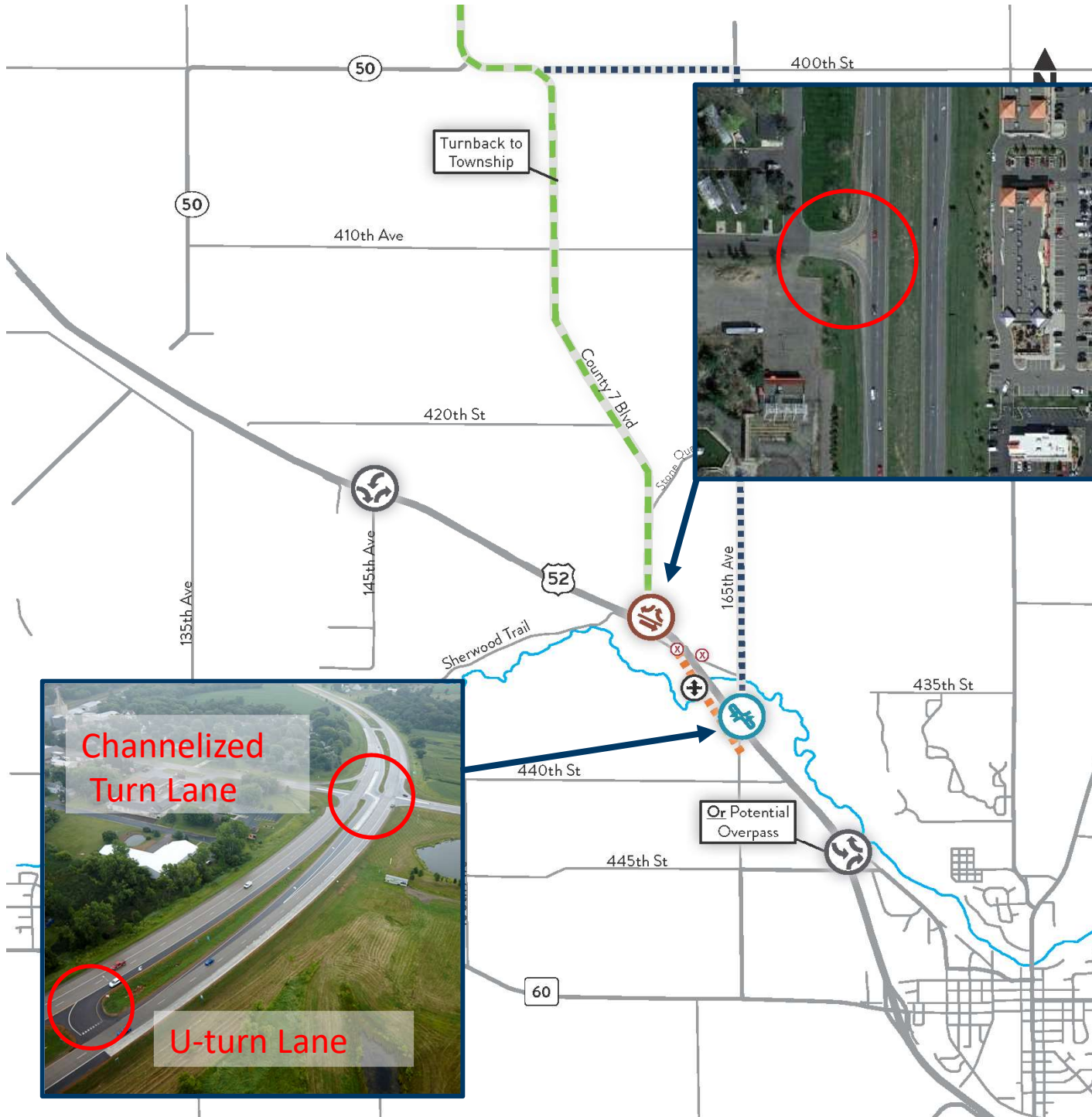


US 52 PEL Study Zumbrota to Hader

Alternative 2

Legend

- High T
- Interchange
- River Bridge
- Right in Right Out
- J-Turn
- 3/4 Access
- Overpass
- Primary Intersection
- Secondary Intersection
- Existing Access to Remain
- Access Closure
- Future Frontage Road
- Future County Road
- Future Township Road



US 52 PEL Study Zumbrota to Hader

Alternative 3

Legend

-  High T
-  Interchange
-  River Bridge
-  Right in Right Out
-  J-Turn
-  3/4 Access
-  Overpass
-  Primary Intersection
-  Secondary Intersection
-  Existing Access to Remain
-  Access Closure
-  Future Frontage Road
-  Future County Road
-  Future Township Road



US 52 PEL Study Zumbrota to Hader

Alternative 3

Legend

-  High T
-  Interchange
-  River Bridge
-  Right in Right Out
-  J-Turn
-  3/4 Access
-  Overpass
-  Primary Intersection
-  Secondary Intersection
-  Existing Access to Remain
-  Access Closure
-  Future Frontage Road
-  Future County Road
-  Future Township Road



US 52 PEL Study Zumbrota to Hader

Alternative 4

Legend

- High T
- Interchange
- River Bridge
- Right in Right Out
- J-Turn
- 3/4 Access
- Overpass
- Primary Intersection
- Secondary Intersection
- Existing Access to Remain
- Access Closure
- Future Frontage Road
- Future County Road
- Future Township Road



US 52 PEL Study
Zumbrota to Hader

Alternative 4

Legend

-  High T
-  Interchange
-  River Bridge
-  Right in Right Out
-  J-Turn
-  3/4 Access
-  Overpass
-  Primary Intersection
-  Secondary Intersection
-  Existing Access to Remain
-  Access Closure
-  Future Frontage Road
-  Future County Road
-  Future Township Road



US 52 PEL Study Zumbrota to Hader

Alternative 5

Legend

- High T
- Interchange
- River Bridge
- Right in Right Out
- J-Turn
- 3/4 Access
- Overpass
- Primary Intersection
- Secondary Intersection
- Existing Access to Remain
- Access Closure
- Future Frontage Road
- Future County Road
- Future Township Road



US 52 PEL Study
Zumbrota to Hader

Alternative 5

Legend

-  High T
-  Interchange
-  River Bridge
-  Right in Right Out
-  J-Turn
-  3/4 Access
-  Overpass
-  Primary Intersection
-  Secondary Intersection
-  Existing Access to Remain
-  Access Closure
-  Future Frontage Road
-  Future County Road
-  Future Township Road



US 52 PEL Study
Zumbrota to Hader

Alternative 6

Legend

-  High T
-  Interchange
-  River Bridge
-  Right in Right Out
-  J-Turn
-  3/4 Access
-  Overpass
-  Primary Intersection
-  Secondary Intersection
-  Existing Access to Remain
-  Access Closure
-  Future Frontage Road
-  Future County Road
-  Future Township Road

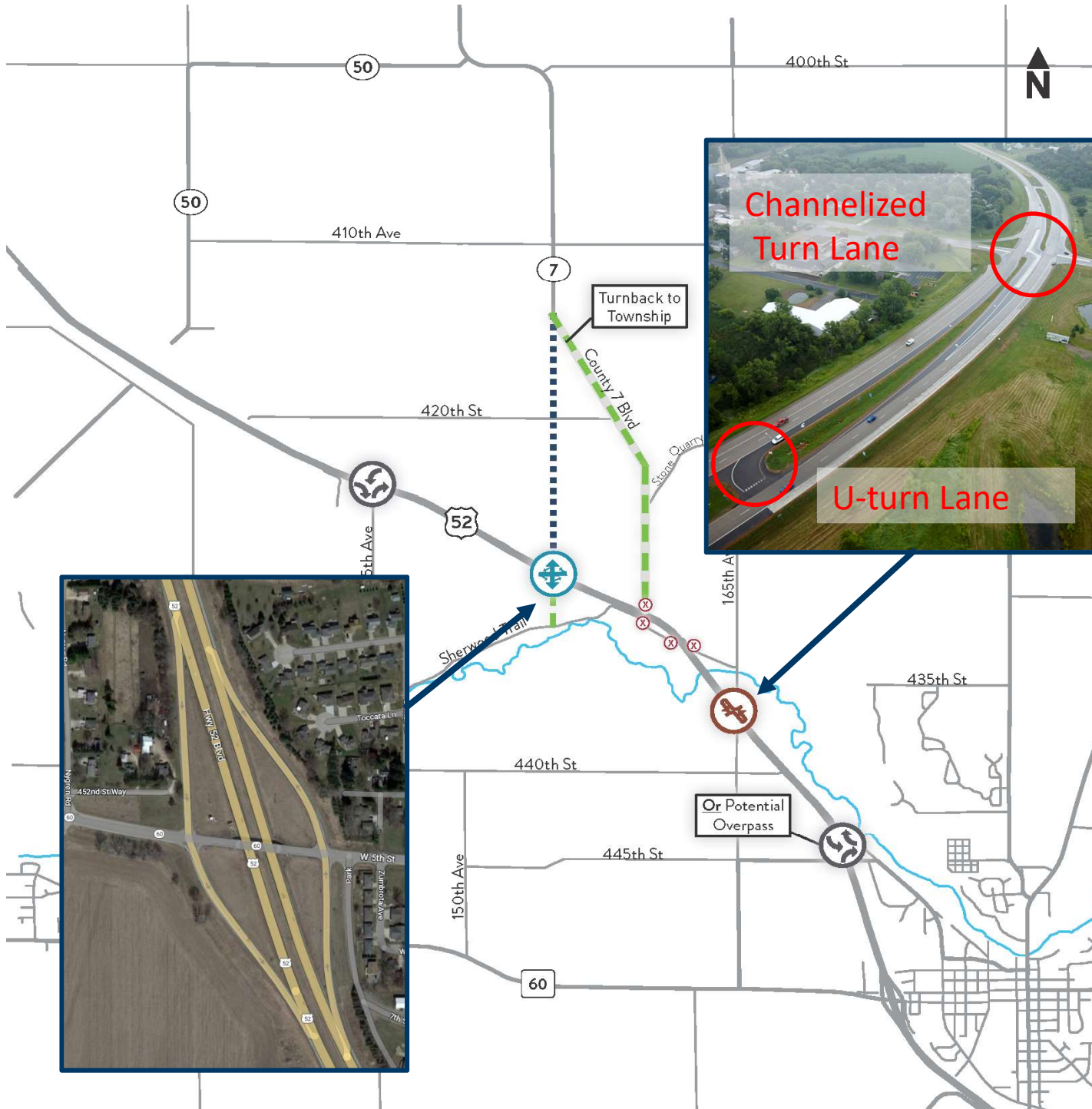
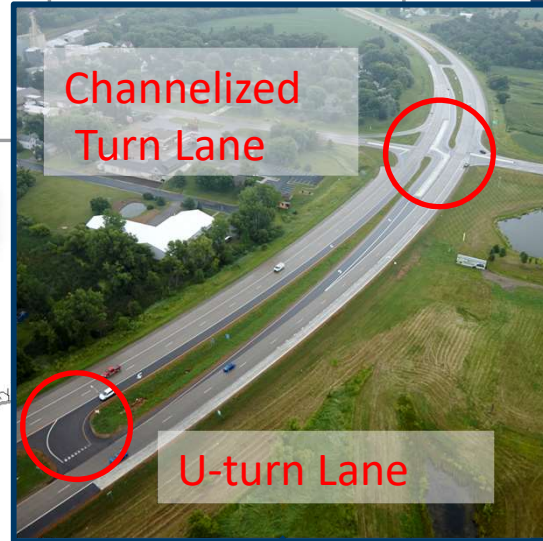


US 52 PEL Study
Zumbrota to Hader

Alternative 6

Legend

-  High T
-  Interchange
-  River Bridge
-  Right in Right Out
-  J-Turn
-  3/4 Access
-  Overpass
-  Primary Intersection
-  Secondary Intersection
-  Existing Access to Remain
-  Access Closure
-  Future Frontage Road
-  Future County Road
-  Future Township Road



US 52 PEL Study
Zumbrota to Hader

Alternative 7

Legend

-  High T
-  Interchange
-  River Bridge
-  Right in Right Out
-  J-Turn
-  3/4 Access
-  Overpass
-  Primary Intersection
-  Secondary Intersection
-  Existing Access to Remain
-  Access Closure
-  Future Frontage Road
-  Future County Road
-  Future Township Road



US 52 PEL Study
Zumbrota to Hader

Alternative 7

Legend

-  High T
-  Interchange
-  River Bridge
-  Right in Right Out
-  J-Turn
-  3/4 Access
-  Overpass
-  Primary Intersection
-  Secondary Intersection
-  Existing Access to Remain
-  Access Closure
-  Future Frontage Road
-  Future County Road
-  Future Township Road



US 52 PEL Study Zumbrota to Hader

Alternative 8

Legend

- High T
- Interchange
- River Bridge
- Right in Right Out
- J-Turn
- 3/4 Access
- Overpass
- Primary Intersection
- Secondary Intersection
- Existing Access to Remain
- Access Closure
- Future Frontage Road
- Future County Road
- Future Township Road

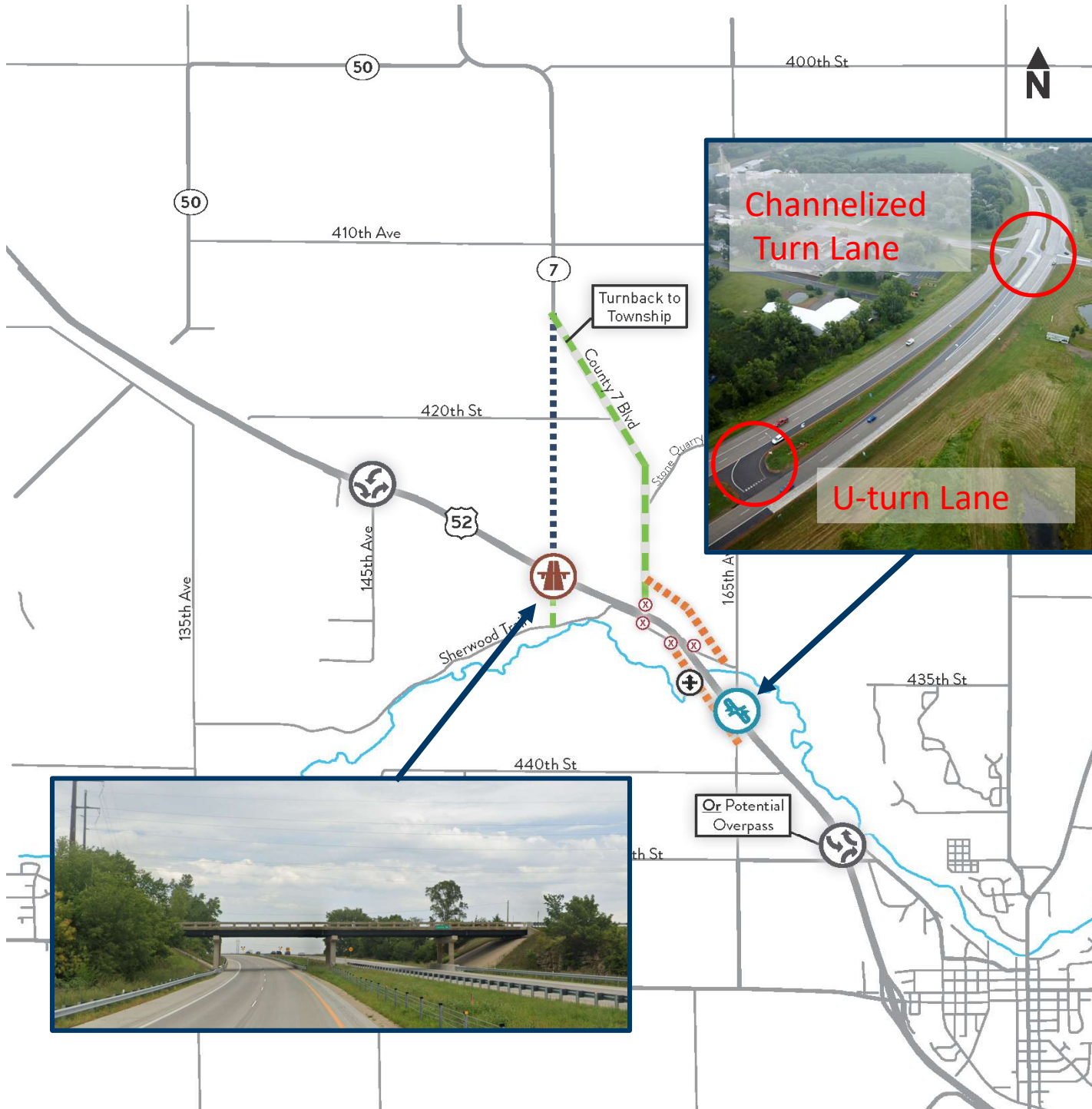
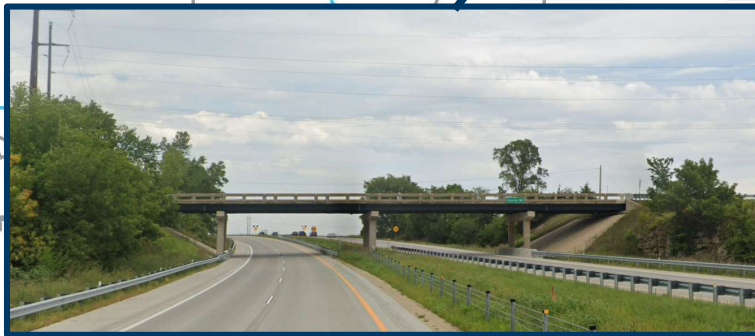
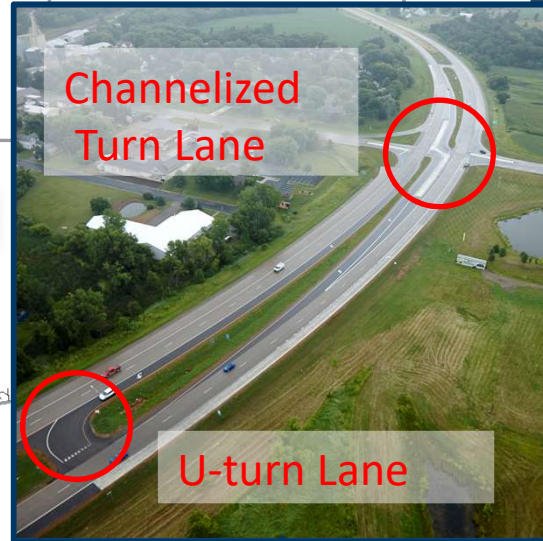


US 52 PEL Study Zumbrota to Hader

Alternative 8

Legend

- High T
- Interchange
- River Bridge
- Right in Right Out
- J-Turn
- 3/4 Access
- Overpass
- Primary Intersection
- Secondary Intersection
- Existing Access to Remain
- Access Closure
- Future Frontage Road
- Future County Road
- Future Township Road



Corridor Wide Alternatives

Widened Shoulders



AASHTO Strategic Highway Safety Plan

Accel/Decel Lanes



Hwy 5 and 101 in Chanhassen, MN

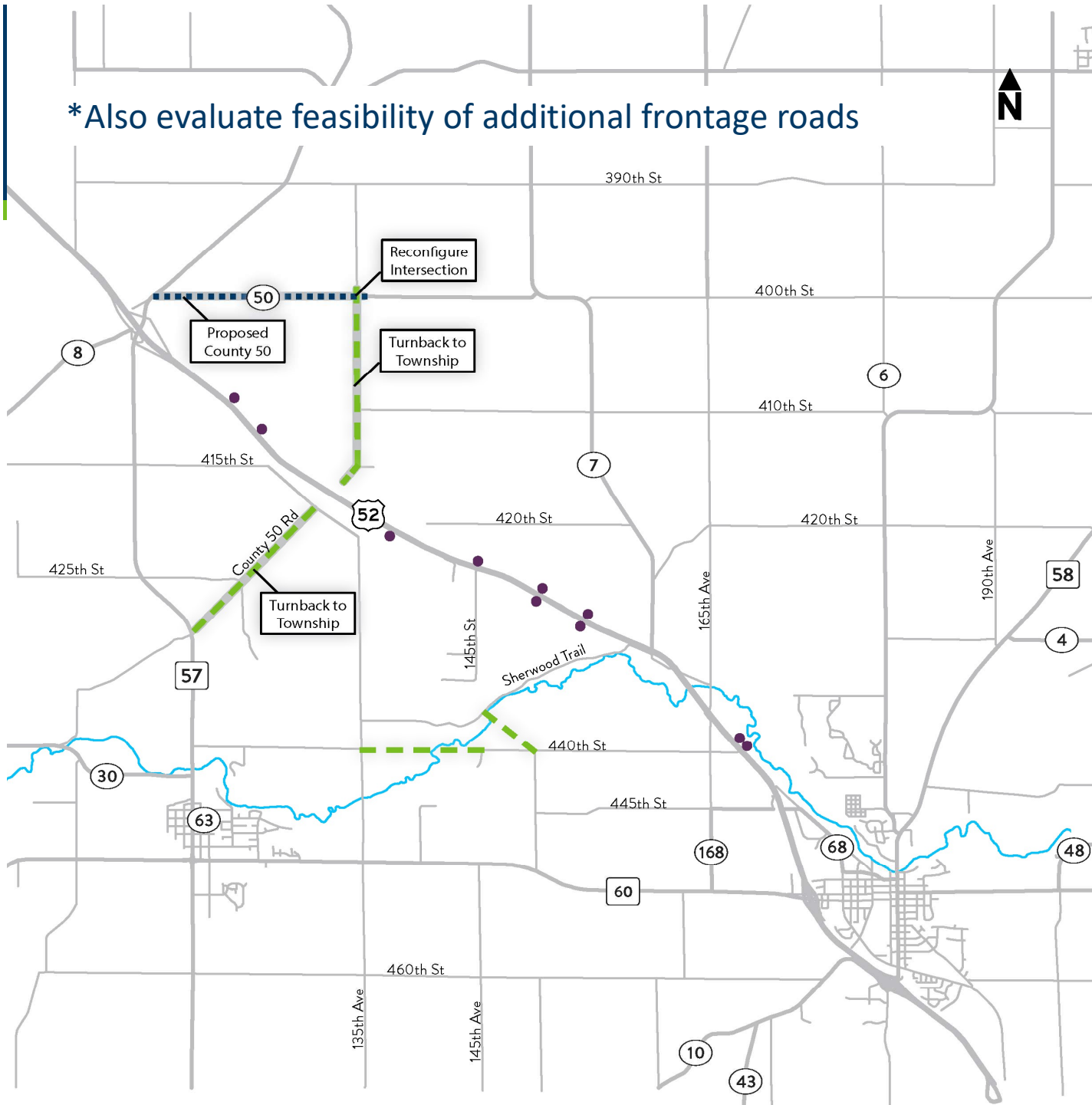
Local Road Alternatives

Legend

- Future County Road
- Future Township Road
- Private Drive / Field Access



*Also evaluate feasibility of additional frontage roads



Next Steps

- Alternatives Evaluation – Summer 2023
- Next Public Open House – Fall/Winter 2023
- Final Study Wrap up – Early 2024

How to Stay Involved

- Visit the Study Website

<https://talk.dot.state.mn.us/hwy-52-hader-zumbrota-study>

- Contact:

Cindy Morgan

Public Engagement Coordinator

Cindy.Morgan@state.mn.us

507-286-7635

Tom Austin

Project Manager

Tom.Austin@state.mn.us

507-286-7559