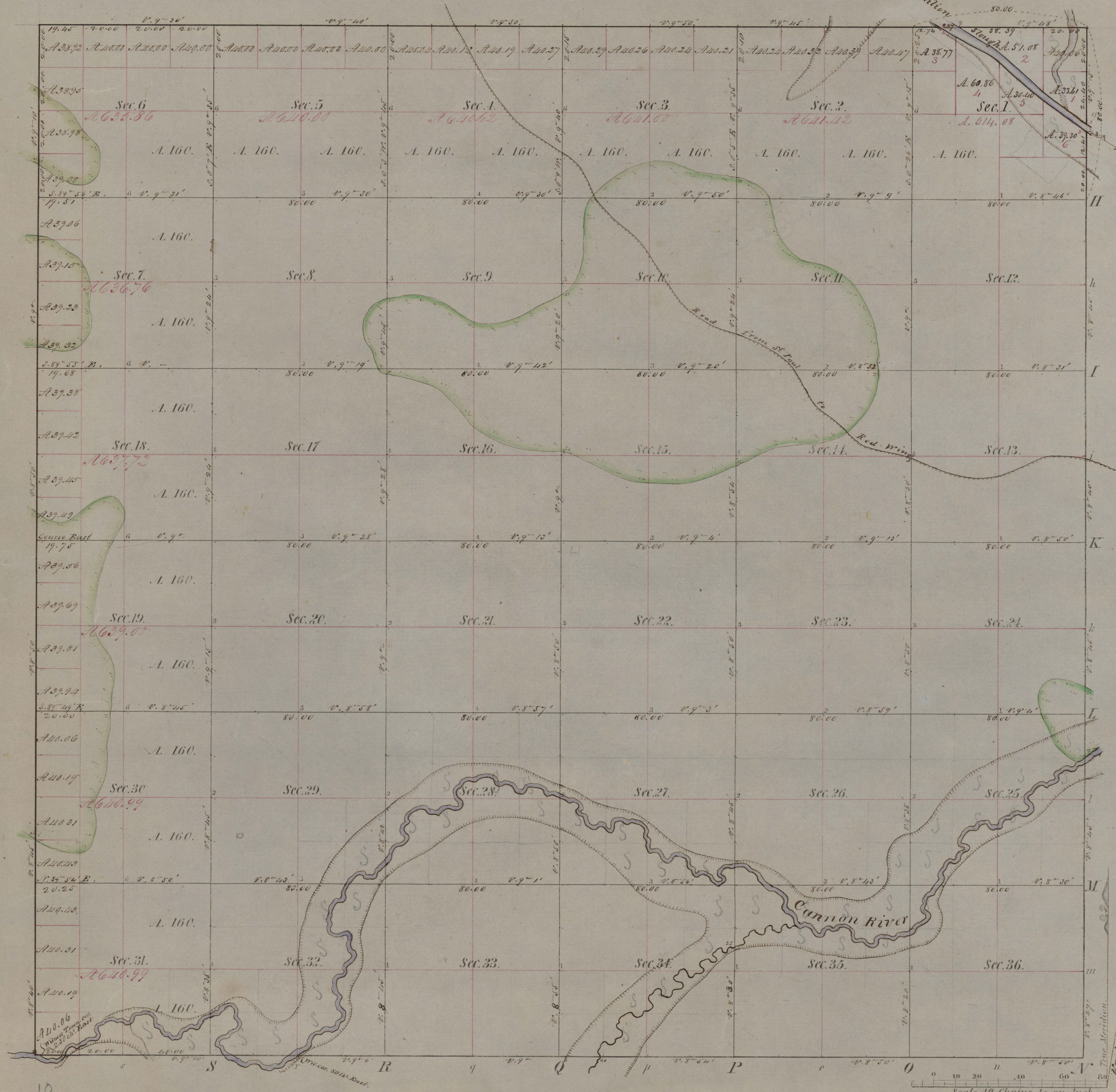


Township N^o 113 N: Range N^o 16 West, 5th Mer.

105



Meanders of Vermilion Slough			
Posts	Courses	Ch ^s	Lk ^s
Left bank down stream			
1	N. 55° W.	25.00	
2	S. 49° W.	29.00	
3	S. 59° W.	19.60	
Right bank up stream			
4	N. 54° W.	30.00	
5	N. 50° W.	25.00	
6	N. 62° W.	17.00	
7	N. 60° W.	10.20	
Total			
M ^s	Ch ^s	Lk ^s	
1	76	80	

Total number of Acres 23, 078. 44

Surveys Designated	By Whom Surveyed	Date of Contract	Amount of Surveys	When Surveyed	When p ^d for and ch ^d in the Sur ^r Gen ^l 's acc ^t
E. W. & N. Township lines	E. A. Davis	Nov. 1 st 1852	17, 79. 1 ¹ / ₂	November 1852	
Subdivisions	Thomas Simpson	Nov. 8 th 1852	61, 76. 49	Decr 1852	
S. Township line	E. A. Davis	June 2 ^d 1853	6. 00. 00	October 1853	

The above Map of Township N^o 113 North, of Range N^o 16 West, of the 5th Principal Meridian, Minnesota is strictly conformable to the field notes of the survey thereof on file in this Office, which have been examined and approved.

Surveyor General's Office,
Duluth, April 18th 1854

Wm. Lewis
Sur^r Gen^l