



GOODHUE COUNTY MINNESOTA

TO EFFECTIVELY PROMOTE THE SAFETY, HEALTH, AND WELL-BEING OF OUR RESIDENTS

Goodhue County Board of Adjustment
Government Center- Board Room
509 West 5th St, Red Wing MN 55066

MEETING CANCELED

1. Notice Of Cancellation

Documents:

[AGENDA_JULY2018BOA.PDF](#)

Anyone interested is invited to attend. Agenda items may be subject to change.

Goodhue County Land Use Management

♦ Goodhue County Government Center ♦ 509 West Fifth Street ♦ Red Wing ♦ Minnesota ♦ 55066 ♦
♦ Building ♦ Planning ♦ Zoning ♦ Telephone: 651/385-3104 ♦ Fax: 651/385-3106 ♦

Goodhue County Land Use Management

Goodhue County Government Center | 509 West Fifth Street | Red Wing, Minnesota 55066

Lisa M. Hanni, L.S. Director

Building | Planning | Zoning
Telephone: 651.385.3104
Fax: 651.385.3106

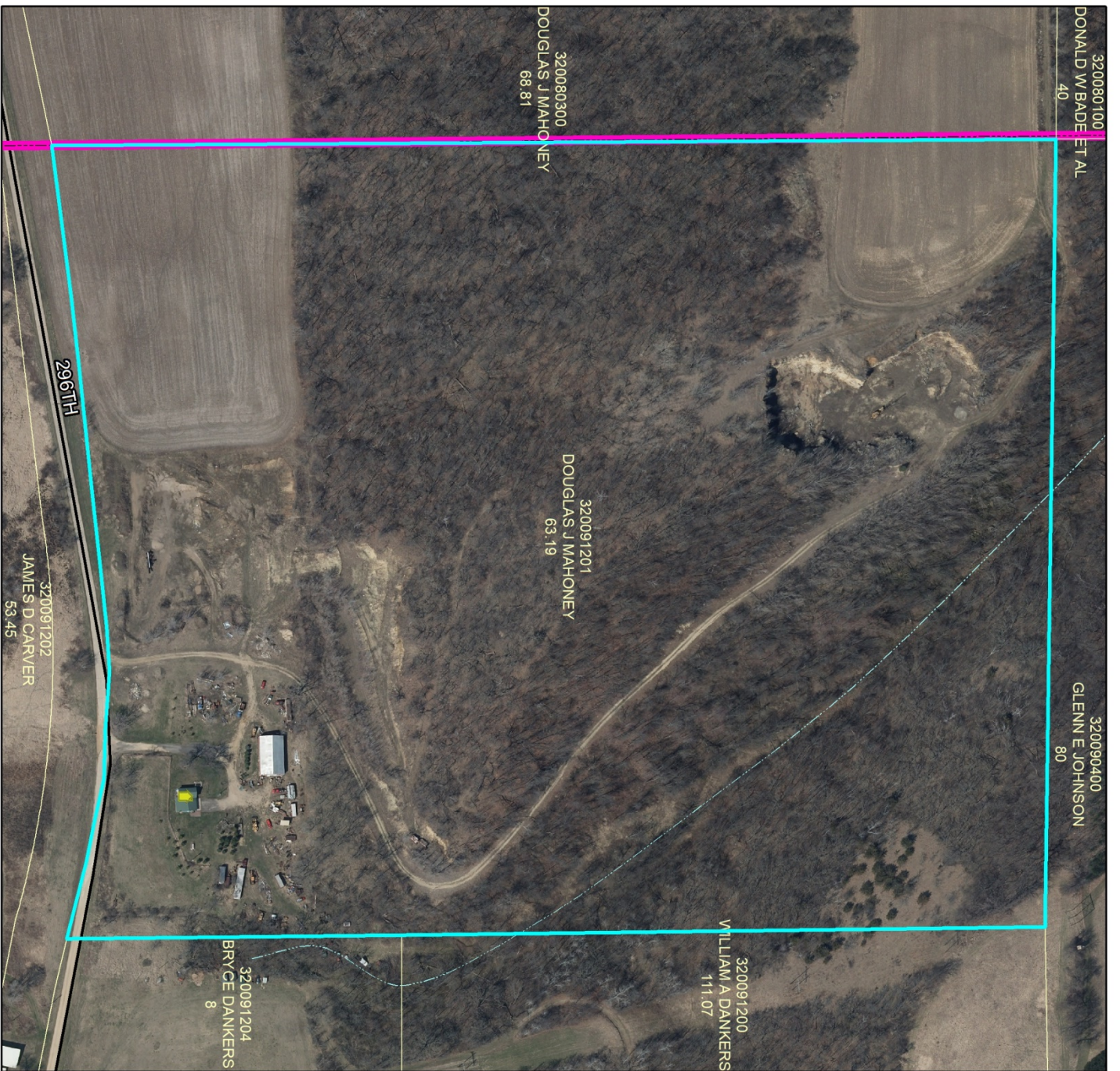


County Surveyor / Recorder

Environmental Health | Land Surveying | GIS
Telephone: 651.385.3223
Fax: 651.385.3098

NOTICE OF CANCELLATION

The Monday, July 23, 2018 meeting of the Goodhue County Board of Adjustment has been CANCELED due to a lack of agenda items.



Board of Adjustment

Public Hearing
May 21, 2018

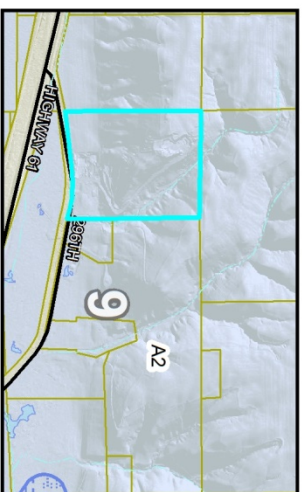
Doug Mahoney
32245 296th Street
Red Wing, MN 55066
A2 Zoned District

Parcel 32.009.1201
S 1/2 NW 1/4, N 1/2 SW 1/4,
Sect 09 Twp 112 Range 13
in Florence Township

Request for variance
to mineral extraction restrictions
within Bluff Impact Zones

Legend

Intermittent Streams	Bluff Impact Zones (% slope)
Protected Streams	20
Lakes & Other Water Bodies	30
Shoreland	FEMA Flood Zones
Historic Districts	2% Annual Chance
Parcels	A
Registered Feedlots	AE
Dwellings	AO
Municipalities	X



DATA DISCLAIMER: Goodhue County assumes NO liability for the accuracy or completeness of this map OR responsibility for any associated direct, indirect, or consequential damages that may result from its use or misuse. Goodhue County Copyright 2018.

2016 Aerial Imagery

Map Created May, 2018, Ryan Beechel

